

Dynamics of Deterrence: A Macroeconomic Perspective on Punitive Justice Policy*

Bulent Guler
Indiana University

Amanda Michaud
University of Western Ontario

October 25, 2018

Abstract

We argue that transitional dynamics play a critical role in the evaluation of punitive incarceration reform on crime, inequality and the macroeconomy. Individuals' past choices related to crime and employment under old policies have persistent consequences that limit their future responses to policy changes. Novel cohort evidence is provided in support of this mechanism. A quantitative model of this theory calibrated using restricted administrative data predicts nuanced, non-monotone dynamics of crime and incarceration similar to the U.S. experience following a single permanent increase in punitive incarceration in the 1980s. Increased inequality and declining employment accompany these changes and are borne unequally across generations.

*Contact: amichau9@uwo.ca or bguler@indiana.edu. For help with NACJD data, we thank ICPSR staff Arun Mathur, Brent Phillips, and Daric Thorne. For comments, we thank Toni Braun, Jonathan Eaton, Bruce Fallick, Giovanni Gallipoli John Haltiwanger, Aaron Hedlund, Erik Hurst, Paul Klein, Karen Kopecky, Tatyana Koreshkova, Ricardo Lagos, Rasmus Lentz, Lance Lochner, Luigi Pistaferri, Ned Prescott, Victor Rios-Rull, Guillaume Rocheteau, Peter Rupert, Todd Schoellman, Pedro Silios, Alex Tabarrok, and Mark Wright; as well as seminar participants at Concordia University, Indiana University, UPitt, and the Federal Reserve Banks of Atlanta, Chicago, Cleveland, Kansas City, & St. Louis; and participants at SED 2014, Midwest Macro, and LAEF Real Business CYCLE conference, and Notre-Dame Paella Workshop. Online appendix: https://ammichau.github.io/papers/BGAMcriminals_OnlineAppendix.pdf

1 Introduction

In this paper we argue that understanding the dynamic consequences of policy reform— those changes slowly unfolding in the transitional decades following a policy change— is particularly important for assessing punitive incarceration policy.¹ It is well documented that criminal behavior is very persistent, on average, at the individual level.² One would then expect the deterrent effect of increased use of punitive incarceration would be weak in the short run since the lingering consequences of past choices are hard to reverse even when punishment becomes more severe. A temporary spike in incarceration can then occur amidst inelastic short run behavior. This spike can translate to increased crime in the short-run when inmates are released if an incarceration experience increases future deviance through worsened labor market prospects or accumulated criminal capital. Ultimately, the full deterrent effect is attained as new cohorts free to fully adjust their choices to the new policy replace cohorts born under the old policy and this causes both crime and incarceration fall in tandem.

The evolution of crime and imprisonment in the United States follows a pattern that resembles the dynamics described: a rise and fall in incarceration alongside a delayed monotone fall in crime (Figure 1).³ The main exercise of this paper is to evaluate the quantitative contribution of the mechanism described in the first paragraph to these dynamics. The story of a sharp change in policy uniquely fits this episode. From the late 1970's through 2000 the imprisonment rate expanded four-times over a rate that held relatively stable for almost a century. It is widely accepted that increased use of punitive incarceration stemming from major policy reforms beginning in the 1980s drove this expansion.⁴

To further motivate the plausibility of this mechanism for the U.S. experience we first develop

¹Analysis of the dynamic effects of policy changes given the dynamic nature of individuals' choices to participate in crime, appears little explored in the literature (McCrary (2010) provides a review). The closest related paper, İmrohoroğlu, Merlo, and Rupert (2004), compares property crime in early 1980's to late 1990's assuming full transition to a new steady state after policy change. A large literature estimates dynamic models of criminal behavior, but do not include policy changes.

²As many of half of the individuals released from prison in the U.S. will be reincarcerated within three years (calculated from the Department of Justice: Recidivism of Prisoners Released in 1994 data series.)

³This is a particularly important point given the inference on the relationship between aggregate crime and incarceration featured in policy discourse. For example, from Eisen and Cullen (2016): "Imprisonment and crime are not consistently negatively correlated... This contradicts the commonly held notion that prisons always keep down crime." We provide an explicit model showing the flaw in applying causal interpretation to aggregate series in this way that goes beyond convoluting orthogonal factors.

⁴Neal and Rick (2014) make this argument using the same administrative data as in this paper. See also Blumstein and Beck (1999), Pfaff (2011), and Raphael and Stoll (2009).

a simple model to clearly exposit the mechanism and empirically validate its key assumptions. We present evidence of a “lost cohort” of individuals born in the mid-to-late 1960’s- individuals at the prime crime age of their 20’s in the 1980’s- that have higher rates of prison admission and arrests *throughout their lives* compared to generations before them *and generations following*. This is an important contribution because the criminal justice literature largely attributes the increased average age of criminals to a fundamental shift in the age profile.⁵ We show this is actually only partially a shift in the age profile, as the theory also predicts, and partially a cohort effect. Cohort effects bolster our claim that dynamics hold important welfare considerations for policy design. They imply costs and benefits of blunt reforms are borne unequally across generations.

Next, an over-lapping generations model with rich channels of criminal persistence is developed to research the dynamic consequences of punitive incarceration policy reform. The starting point is a Beckerian model of rational crime in which agents face a pecuniary trade-off between labor market opportunities and crime. We enrich this model with additional elements necessary to replicate joint criminal persistence and labor market outcomes observed in data. The first is human capital, which grows during employment and decays during non-employment, particularly when incarcerated. The second is criminal capital, some of which is set through choices early in life and is further increased during a prison sentence or decreased when abstaining from criminal behavior.⁶ The third is a criminal record that is observable by employers and can limit employment opportunities. These ingredients lead to divergent paths of individuals’ employment and criminal propensities consistent with micro-data: widespread crime amongst the young followed by high recidivism rates and low employment for those caught and incarcerated.

The model is calibrated to match both cross-sectional and aggregate data in order to quantitatively discipline the channels of criminal persistence. Our calibration strategy allows use of an array of high-quality restricted administrative data from different sources. These include administrative surveys (*Survey of Inmates of State Correctional Facilities*); a three year panel of parole officer data on over 12,000 individuals (*Recidivism of Felons on Probation, 1986-1989*); and the wide-scale panel of annual prison censuses (*National Corrections Reporting Program Data*). This strategy is distinct from prior micro-econometric and structural estimations which have typically

⁵This is probably in response to the deteriorating view of age-profiles being remarkably stable across time and space as they had been prior to the end of the 20th century (Steffensmeier, Allan, Harer, and Streifel (1989) and Gottfredson and Hirschi (1990)).

⁶Criminal capital parsimoniously captures “state dependence” in criminal activity based on past crimes controlling for other factors (Nagin and Paternoster (2000)), peer effects in prison found to increase recidivism (Bayer, Hjalmarsson, and Pozen (2009)), and the life-course hypothesis of the direct affect of ageing to reduce crime (Sampson and Laub (1990) and Laub and Sampson (1993)).

used survey data in which ex and future inmates answer questions on their employment and criminal activity. Obvious deficiencies of these data include non-response, incorrect responses, and small samples. By contrast, we use samples many times larger from more reliable administrative data.⁷

Our main quantitative exercise evaluates the contribution of increased use of punitive incarceration to the U.S. prison boom and other outcomes. We simulate in the calibrated model an increase in the probability of incarceration conditional on committing a crime from 2% to 8%, a similar magnitude to the increase in the U.S. from 1980-2000. The incarceration rate for the population increases from 1.7% to 3.2% percent over the first 10 years then declines over the next 40 years towards a new steady-state incarceration rate of 2.0%. Weekly crimes per capita falls sharply by over half in the first five years: from 0.7 to 0.3 due to the increased incapacitation of the most active criminals. After a decade the fall decelerates, gradually approaching 0.20 due to the higher deterrence effect on new-born generations. Furthermore, and in accordance with the data, crime becomes more concentrated among fewer and more persistent career criminals. The success of the theory to parsimoniously match non-targeted movements in the extensive and intensive margin of crime distinguishes it from other proposed theories of crime dynamics such as abortion (extensive only) or lead. Labor markets show interesting non-monotone dynamics. Over the first 10 years of the policy the employment-to-population ratio falls by 1.5%, but subsequently it fully recovers. However, the policy change has large and permanent effects on inequality due to criminal records. The average wage of those with a criminal record falls by 7-8% and their employment falls by 7% and 3% in the short and long-run, respectively.

To the main exercise we add several illustrative experiments and decompositions. First, we examine the role of each channel of persistence in driving our results. We find contemporaneous deterrence is most important, early life choices gain importance in the long run, and the labor market response of firms to those with criminal records is mostly unimportant. Next, we decompose our results into the classic channels of incapacitation and deterrence. Incapacitation is most important for the short-run decline in crime, while deterrence gains importance in the long-run. Still, incapacitation remains quantitatively relevant in the long-run as crime becomes more concentrated among few individuals as a result of the policy change. Finally, we place these predictions in context relative to observed outcomes by simulating alternative scenarios where orthogonal exogenous changes

⁷The National Longitudinal Survey of Youth includes a panel of interviews of a two cohorts of individuals before, during, and after imprisonment. The sample reporting incarceration is less than 200 and these individuals have many non-responses.

in criminal rewards and real wages accompany policy reform. Increased crime rewards improve the model’s fit to incarceration, but provide counterfactual increases in crime and counterfactual increases in the share of the population engaging in crime. We conclude that a combination of these type of other factors alongside policy changes are necessary to understand the evolution of crime and labor markets in the United States since the 1980s, but the non-monotonic transition of incarceration is maintained by the assumption of criminal persistence.

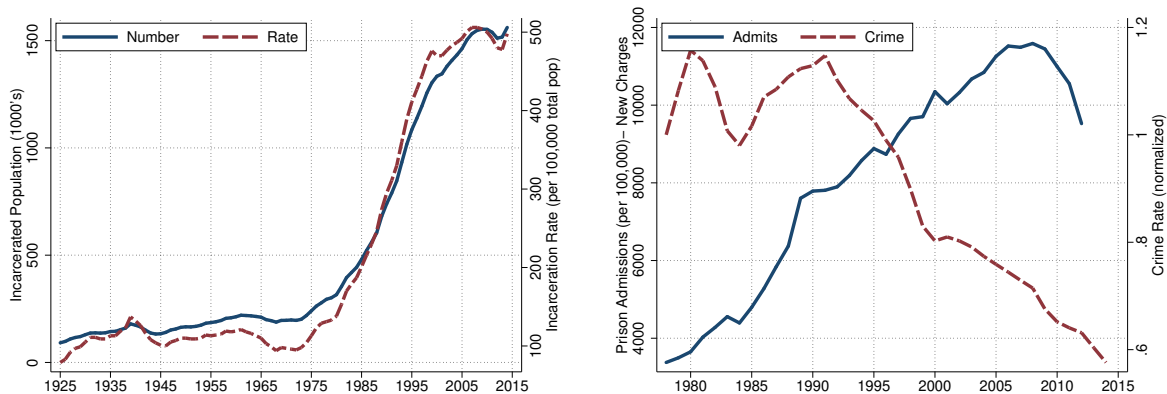


Figure 1: Crime rates from Uniform Crime Reporting Statistics (Federal Bureau of Investigation. (2017)). Incarceration rates 1925-82 from Cahalan and Parsons (Dec 1986) and 1983-2016 from Carson and Mulako-Wangota (2017) and include state and federal prisoners only. Admissions are from the National Prisoner Statistics Program for males in state and federal prisons admitted on new charges only (excludes parole/probation violations, etc.).

Literature. The literature on crime features few structural equilibrium approaches. Engelhardt, Rocheteau, and Rupert (2008) consider how the ability of employers to write efficient contracts tempers the labor market response to crime and vis-a-versa. Huang, Laing, and Wang (2004) and Burdett, Lagos, and Wright (2003) study interactions with the labor market in search frameworks. The most related papers are İmrohoroğlu, Merlo, and Rupert (2004), Fella and Gallipoli (2014) and Engelhardt (2010). İmrohoroğlu, Merlo, and Rupert (2004) quantifies the contributions of changes in apprehension probability, labor markets, and population aging to the decline in property crime.⁸ Fella and Gallipoli (2014) also consider property crime, but evaluate the impact of educational policy as well as punitive policy on crime. Engelhardt (2010) develops a model with rich heterogeneity to match the cross-sectional distribution of who commits property crime. Our work differs because we consider transitional dynamics and all types of crime. We have similar ingredients of many

⁸Similar in spirit, Guner, Rauh, Caucutt, et al. (2017) study the effect of the war on crime on the marriage gap between black and white men.

of these models: pecuniary considerations that differ based upon life-cycle human capital growth and upon employment status; and criminal capital or fixed heterogeneity to account for patterns of crime that pecuniary features alone cannot match within their respective frameworks. As it will be come clear, we place extra care in parsing what components of heterogeneity are decided early and what depend on past criminal or labor market experience as this is important for transition dynamics. The reader should also keep in mind that the fact we target all types of crime causes our quantitative results to differ from the aforementioned papers as well as other structural approaches with similar ingredients that focus on property crime alone.⁹

2 A Simple Model of Criminal Persistence with Empirical Cohort Evidence

In this section, we develop a simple model with two goals: (1) to illustrate the dynamic response to policy changes when criminality is persistent; and (2) to provide empirical evidence consistent with the assumptions and predictions. The model features three key ingredients. First, there is an age-profile for crime. Second, the youth crime decision is decreasing in the probability of imprisonment and has a persistent impact on crime throughout life. Third, a prison experience can increase future criminality. Let $C_{j,t}$ and $I_{j,t}$ be the crime and incarceration rates, respectively, of cohort j at time t . Let the relationship between these variables over time be provided by the following equations.

$$\begin{aligned} \text{Incarceration Rate } I_{j,t} &= \pi_t C_{j,t} \\ \text{Initial Crime Choice } X_{j,0} &= g^X(\pi) \\ \text{Evolution of Crime Rate } C_{j,t} &= X_{j,t} A_a + T_t \\ X_{j,t} &= (\phi + \beta \pi_{t-1}) X_{j,t-1} \end{aligned}$$

The policy variable is π_t : the probability of incarceration conditional on committing a crime. It is exogenous and can change over time. Assuming a large population, the incarceration rate for cohort j at time t is equal to that cohort's crime rate $C_{j,t}$ multiplied by the incarceration probability π_t .

⁹For example [Fu and Wolpin \(2017\)](#). [Lochner \(2004\)](#) considers property and violent crime, but omits drug crime included in this analysis.

The remaining equations explicate an extreme version of the cohort effects found in the full structural model. In the full model, choices made under previous policies persistently affect outcomes even as the policy changes later in life. Here, we model that cohort effect as a persistent component $X_{j,t}$, a function of both an initial crime choice and the policies π_t uniquely experienced by a cohort over its life-cycle.¹⁰ The initial choice is given by a function $g^X(\pi) \in [0, 1]$. We assume this function is twice continuously differentiable in $(0, 1)$ and that $g'^X(\pi) < 0$, ie: that punitive policy deters.

The final two lines show the evolution of a cohort's crime rate. An age profile is provided both by a policy-invariant rate of life-cycle growth or decay (A_a) and by the impact of past crime and incarceration through the coefficient term $(\phi + \beta\pi_{t-1})$.¹¹ The coefficient term $(\phi + \beta\pi_{t-1})$ relating $X_{j,t}$ to $X_{j,t-1}$ has the following interpretation. The term $\phi < 1$ captures the direct effect crime today has on crime tomorrow. The term $\beta\pi_{t-1}$ captures the effect that a prison experience yesterday has on crime today. We assume $\beta > 0$ in which case a prison experience increases future crime or at least slows its decay.¹² Both ϕ and β can be interpreted as some persistent criminal capital either formed by doing crime or going through prison.¹³ The transitory level effect T_t is unrelated to policy will serve as a residual in the estimation.

The first set of predictions of this model, summarized in Proposition 2.1 and Corollary 2.2, explicate that cohort effects can generate a dynamic transition following an increase in π .¹⁴ While the cohort effects are always present, whether or not the transition is non-monotone requires the elasticity of the initial crime choice to be large relative to the change in $\beta\pi$. In other words, the impact of a prison experience on criminal persistence cannot be too large relative to the early life deterrence. A sufficient condition is if crime falls in the new steady state, but this is not necessary. Taken together, Proposition 2.1 and Corollary 2.2 illustrate the importance of dynamics for policy evaluation in two ways. First, it shows that the timing of evaluating outcomes matters. Crime

¹⁰If the policy does not change over time then there are no cohort or time effects.

¹¹This specification using age as a growth rate is key for econometric identification. It is conceptually motivated by the life course and turning point theories in sociology (Elder Jr (1985)) and also motivated by the empirical profiles of crime as shown in detail in the online appendix.

¹²Incarceration reforms can be studied for the case of $\beta < 0$, but as we show it seems empirically unlikely.

¹³This specification fits with the refinements of the life-course theory applied to criminal deviance arguing that past deviance and disadvantage weaken the general life-course decay in deviance (Sampson and Laub (1990) and Laub and Sampson (1993)).

¹⁴The proofs here consider transition dynamics and look at relative quantities of crime, either across generations or across ages for a single cohort. The online appendix presents additional propositions and proofs concerning comparative statics on aggregate crime and incarceration levels with respect to the policy π . They show that crime and incarceration levels can either increase or decrease in response to an increase in π , depending on parameters.

decreases less in the short run than in the new steady state. Incarceration increases more in the short run than in the final steady state. Second, it shows that the costs and benefits of a policy changes are borne differentially across cohorts.

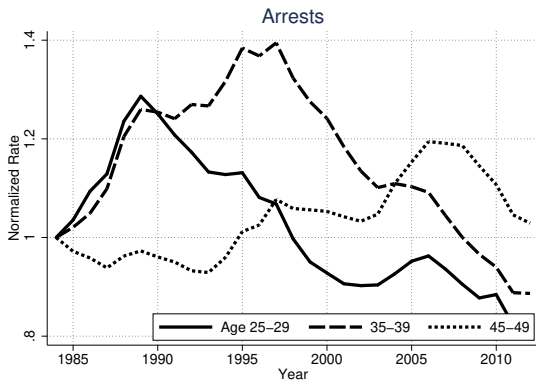
Proposition 2.1 (The cohort born immediately before an increase in π has higher age-specific crime and incarceration rates at all ages than all cohorts it precedes and follows.). *Let an initial π_0 be given. Denote with hat notation the variables related to the cohort born at $\bar{t} - 1$ where \bar{t} is when the policy is changed to $\pi > \pi_0$. Then:*

$$C_{\hat{j},t} > C_{s,t-\hat{j}+s} \quad \forall \quad t > \bar{t} + 1 \quad \text{and} \quad s \neq \bar{t} + 1$$

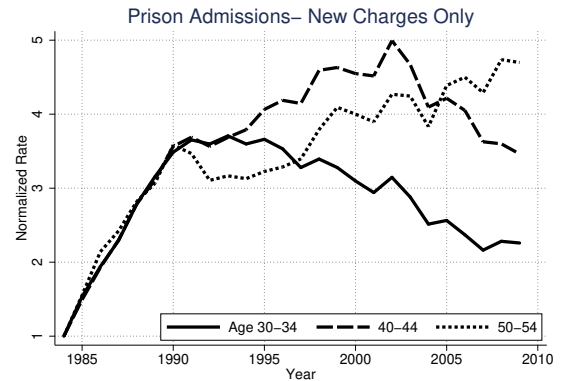
$$I_{\hat{j},t} > I_{s,t-\hat{j}+s} \quad \forall \quad t > \bar{t} \quad \text{and} \quad s \neq \bar{t}$$

Proof. See Online Appendix. □

Empirical trends in age-specific arrest and imprisonment rates are suggestive of cohort effects. Figure 2(a) shows that the peak of the arrest rate for men age 25-29 occurred in the late 1980's, the peak for 35-39 in the late 1990s, and the peak for 45-49 in the late 2000's. In other words, the peak for each age group coincides with the same cohort born in the mid-1960s. Figure 2(b) conveys a similar story for prison admission rates on new charges (not parole/probation violations).



(a) Arrest Rates



(b) Prison Admission Rates (No Prior Imprisonment)

Figure 2: Cohort Evidence Prison admissions from National Corrections Reporting Program Data and restricted to admissions on new charges only. Arrests from FBI crime reports accessed through the Bureau of Justice Statistics

Corollary 2.2 (The transition paths of crime and incarceration after an increase in punitiveness are non-monotone if the elasticity of the initial choice is sufficiently large relative to the effect of prison on criminal persistence.). *Let an initial π_0 be given and consider the economy at a steady state for that π_0 . Assume at time-zero the policy switches permanently and unexpectedly to $\pi_1 > \pi_0$. Then:*

- a) *The transition path for crime is non-monotone iff*

$$\frac{g^x(\pi_0)}{g^x(\pi_1)} > \frac{\sum_{a=0}^{M-1} (\phi + \beta\pi_1)^a + 1}{\sum_{a=0}^{M-1} (\phi + \beta\pi_0)^a + 1}$$

- b) *The transition path for crime is non-monotone iff*

$$\frac{\pi_0 g^x(\pi_0)}{\pi_1 g^x(\pi_1)} > \frac{\sum_{a=0}^{M-1} (\phi + \beta\pi_1)^a + 1}{\sum_{a=0}^{M-1} (\phi + \beta\pi_0)^a + 1}$$

Proof. See Online Appendix. □

The second result from this model is summarized in Proposition 2.3. It states that if a prison experience increases criminal persistence, then the age profile of crime looks different in steady states with different incarceration probabilities π . In particular, as π increases crime is more persistent over the life-cycle resulting in higher incarceration rates for old individuals relative to young.

Proposition 2.3 (If a prison experience increases criminality, then a steady state with a higher incarceration policy exhibits higher crime and incarceration at older ages relative to young). *Let two policies $\hat{\pi} > \pi$ be given and \hat{X}_a and X_a be the persistent component of crime at age a in the steady-state for each policy, respectively. Then:*

$$\frac{\hat{X}_a}{\hat{X}_{a-s}} > \frac{X_a}{X_{a-s}} \quad \forall \quad s \in (1, a)$$

Proof. See Online Appendix. □

The change in the life-cycle profile at the steady state when the policy increases occurs when a prison experience slows the life-cycle decay of crime. While crime decays monotonically over the life-cycle, incarceration is hump-shaped. Applying this model to incarceration it predicts the

peak of life-cycle crime will move to older ages for β sufficiently large. This result is particularly important for how we think about time and age effects in the data. It is consistent with shifts towards deviance at older ages that are shown to be salient in the data as seen in Figure 3. It also suggests that only a portion of this shift is a permanent component interpreted as the effect of changes in policy. Both the permanent shift and the transitory cohort effect from a simulation of the simple model can be seen in Figure 4 as an additional visual check on our propositions.¹⁵

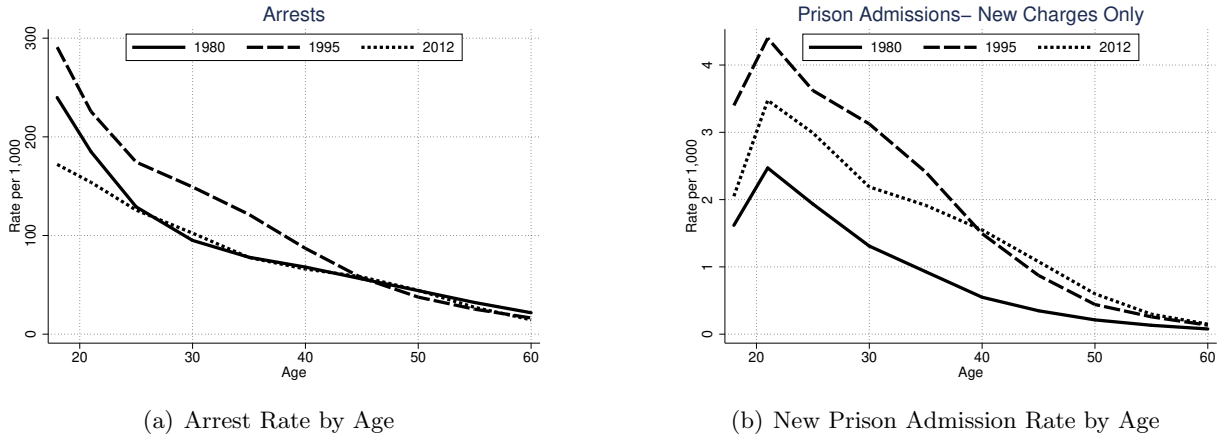


Figure 3: **Permanent and Cohort Shifts in Age Profiles (Data)**:Prison admissions from National Corrections Reporting Program Data and restricted to admissions on new charges only. Arrests from FBI crime reports accessed through the Bureau of Justice Statistics

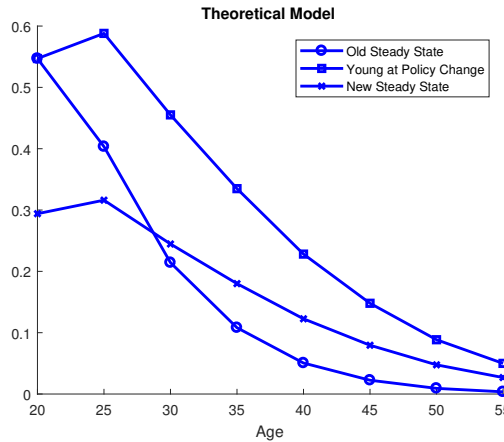


Figure 4: **Permanent and Cohort Shifts in Age Profiles (Simple Model)**

¹⁵The model data are illustrative and for an arbitrary calibration: $\phi = 0.5$, $\beta = 0.9$, $g(\pi) = 1 - e^{-\pi}$, and 8 age groups. We consider a shift from $\pi = 0.1$ to $\pi = 0.4$.

Figure 5 illustrates the point that the inclusion of *both* the persistence of prior choices made under old policies ($X_{j,0} = g^X(\pi)$) and the assumption that incarceration increases (or slows the decay of) future deviance ($\beta > 0$) are critical for providing cohort effects that generate a non-monotonic transition. The baseline features both ingredients. The line “No Early Choice” sets initial crime X_0 as a constant independent of policy π . In this case, crime monotonically increases when policy π increases at time 0. The line “No Prison Persistence” sets the impact of a prison experience on future crime to zero ($\beta = 0$) In this case, crime monotonically decreases when policy π increases at time 0. Incarceration is similar, except both the non-monotonicity and the final steady state levels depend in the elasticity of the crime choice with respect to the policy π . A non-monotone transition and a smaller increase in incarceration (or even a decrease) in the final steady state are more likely when this elasticity is low. This is an important point for multiple reasons. It verifies that in order to replicate cohort features of the data, we need both an early life choice and for prison to affect future criminality. It also strikes at the policy crux of the paper: these are the two mechanisms that make policy evaluation using observed outcomes so different depending on the timing of the evaluation and they create differential costs across cohorts.¹⁶

Evidence of Cohort Effects. Cohort effects are a unique testable prediction of the theory.¹⁷ The results of the simple theoretical model refine the regression approach to separating age, time and cohort effects in the data.¹⁸ Consistent with empirical age profiles, we assume age affects the decay in crime over the life-cycle. However, one must take into consideration the prediction that crime should become more persistent over the life-cycle in response to a permanent increase in the probability of imprisonment for a crime π .¹⁹ Together these effects form the shape of the life-cycle profile and the remainder time and cohort effects adjust the level. The full regression specification is:

¹⁶Durlauf, Navarro, and Rivers (2010) summarize the range of assumptions required to employ aggregate regressions to estimate deterrence of policy within even a steady state framework.

¹⁷See the online appendix for details of the dataset and variable construction. The appendix also presents results for three additional regression specifications: (i) a time-invariant age profile; (ii) linear regression with age omitted; (iii) linear regression with time omitted.

¹⁸This is an important contribution to the criminal justice literature which has mostly focused on the changing age-structure of prison admissions, something we demonstrate can be attributed partially to cohort effects.

¹⁹This strategy relates to Schulhofer-Wohl and Yang (2016). We overcome co-linearity by placing more structure on the nature of the age effects. We also directly address the issue raised in Schulhofer-Wohl and Yang (2016) advocating that the age effect may be changing over time and cohorts. An alternative approach would follow Lagakos, Moll, Porzio, Qian, and Schoellman (2016) in using theory to identify where the age effect is negligible.

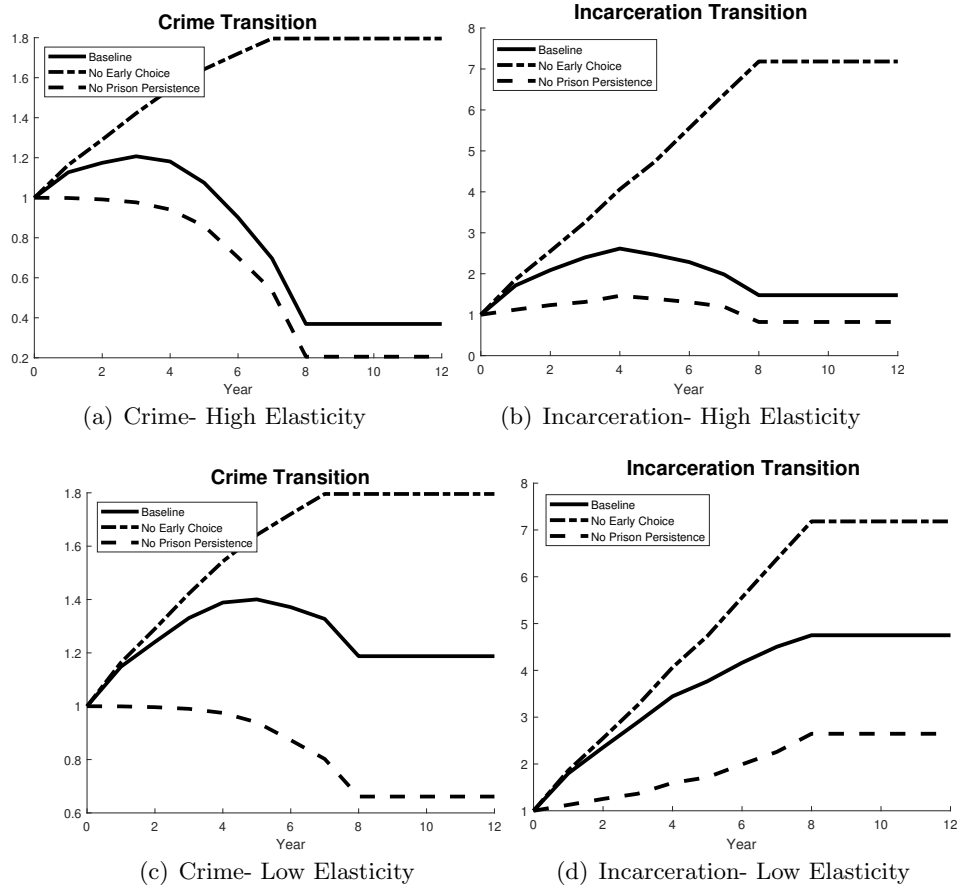


Figure 5: **Crime and Incarceration over a Transition in the Simple Model.** The first (second) row sets the elasticity of the initial crime choice to be high (low) with respect to the probability of prison conditional on committing a crime.

$$I_{a,c,t} = (\beta^T \mathbf{D}^T + \beta^C \mathbf{D}^C) * (\beta^A \mathbf{D}^A * \beta^Y \mathbf{D}^T)$$

$$\text{st } \beta^Y = 0 \quad \text{if } a < 26$$

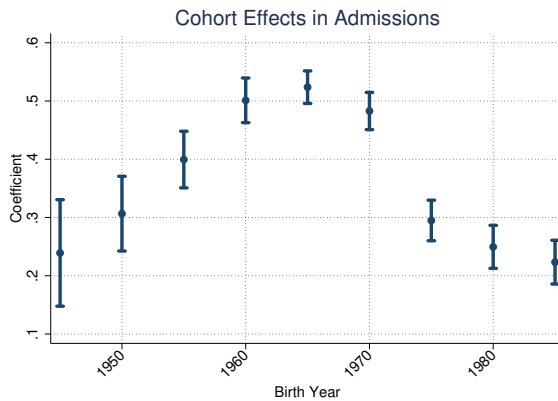
$$\beta^Y \geq 1 \quad \text{if } a > 25$$

The dependent variable is prison admission rate for new charges only. The independent variables D^T , D^C , and D^A are respectively dummies for time, age, and cohorts.²⁰ Although time enters in two ways, we refer to β^T as the “time effect”. The cohort effect is β^C . Age effects are multiplicative to time and cohort: β^A . Finally, we allow the age effect to change over time (β^Y) only after the peak of the life-cycle incarceration curve. We also impose that this coefficient be greater than or equal to one so that it only captures the flattening of the life-cycle profile.

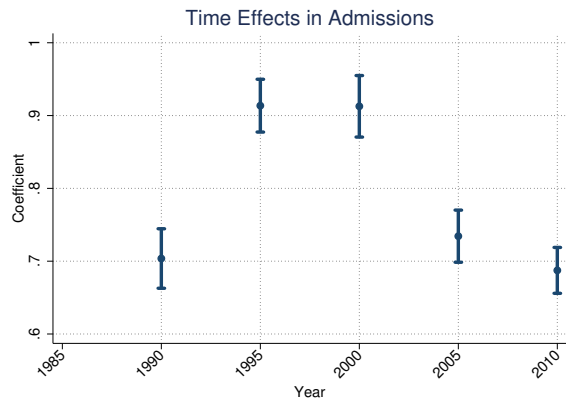
We estimate the regression equation using non-linear least squares. The cohort and time coefficients are presented visually for incarceration and for arrests in Figure 2. Looking at prison admissions, both time and cohort effects are significant. Time effects are around 50% larger in magnitude and are flatter across time varying only by about 25% from maximum to minimum. Cohort effects display a more dramatic non-monotonicity. They peak for the cohorts born in the mid 1960’s and both prior and future cohorts are around 60% lower. These facts together are consistent with our theory of how a more punitive incarceration policy should differentially affect cohorts. The 1960’s cohort cultivated their criminal careers prior to the time-related increase in punitive admissions during the 1980’s and were at the peak of their careers in their late 20’s and early 30’s where behavior is less elastic when the policy tightened.

The same estimation is run for arrests. The arrest data cover a larger number of states, but are not limited to crimes that lead to a conviction be it felony or otherwise. Still, although it is a noisy measure it tells the same cohort story as the incarceration rates. A couple of interesting differences are that cohort effects are of a larger magnitude than time effects in arrest data and that the cohort effects in arrests appear to be trending upwards again for cohorts born in the 1980s.

²⁰The data for arrests only provides 5 year age bands. Accordingly, we measure cohorts and time in five year intervals.



(a) Admission Time



(b) Admission Cohort

3 Quantitative Model

We present a quantitative model built on [Burdett, Lagos, and Wright \(2003\)](#) and [Engelhardt, Rocheteau, and Rupert \(2008\)](#) to show how punitive incarceration policy affects crime rates, incarceration rates and labor market outcomes. Following [Becker \(1968\)](#), the main cost of crime is forgone labor market opportunities. Incarceration policy amplifies this cost through two channels. The first is at the individual level: an increase in the likelihood of incarceration increases the expectation of lost employment opportunities when an individual engages in crime. The second is at the aggregate level: incarceration policy and subsequent changes in the aggregate crime rate can decrease job arrival rates if firms' profits suffer and they respond by creating fewer jobs.

Time is continuous. The economy is populated by a continuum of finitely-lived ex-ante identical individuals and identical firms. Individuals have linear preferences over consumption and discount the future at rate $0 < r < 1$. At any point in time, individuals can be in any of three labor market states: (i) employment; (ii) unemployment; or (iii) incarcerated. Employed individuals are currently matched with one firm. Unemployed individuals are those agents not currently matched with a firm, but searching for a job. Lastly, incarcerated individuals are those agents currently in prison.

3.1 Individual's Problem:

Unemployed individuals receive flow consumption b . Employment opportunities arrive at the poisson rate λ_w . All jobs are identical. Upon receiving a job opportunity, the unemployed individual

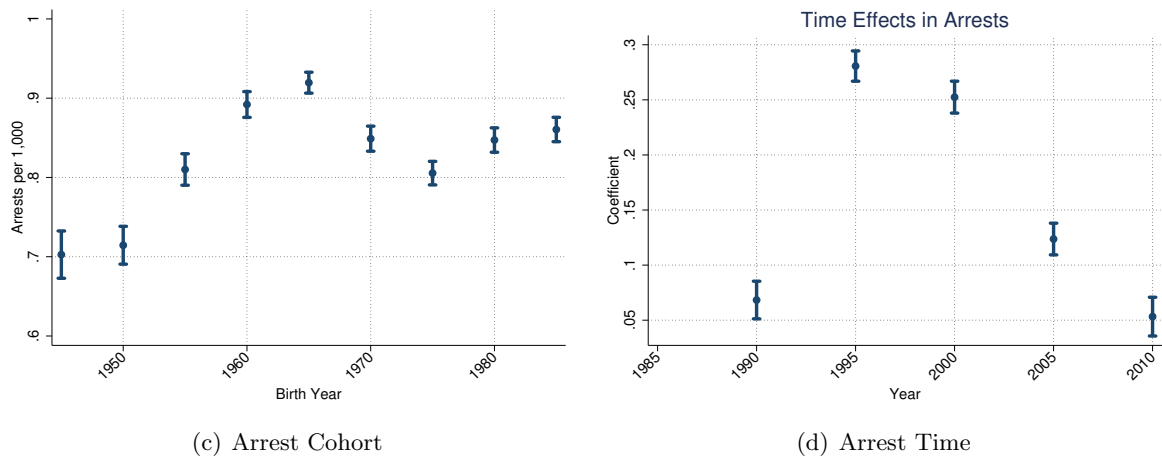


Figure 6: **Estimated Cohort Effects**:Prison admissions from National Corrections Reporting Program Data and restricted to admissions on new charges only. Arrests from FBI crime reports accessed through the Bureau of Justice Statistics

can either accept the offer or reject it. If they accept, they become employed and receive a flow wage proportional to their human capital (productivity) level: wh , where w is the wage level per human capital and h is the current human capital level of the individual. Employed individuals receive job separation shock at poisson rate δ upon which they become unemployed.

All individuals outside of the prison receive crime opportunities at age-dependent poisson rate η_a . Crime opportunities are characterized by an instantaneous reward of κ . These rewards are drawn from a common distribution $H(\kappa)$. The reward associated with a particular crime opportunity is observed to the individual before they make the choice of whether to commit the crime or not. If they choose to commit the crime, they receive the reward and, with probability π , they are caught and sent to prison.

Incarcerated individuals receive zero flow benefit while incarcerated. They receive a prison exit shock at rate τ upon which they are released and become unemployed.

We allow for several sources of heterogeneity across individuals: criminal capital, human capital, incarceration experience and age. The latter two sources (incarceration experience and age) provide an important link from the model to the data. They allow us to study the heterogeneous effects of the criminal policies for individuals along observable dimensions. The first two sources (criminal and human capital) are important for the quantitative performance of the model along dimensions that are not accounted for by observables. They will also contribute to the persistence of criminality and help generate the cohort effects that we have found in Section 2.

Labor market opportunities result in additional ex-post heterogeneity across individuals. Luck in job arrival and separation shocks, as well as incarceration incidence following a crime, generate different labor market statuses across individuals.

To better match the data along several dimensions, we introduce heterogeneity in criminal capital.²¹ We assume two types of criminal capital: low (lc) and high (hc). Both types probabilistically receive crime opportunities drawn from the criminal reward distribution and decides whether or not they are worth committing. We call these crimes “rational crimes”. High criminal capital types uniquely receive additional crime opportunities at the rate η^{hc} that they must commit. These crimes bring no instantaneous benefit to the individual. We call these crimes “irrational crimes”. All individuals are initially born with low criminal capital. Upon committing a crime a low criminal capital type becomes high criminal capital type at the poisson rate ν . Criminal capital can also be built in prison.²² During each period in prison, a low criminal capital type becomes high criminal capital type at the poisson rate ν^p . A high criminal capital type becomes a low criminal capital type each period at age-dependent poisson rate ξ_a .²³ This feature is instrumental in the model to match recidivism rates in the data that otherwise could not be accounted for. Recidivism rates are important because, for a given amount of crime, they dictate the share of the population engaged in crime by pinning down individuals’ crime intensities. In Section 6.2 we show a model estimated without this ingredient is counterfactual to the data in a way that we argue skews the policy implications of the model.

The third ex-post heterogeneity happens due to stochastic changes in human capital. Each individual is endowed with an initial human capital level, identical across individuals. We assume that human capital stochastically increases on the job, and stochastically decreases while unemployed or incarcerated. We assume that human capital shock arrives at the poisson rate ψ_i , and upon arrival human capital evolves according to labor status dependent function $f_i(h)$ given current human capital level h . That is, $h' = f_i(h)$ where $i \in \{e, u, p\}$ is an indicator for labor market state of the individual.

The fourth dimension of heterogeneity is a criminal record signifying past imprisonment obser-

²¹Nagin and Paternoster (2000) provide a review of the literature documenting “state dependence” in criminal activity based on past crimes controlling for other factors. This is exactly what the assumption of criminal capital is meant to capture.

²²Empirical evidence provided by Bayer, Hjalmarsson, and Pozen (2009) using proximity to offenders by type in Florida prisons.

²³This captures “turning points” associated with aging that deter crime and are not modelled explicitly following a literature harmonized by Laub and Sampson. These turning points include things like marriage, children, and even physical deterioration.

vable by employers. As a result, there will be two types of jobs in the economy, one for individuals who have never been incarcerated, called *non-flagged* individuals, and one for the individuals who have been incarcerated at least once, called *flagged* individuals. We denote k as the flag type, and $k = 0$ refers to non-flagged whereas $k = 1$ refers to flagged individual. The main motivation for including this feature is to capture the fact that in real life criminal record is accessible by the employers and the size of the equilibrium effect of this access on both workers with records and those without is very much an open question.²⁴ Although, employers cannot observe certain characteristics of the individuals, like future crime propensities, they can extract some information through their incarceration experience summarized by this flag. So, in the model, this flag indicator will play the signalling role for the employers to infer the crime propensity of the individual.

The last dimension of heterogeneity is the age dimension. Age $m \in M = \{1, \dots, \bar{m}\}$ individuals become age $m + 1$ at the poisson rate ϑ_m .²⁵ They live at most to the age of \bar{m} . When age \bar{m} individuals receive aging shock, they exit the economy by receiving zero utility, and they are replaced with age 1 individuals who start life with the lowest skill level and criminal capital and as unemployed.

3.2 Matching

We assume that employers can observe the flag type k and the age of the individuals m . They create jobs conditional on these traits. This segments the economy into $2M$ labor markets because workers search only for jobs suitable to their observable traits. We assume that each type of the labor market is modeled as in [Pissarides \(1985\)](#). That is, employers with vacant jobs and unemployed workers meet randomly according to an aggregate matching function, $M(u_{km}, v_{km})$ where u_{km} and v_{km} are the number of unemployed workers and vacant jobs for individuals with flag type k and age m . We assume that the matching function is strictly increasing in both terms and has constant returns to scale. The job arrival rate for workers is expressed as

$$\lambda_w^{k,m} = M(u_{km}, v_{km})/u_{km} = M(1, v_{km}/u_{km}) = M(1, \theta_{km}), \quad (3.1)$$

²⁴Harmonized electronic records across jurisdictions began to be available in the mid-1990's. However, analyzing the impacts of record access is non-trivial because access remained highly variable across states for over a decade. Also, explicit records are unlikely to be the only avenue through which criminal history could be ascertained. These issues are beyond the scope of this paper.

²⁵Stochastic aging is a standard method of reducing the state space (in this case to 3 age groups instead of 2392 age-weeks) to make the computation feasible

where θ_{km} is the market tightness for type- km jobs. Similarly, vacant job filling rate for firms is expressed as

$$\lambda_f^{k,m} = M(u_{km}, v_{km})/v_{km} = M(u_{km}/v_{km}, 1) = M(1/\theta_{km}, 1) = \lambda_w^{k,m}/\theta_{km}. \quad (3.2)$$

3.3 Firm's Problem:

Now, we turn to a firm's problem: Firms incur a flow cost k to post a vacancy. Upon meeting with a worker, the match turns into an employment contract as long as the surplus of the match is positive. By hiring a worker with human capital h , the match produces $y = h$, the worker receives a wage wh , and the firm collects profits $(1 - w)h$. The match dissolves if either (i) the worker receives a separation shock; or (ii) if the worker commits a crime and gets caught.

3.4 Early-life Choice

Finally, we allow for an early-life choice that affects later criminal activity and is irreversible. We assume that at the beginning of life, individuals can pay a cost to increase their crime arrival rate η . Once it is chosen it will be fixed for the rest of life of the individual. The motivation behind such a choice is related to the near consensus reached across economics, sociology, and criminology that early life choices are instrumental in later life outcomes. These choices include things like effort in school, which peers to associate with, or even parents' choices. For our purposes, this feature will pick up the residual cohort effects documented in the data that cannot be accounted for by the criminal persistence provided by other features of the model. It accounts for the limited elasticity of criminal behavior for cohorts born prior to a policy change. Specifically, we assume that individuals choose their crime arrival rates by solving the following problem:

$$\max_{\eta} -A \frac{\eta^{\rho}}{\rho} + EV_u^{1,0}(h_0; \eta) \quad (3.3)$$

where A and ρ are parameters to be calibrated. The first term in the above optimization problem, $A \frac{\eta^{\rho}}{\rho}$, captures, in a reduced form, the unmodeled costs of choosing a higher crime arrival rate η .²⁶
27

²⁶These costs include forgone education opportunities and higher income opportunities associated with that and any non-pecuniary costs of being associated in higher crime activities.

²⁷To be clear: there is no ex-ante heterogeneity across individuals in the model: in the stationary environment individuals will choose exactly the same crime arrival rate. However, when we study the transitional dynamics, that

In the online appendix, we provide several analytical predictions of a simpler model to illustrate the mechanisms discussed intuitively and decomposed quantitatively in Section 6.

4 Calibration and Estimation

We calibrate our model such that the initial steady state replicates empirical moments from the late 1970’s and early 1980’s according to data availability. The assumption of a steady state at this time is motivated by the prior century of stable rates (see 1).²⁸ While most parameters are jointly estimated to minimize the distance between the model and data statistics, we briefly provide a heuristic explanation of the moments most informative to different parameters. A full description of data sets, the calculation of target statistics, and the estimation procedure can be found in the Online Appendix.

4.1 Externally Calibrated Parameters

The time period is set to be one week. We assume that on average young individuals live for 7 years (between ages 18 and 24), middle-age individuals live for 10 years (between ages 25 and 34), and old individuals live for 30 years (between ages 35 and 64).²⁹ We set the prison exit probability to 0.007 implying 2.7 years of prison time on average, consistent with Raphael and Stoll (2009).³⁰ The probability of getting caught upon committing a crime, π , is set to 2% in accordance to our own calculations which are consistent with Pettit (2012).³¹

We choose $r = 0.1$ to provide an annual discount factor of 0.95. We assume that the criminal reward is drawn from a log-normal distribution with mean μ_κ and standard deviation σ_κ . We set $\mu_\kappa = 0$ and calibrate σ_κ to equal one half of the average annual labor income.³² This gives us $\sigma_k = 2.265$.

will generate heterogeneity in crime arrival rates across cohorts since along the transition the return to crime will be changing.

²⁸Indeed, rates were so remarkably stable across space and time that a theory of a “natural rate” of incarceration was prominent for many decades, (Blumstein and Cohen (1973)).

²⁹These average life-time for each age group implies the stochastic aging probabilities of $\vartheta_y = 0.00275$, $\vartheta_m = 0.00192$, and $\vartheta_o = 0.00064$ for the young, middle and old, respectively.

³⁰Raphael and Stoll (2009) also show that increases in admissions rates on new charges account for more than half of the rise in incarceration rates and when combined with parole failure would account for 90%. This leaves little room for considering changes in length of incarceration spells and so we do not include this.

³¹Please see the online appendix for details of our calculation of this number.

³²We lack data on the realized benefits of criminal activities necessary to identify the crime reward distribution and arrival rate of crime opportunities separately, for crimes other than property crimes like violent and drug related

Table 1: Externally Calibrated Parameters

Preset Parameters		
Parameter	Explanation	Value
ϑ_y	aging prob - young	0.00275
ϑ_m	aging prob - middle	0.00192
ϑ_o	aging prob - old	0.00064
τ	prison exit prob	0.007
r	discount factor	0.001
π	arrest prob	0.02
b	unemployment benefit	40%
μ_κ	mean of criminal reward	13
σ_κ	std of criminal reward	2.265
φ	matching function curvature	0.72
χ	matching function constant	0.14
w	wage share	0.5
η_o	crime arrival rate-old	0
$\xi_y = \xi_m$	rate of losing high criminal-young and middle	0

We follow Shimer (2005) for the matching function:

$$M(u, v) = \chi u^\varphi v^{1-\varphi}$$

where u is the unemployment rate and v is the vacancy rate. As in Shimer (2005), we set the flow utility of unemployment b to equal 40%; the matching function curvature φ to 0.72; and the matching function constant χ to 0.14. We assume that when workers and firms meet, they share the surplus equally, so we set the wage to be 50% of the productivity of the worker.

Table 1 shows the externally calibrated parameter values of the model.

4.2 Internally Calibrated Parameters

The rest of the parameters in the model are calibrated jointly by minimizing the percentage deviation of the model generated moments from the data moments.

crimes. As a result, we fix the crime reward distribution and calibrate the crime arrival rate using data on incarceration rates. However, past research on property crime and illicit drug sales income emphasize the importance of the skewness of the distribution, thus affirming our log-normal assumption, (see the literature review in Freeman (1999)). In the Appendix we provide robustness results with respect to the crime reward distribution parameters.

Labor Market Parameters: There are two parameters related to labor markets: exogenous job separation rate and vacancy cost. As in the literature, we calibrate these parameters to match average employment rate of black and white men between the ages of 18 and 34, without a high school degree in the 1980s: 71% as calculated from the 1980 U.S. Census; and the median non-employment duration of this population: 20 weeks as calculated from the NLSY.³³

Human Capital Parameters: We consider human capital to evolve on an exponential grid with an exponent ς .³⁴ As in Ljungqvist and Sargent (1998), we assume a constant probability that human capital increases by one level during each period of employment and a different constant probability that it decreases by one level while either unemployed or incarcerated. We estimate the curvature ς jointly with the arrival rates of the human capital shock when employed, ψ_e , and when non-employed (unemployed or incarcerated), $\psi_u = \psi_p$ by the method of indirect inference. The goal is to replicate in model generated data the coefficients from the following regression relating spells of employment and non-employment to wages estimated in the NLSY:

$$\ln(w_{it}) = \alpha + \beta^A A_{it} + \beta^{A2} (A_{it})^2 + \beta^N N_{it} + \beta^{N2} (N_{it})^2 + \gamma_i + \epsilon_{it} \quad (4.1)$$

where w_{it} is the observed wages for employed individual i at time t , A is the age of the individual, N is the months of non-employment including unemployment, non-participation and incarceration in the last two years, and γ_i is the individual fixed effects. We included the square terms for age and non-employment spell to capture the non-linearities in the human capital process incorporated in the model data via the curvature parameter ς .

We create a panel identical to the NLSY using the simulated data from the model on which to run the same regression. It features the same number of individuals and the individuals' actual ages in years. We transform the weekly model data to a monthly frequency as in the NLSY using the maximum wage of the individual in the last month as wage observation.

³³Census data accessed through IPUMS (Steven Ruggles and Sobek. (2018)). Data from National Longitudinal Survey of Youth (NLSY) accessed through Bureau of Labor Statistics, U.S Department of Labor (2014) and is for the 1979 cohort only.

³⁴We set the support of the human capital process as $\underline{h} = 1$ and $\bar{h} = 3$. Given this support, we space N grid points between \underline{h} and \bar{h} such that $h_i = \underline{h} + (\bar{h} - \underline{h}) \left(\frac{i-1}{N-1} \right)^\varsigma$ for every $i = 1, 2, \dots, N$. We set $N = 21$ in the estimation. This curvature replicates the concave human capital process prevalent in the data in a similar way as Kitao, Ljungqvist, and Sargent (2017). Although estimated parameters change, results are quantitatively and qualitatively robust to the number of grid points and the support.

Crime Parameters: Crime opportunities are exogenous and arrive at the same rate when employed or unemployed. The calibration targets informative about these parameters are incarceration rates.³⁵ We assume the crime arrival rate for young and middle-age individuals with zero criminal capital are the same ($\eta_y = \eta_m$). We set the crime arrival rate for the old individuals with zero criminal capital to 0 ($\eta_o = 0$). The underlying assumption of this empirical strategy is that all crime of the old is done by individuals who have committed crimes in their young or middle age years. This assumption is motivated by the very low admission rate of individuals over age 34 with clean criminal records (<1%, authors' calculations from NACJD data).

Criminal capital is binary: high or low. There are four parameters related to criminal capital process: the probability of gaining high criminal capital after committing a crime without being incarcerated, ν ; the probability of gaining high criminal capital when incarcerated, ν_p ; the probability of losing high criminal capital, ξ ; and the additional crime arrival rate for high criminal capital individuals, η^{hc} . We assume that only old individuals can lose high criminal capital. For young and middle-age individuals, we set $\xi_y = \xi_m = 0$. This allows us to identify ξ_o by targeting the incarceration rate of old individuals.

Statistics on repeated incarceration are informative about the share of high criminal capital types and the additional crimes they commit. We add to our estimation targets the three-year re-imprisonment rate for the released prisoners.³⁶ This rate is 20% young and middle age groups in the data.

The next target is the fraction of the population who are incarcerated by the age of 35. In the data, 19% of the population have been to jail or prison at least one time by the age of 35 (NLSY). In the model, the probability of gaining criminal capital, ν is a crucial parameter to capture this fact. If $\nu = 0$, crime will be more widespread among the population, whereas as ν becomes larger, crime will be concentrated among a few individuals. The incarceration rate of old individuals (age 35 to 64) disciplines the probability of losing the high criminal capital, ξ . This is because we assume that only high criminal capital types receive crime opportunities when old. Using NACJD and Census data, we calculate approximately 0.5% of the old population is incarcerated.

³⁵The median exit rate is observable and calibrated directly, leaving inflow rates to be inferred in order to match the share of persons incarcerated in the initial steady state.

³⁶These rates are calculated using the BJS Recidivism of Prisoners Released Series ([United States Department of Justice. Office of Justice Programs. Bureau of Justice Statistics \(2011-03-08\)](#)). We take care to include only those re-imprisoned who are convicted of a new felony charge. This excludes those re-incarcerated in jails or re-imprisoned for violations of conditions of their parole, probation, or other conditions of release in order to be consistent with the concept of incarceration and crime used in the model and in targets from other datasets. The details of these data and our calculations can be found in the online appendix.

Finally, we include the change in the young-to-old incarceration ratio over 30 years as a target for our estimation. This ratio dropped by 40% in the NACJD data. We include this target because it is a key prediction of the simple model in Section 2 supporting the mechanism that an incarceration experience increases future criminality (Proposition 2.3). In the full model, the impact of an incarceration experience operates partially through the acquisition of criminal capital. In accordance with this calibration strategy, the shape of crime propensity over the life cycle is also largely determined by the fraction of crimes committed by high criminal capital individuals versus low criminal capital individuals. If all the crimes are committed by high criminal capital individuals, deterrence is zero and the life-cycle profile is unaffected by changes in the policy.

Early-life parameters There are two parameters regarding the early-life choice: those that determine the costs of choosing a higher crime arrival rate, A and ρ in equation 3.3. Given the curvature parameter ρ , we pick A such that at the initial steady-state individuals choose the crime arrival rate pinned down by the estimation targeting the initial steady state. The parameter ρ captures the elasticity of early-life choice. If this choice is very elastic, the model generates a highly non-monotonic path for incarceration rate along the transition whereas if the early-life choice is inelastic, incarceration rate follows a more monotonic path. We calibrate this parameter to match the non-monotonicity of the time series of the incarceration rate of young individuals over 30 years that we have data. Since our model cannot capture the total change in incarceration, we target the ratio of the difference in the incarceration rate between 2009 and 1980 and the difference between the maximum incarceration rate within this period and 1980 incarceration rate for young individuals. This ratio is 20% in the data.

Table 2 shows the estimated parameters. Table 3 shows the performance of the model in matching the moments targeted. The model does a satisfactory job in capturing the moments targeted in the calibration.³⁷ Two remarks are in order. The estimated parameter for the early-life choice, A , implies agents spend around 1.3 times the annual income in the model to increase criminal opportunities in the baseline. This may seem to be high, but this parameter captures all foregone opportunities of choosing a higher criminal path which are not modeled here. The vacancy cost is also higher than other papers in the literature. The main reason for this is to match very low employment rate (71%) of our sample of interest: young and middle age individuals with a high school education or less.

³⁷In the online appendix, we discuss how removing elements such as criminal capital or prison flag compromises the model's fit. We also provide robustness checks on some of the externally set parameters.

Table 2: Calibrated Parameters

Parameter	Explanation	Value
$\eta_y = \eta_m$	crime arrival rate-young and middle	0.038
c	vacancy cost	133.5
δ	separation shock	0.015
ν	prob of being high criminal-no prison	0.031
ν_p	prob of being high criminal-imprisoned	0.36
η^{hc}	crime arrival rate - high criminal	0.077
ξ_o	rate of losing high criminal-old	0.028
ψ_p	human capital shock-incarcerated	0.010
ψ_u	human capital shock-unemployed	0.014
ψ_e	human capital shock-employed	0.011
ς	exponent for human capital grid	0.37
ρ	curvature parameter	1.91
A	constant in cost function	104796.5

Notes: The Table shows the internally calibrated parameters of the model. See the main text for a discussion of the explanation of these parameters, and how they are identified in the model.

Table 3: Model Match

Moment	Data	Model
Incarceration - young and middle	3.9%	3.8%
Incarceration - old	0.5%	0.5%
Unemployment duration	20 weeks	20 weeks
Employment rate - young and middle	71%	71%
Recidivism rate (3 years)	20%	20%
Fraction incarcerated by age 35	19%	19%
Regression coefficient- β^A	0.0228	0.0225
Regression coefficient- β^{A2}	-0.000425	-0.000224
Regression coefficient- β^N	-0.0045	-0.0044
Regression coefficient- β^{N2}	-0.000025	-0.00015
Change in young-old incarceration	40%	40%
Change in incarceration for young	20%	20%
Crime Arrival Rate in initial SS	0.038	0.038

Notes: The Table shows a comparison of empirical and simulated moments. See Appendix for a detailed discussion for data sources on the empirical moments.

Table 4: Characteristics of Criminals

	Criminals	Overall	Young
Unemployment rate	26.1%	23.4%	28.7%
Human capital-average	1.86	2.21	1.57
Human capital among unemployed	1.54	1.90	1.45
Human capital among employed	1.90	2.24	1.62
Frac of high criminal capital	64.4%	5.6%	8.2%
Prison Flag	35.8%	16.7%	6.7%
Young and middle population	97.0%	36.2%	-

Notes: The Table shows a comparison of various statistics for the individuals who commit crime and the overall population.

5 Steady-State Analysis.

To better understand how a change in punitive policy affects crime, labor markets, and inequality, we first discuss the determinants of crime in the initial (pre-1980's) steady-state.

Table 4 shows criminals differ from the overall population along several dimensions. As expected, criminals are more likely to be unemployed, younger, with lower human capital and higher criminal capital, and more likely to have criminal record in their history. In the initial steady-state 74% of criminals are employed compared to 77% of the general population. However, they are employed at a much lower wage. The human capital of criminals is on average around 20% lower than the population average (2.21 vs 1.86). Given their respective distributions, the probability of weekly crime conditional on employment is 0.67% for the unemployed and 0.58% for the employed.

The most important dimension of these data is that the majority of the crimes are committed by the individuals with high criminal capital and previously incarcerated individuals. The fraction of all individuals with high criminal capital among the population is 5.6% compared to 64.4% of the individuals that commit crime. Similarly, 16.7% of all individuals have a prison flag compared to 35.8% of the individuals that commit crime. This implies that most crime is committed by “career criminals” and that criminal capital drives the recidivism prevalent in the data. Criminal careers are mostly ended by the loss of criminal capital in old age. Subsequently, individuals over 35 have a crime rate one-eighth of those younger than 35.

The next logical question is what determines who begins crime in the first place? All individuals draw from the same crime reward distribution and face the same prison risk if they commit the crime. What may differ across individuals is what they lose by going to prison. These opportunity costs are increasing in human capital and higher for those currently employed. Figure 7 shows

the probability of committing crime conditional on receiving an opportunity for young individuals without criminal capital or a prison flag. This probability decreases as human capital increases, notably at a faster rate for the lower half of the human capital range.

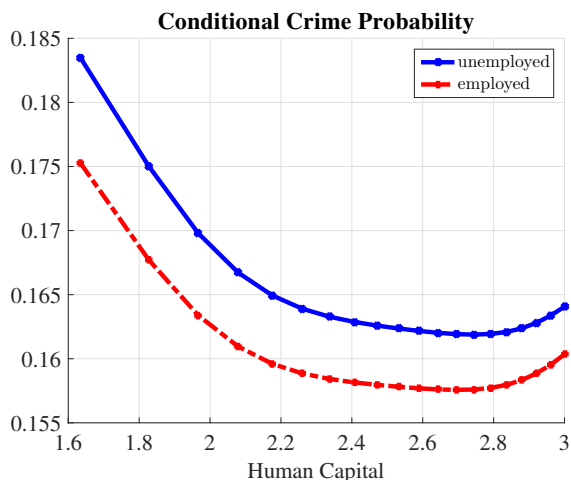


Figure 7: **Determinants of Crime - Labor Status:** The figure shows model generated crime probability conditional on receiving an opportunity as a function of human capital for a young individual with low criminal capital and prison flag.

Whereas policy functions show the contribution of the current state to an individual’s crime entry choice, the impact on total crime in the economy depends on the distribution of individuals over this state. To better get at this contribution, we run a simple linear regression on individuals’ probabilities of committing crime within the week.³⁸ Table 5 presents the marginal effects of this regression. The average weekly crime probability in the economy is 0.77% per week, with a standard deviation of 1.8 percentage-points and a maximum of 8.7%. Focusing on the middle column, we see the crime entry choice is responsive to labor market outcomes, but not overly so. An increase in one standard deviation of wages reduces crime by 4.5-5% and gaining employment reduces crime by another 4.5%. These effects may seem small, but they reflect the data the model is calibrated to match. The variance in wages for this population of young men without college is very small, so of course it does not provide much variation in crime outcomes. Furthermore, the separation rate from employment in the data is almost as high as the probability of going to prison if one commits a crime. This makes the opportunity cost of employment low. Criminal behavior in the

³⁸Specifically, the dependent variable uses the individual crime reward threshold to calculate the probability of receiving a crime reward above that threshold. Unemployed wage is the shadow wage.

Table 5: Marginal Effects on Weekly Crime Probability

	All	Young- No Criminal Capital	High Criminal Capital
Middle	0.074	0.000	0.008
Old	-0.638	0.000	-1.088
Unemployed	0.017	0.030	0.058
Unemployed- 1 Stdev Wage Increase	-0.034	-0.044	-0.035
Employed- 1 Stdev Wage Increase	-0.045	-0.050	-0.034
Criminal Capital	7.746	0.000	0.000
Prison Flag	-0.005	0.002	0.001
Constant	0.640	0.623	8.440
Mean	0.77	0.68	8.4
Max	8.7	0.74	8.7
Standard Dev.	1.82	0.04	0.31

Dependent variable is in basis points. For example, the mean weekly crime probability is 0.77%. The effects of a 1 standard deviation increase in wages considers the unconditional wage distribution for the column population.

data reflects this logic. We see most criminals are employed.³⁹

If the crime entry decision is driven by luck, is there any hope that improving labor market opportunities can end a criminal career? According to Figure 8(a), this is unlikely *if* an individual has accumulated high criminal capital. It shows they commit about 50% more crimes than those without criminal capital regardless of their human capital. However, Figure 8(b) is more optimistic. It shows a prison record itself does not put an individual on this path of higher crime.

To summarize, the determinant of who commits crime is largely luck. Young individuals are similarly likely to enter a criminal path, it just depends on who draws a sufficient crime opportunity. From here criminal persistence is driven mostly by past criminal behavior through additional crimes among those with high criminal capital until this channel is eliminated by old age. This should not be interpreted as implying that economic conditions don't matter. That is not true. For example crimes arrive with 3.8% chance at a weekly frequency but from this the young only take about the top 20%, so they are being picky. It is just that the impact of wages is diminished because wages are compressed for the population of low skilled men we study implying little variation in wages to affect variation in the likelihood of starting crime. However, if wages were raised for everybody, crime would go down (see Section 6.7). This population also faces relatively high separation rates. This lowers the deterrence of having a job today since one may expect to lose that job by tomorrow.

³⁹Criminals in the data do report lower wages, but we cannot see their wages at their first crime.

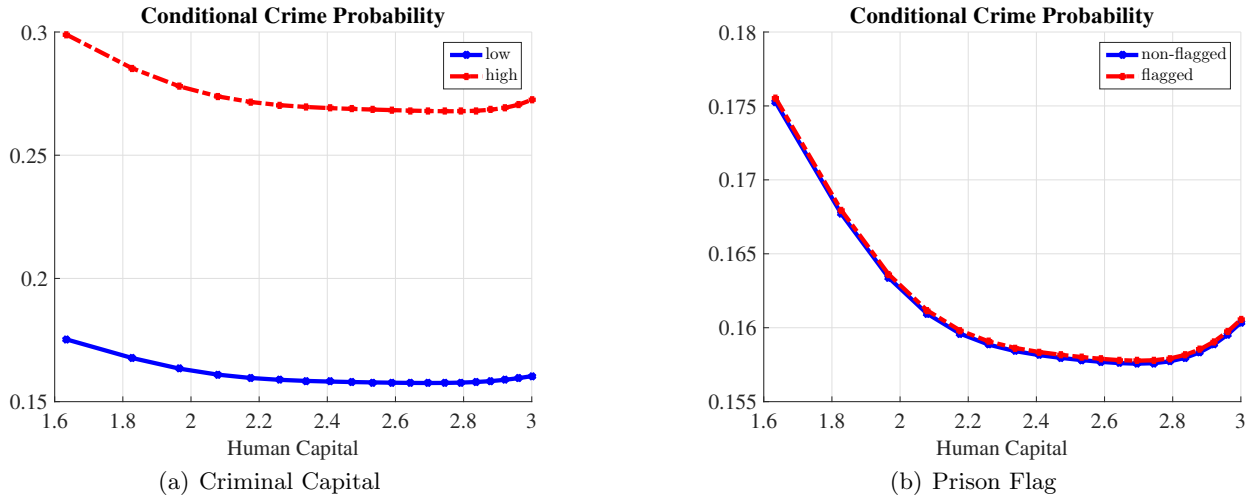


Figure 8: **Determinants of Crime - Criminal Capital and Incarceration:** Both figures show model generated crime probability conditional on receiving an opportunity as a function of human capital for a young employed individual. The left panel plots it across different criminal capital and the right panel plots it for different incarceration experience. Flagged are the ones who have been to prison and unflagged are the ones who have never been to prison before. The qualitative properties of the figures remain the same for the unemployed and/or middle-age individuals.

6 Punitive Incarceration Reform

In this section, we study the effects of an increase in the probability of incarceration after committing a crime on aggregates like crime rates, incarceration rates, labor market variables and inequality. We assume the probability of imprisonment for a crime (π) permanently and unexpectedly increases from the 1980's steady state of 2% to a higher value 8% similar to what we calculate for the US in 2000.⁴⁰

6.1 Steady-State Comparison

We begin by comparing steady states. To see how a change in π affects the incarceration rate, consider the probability of incarceration for an individual with current state s : $\pi\eta(1 - H(\kappa^*(s)))$. The overall crime rate is $\pi\eta \int (1 - H(\kappa^*(s))) d\mu(s)$, where μ is the distribution of individuals across states. Increasing the probability of getting caught conditional on crime, π , affects the overall crime rate through three channels. The first is a direct “arithmetic” effect by increasing π

⁴⁰See the extended appendix for the assumptions we make in this calculation.

holding all else constant. The second is an indirect deterrence effect through endogenous responses of the individuals of a given state s . They increase their crime reward thresholds, $\kappa^*(s)$, and decrease their early-life criminal intensity choice, η . The final effect is an indirect compositional effect through a change in the distribution of individuals across states μ . The endogenous job creation response of firms contributes to this effect.⁴¹

The deterrence channel lowers crime and mitigates the mechanical impact of the first arithmetic channel working to increase incarceration. Therefore, it is unclear whether an increase in π will increase or decrease incarceration rates. If the deterrence effects are small, then the arithmetic effect of higher conditional probabilities can dominate and increase the overall incarceration rate. This typically generates a “Laffer curve” type of non-monotonicity between π and the incarceration rate. In our model it is also unclear that crime rates should fall. It is true that at every state s , individuals raise their threshold $\kappa^*(s)$ and commit less crime. However, in our model a prison experience worsens an individual’s state and makes them more likely to do crime. In this way it is possible that an increase in π leading to an increase in incarceration will change the distribution of individuals across states enough to actually increase crime.⁴²

Table 6 shows the comparison of steady-states across two different criminal justice policy regimes. We find that, at the steady state, the direct arithmetic effect of the increase in π dominates the other two channels. Incarceration increases as the criminal system becomes more punitive. We also find that deterrence (and incapacitation) overwhelm the third channel provided by the prison experience. Crime decreases as the criminal system becomes more punitive.⁴³

6.2 Transitional Dynamics

In Section 2 we argued that when criminal behavior is persistent the transition following a change in punitive policy can take several decades. This makes evaluation of the impact of the policy change difficult. It also makes policy design difficult because it provides unique costs associated with the policy change that are differentiated across cohorts. We then established the empirical relevance of this mechanism by showing cohort effects in the data. We now study quantitatively how the channels of criminal persistence included in our model affect these issues pertaining to the

⁴¹The online appendix provides an analytic exposition of these effects within a simple model.

⁴²In Section 12 of the Online Appendix, we plot the incarceration rate as a function of π across steady-states in the calibrated model. It is non-monotone.

⁴³The strengths of these different channels depend on the magnitude of π . In the appendix we provide comparative statics on steady states with respect to π illustrating this and the “Laffer Curve” effect.

Table 6: Steady-State Comparison

Steady-State Variables	SS1	SS2
	$\pi = 2\%$	$\pi = 8\%$
Incarceration - young	2.4%	2.7%
Incarceration - middle	4.8%	5.2%
Incarceration - old	0.5%	0.6%
Incarceration - total	1.7%	2.0%
Crime Rate	0.6%	0.18%
Crime Rate-unemployed	0.67%	0.23%
Crime Rate-employed	0.58%	0.16%
Unemployment rate	23.4%	23.3%
Recidivism rate-young	18%	44%
Recidivism rate-middle	21%	52%
Lastly employed when arrested	73.4%	69.6%
Frac w/ high criminal capital	5.6%	2.6%
With prison flag	16.7%	14.4%
High criminal capital among criminals	64.4%	62.4%
Prison flag among criminals	35.8%	53.5%
Wage of criminals as a fraction of wage of employed	84.4%	77.7%

Notes: The Table shows a comparison of two steady states, one with $\pi = 2\%$ and one with $\pi = 8\%$.

transition.

The left panel of Figure 9(a) shows the evolution of the total incarceration rate along the transition. It starts at 1.7%, doubles in 5 years, and then gradually declines to the new steady-state level of 2%. Interpreting these figures through the lens of the simple theory in Section 2, we see that the model calibrated to the 1980s steady state delivers a level of criminal persistence for those with criminal histories that is sufficiently inelastic and an early life choice to enter a criminal career that is sufficiently elastic to provide a non-monotone incarceration path over the transition. The criminal persistence of early cohorts engaged in crime under the old policy limits their response and drives the increase in incarceration rates in the short run. The response of the cohorts born under the new policy captures the full deterrent effect and drives the fall to the new steady state incarceration rate in the long run. The right panel of Figure 9(a) further refines our understanding of these elasticities. The criminal persistence of those with criminal histories is not so large as to increase crime in the short run. The potential impact of the prison experience to increase criminality is also not so large as to increase crime at any point along the transition.

This non-monotone transition implied by the model calibrated to a steady state provides further evidence that the evaluation of punitive policy inferred from short-run effects is likely to be

problematic for the US data. Measuring the increase in incarceration in the short and even medium run after the policy change provides little information about the eventual steady state effect unless interpreted through the lens of an overlapping generations model such as the one we provide. It also shows that inferring the causal impact of changes in incarceration on crime using correlations between these time series is also a deeply flawed approach. Crime falls as incarceration rises over the first ten years of the transition but crime also falls as incarceration falls as the transition continues to the new steady state. The correct comparison would be to compare steady states and observe that incarceration rises and crime falls as the policy becomes more punitive.

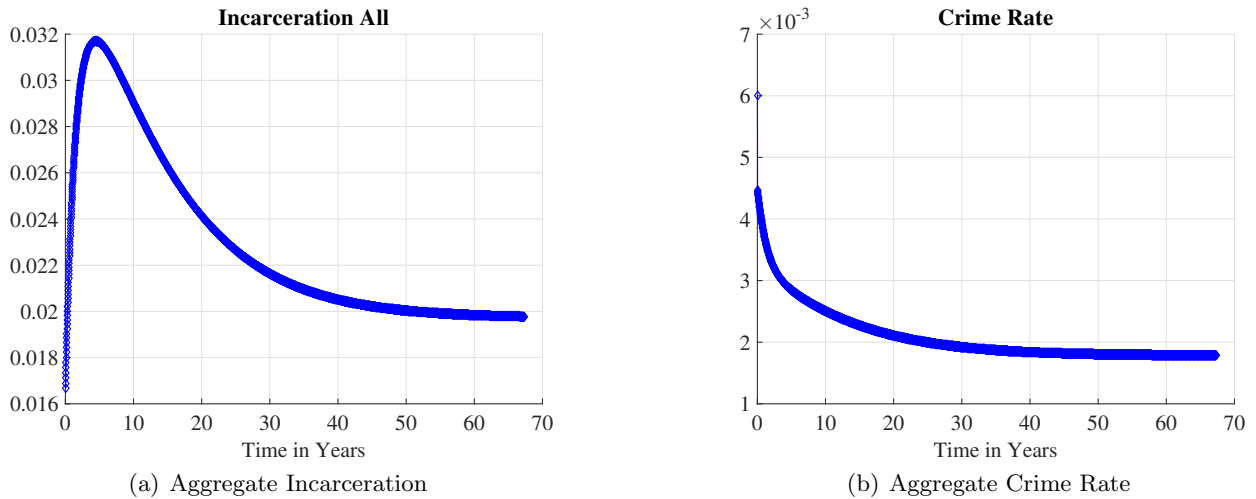


Figure 9: **Incarceration and Crime Rate over Time:** Left panel: the evolution of the total incarceration rate over the transition. Right panel: the evolution of the aggregate crime rate over the transition. Aggregate crime rate is computed as the ratio of total crimes to the measure of non-incarcerated individuals.

The transition in the model is also consistent with the cohort empirical motivation of Section 2 backing this theory. Figure 6.2 shows the evolution of incarceration rate is different for different age groups. The incarceration rate of young individuals reaches its maximum in around 3 years, and converges to the steady-state level in around 30 years. However, the incarceration rate of old individuals reaches its maximum in around 10 years, and converges to the new steady-state in more than 50 years. In terms of magnitudes, the middle-aged group sees the largest rise in incarceration rates in the short term, but the old-aged individuals have the largest permanent rise in the new steady-state.

The model does not generate a quadrupling of the incarceration rate as observed in the data and it predicts a transition that is too quick compared to the data. However, this is not a failure

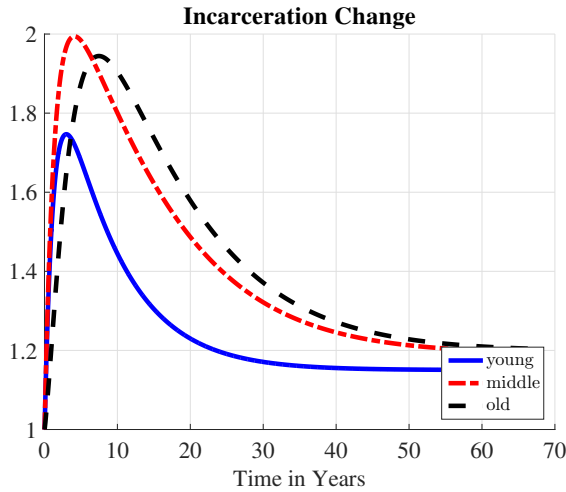


Figure 10: **Incarceration by Age:** The figure shows the incarceration rate along the transition for different age groups relative to their initial steady-state levels.

because this was not our goal. Instead, this experiment is an accounting exercise to isolate the impact of changes in punitive policy alone. In reality the policy was likely a reaction to changes in crime driven by other exogenous factors. In Section 6.7 we explore whether changes in the benefit (crime reward) or opportunity cost (wages) can improve the model fit. With respect to the speed of the transition, we assume that the policy change is sudden and one-time event. However, in practice the de facto implementation of policy changes was more gradual than the de jure reforms.⁴⁴

It is still useful to understand that there is a maximum increase in incarceration we can generate by increasing π alone as agents respond by lowering their crime rates (as explained in our “Laffer curve” discussion). This holds for a similar reason even if we change the calibration to increase the role of criminal capital and irrational crime. As we increase the probability of gaining criminal capital or frequency of irrational crimes for those with high criminal capital, agents react by reducing the number of first crimes committed. This endogenous reaction limits the scope of criminal capital to increase the incarceration rate. In other words, the irrational crimes are not a free parameter that enable us to match whatever we want.

⁴⁴A key constraint to such a drastic change in the use of punitive incarceration was capacity constraints. From 1985 through 1990 fifty to seventy percent of prisons were over capacity. In fiscal year 1990, congress allocated an additional \$1 billion for physical investment in expanding buildings and facilities. Since 1993 incidence of overcrowding has remained below 40% (James (2013)).

6.3 What drives the Non-Monotonicity of Incarceration?

The extent of the rise in incarceration after a policy change and whether or not it rises more in the short run than in the long run depends on several factors. The full long run deterrent effect is provided by changes in the early life choice, changes in the crime threshold rules of agents given a particular state, and how the distribution of agents over states changes over time. Figures 11(a) and 11(b) provide results of a counter-factual experiment in which we imagine if one or more of these factors were missing. The “benchmark” is the full model. The “no initial response” line keeps the early life choice fixed at the first steady state. The “no initial and firm response” line keeps both the early life choice and the market tightness fixed. The “no response” line keeps all endogenous decision rules fixed at the first steady state: the early life choice, the market tightness, and the crime thresholds of agents conditional on their state. In this final line all that remains is that the change in policy moves people around to different states by sending them through prison more often.

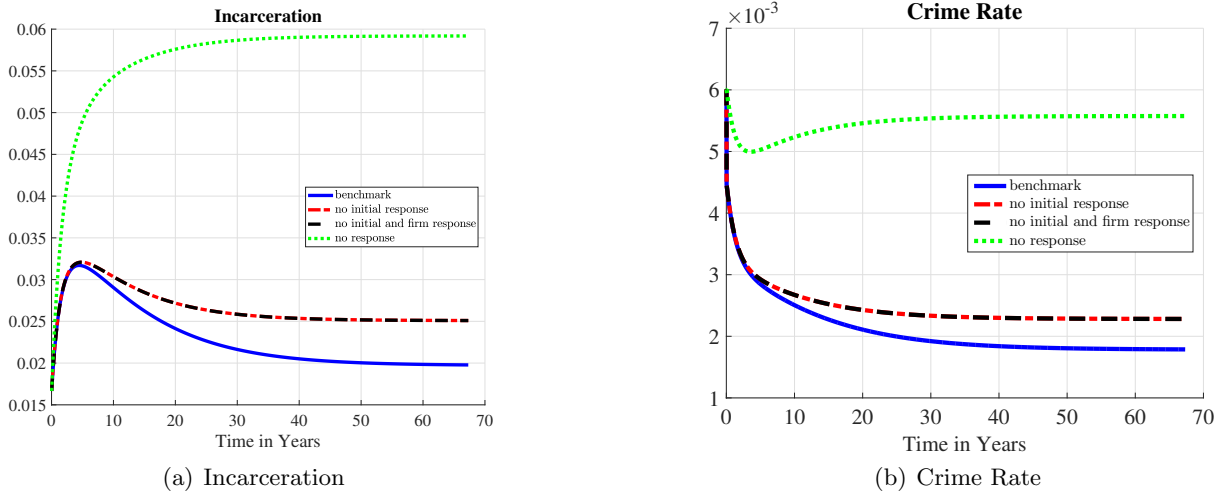


Figure 11: Incarceration and Crime Over Time: The figures show the decomposition of the evolution of incarceration and crime rate along the transition. The solid line is the benchmark economy. The long dashed line is the economy when individuals keep their early life crime choices as in the first steady-state. The dashed line is the economy when firms keep the same job creation level and individuals keep their initial choices as in the first steady-state. Lastly, the dotted line is the economy when firms keep the same job creation level, individuals keep their initial and ex-post crime choices as in the first steady-state.

The change in individuals crime thresholds at a given state is quantitatively the most important factor in the model. It provides the movement from the “no response” line to the “no initial and

firm response” line. All along the human capital distribution the typical agent raises their threshold enough to lower their crime probability by about 60% (See Figure 12). This change in behavior reduces the rise in incarceration by about 81% at the new steady state relative to if there were no endogenous responses in the model by amplifying the fall in crime by nine-fold. This is the classic deterrence channel studied in the literature. These graphs also show that the role of this channel grows as time passes: it reduces the rise in the incarceration by only 36% at year 5 by only amplifying the fall in crime by three-fold. Again, to emphasize the point: the classic channel of deterrence on the decline in crime has previously studied comparing steady states only and we find its importance increases three-fold from year 5 to year 30 along a transition.

The elasticity of the response of the early life choice of new generations to the observed policy change was estimated in our calibration strategy as a residual. We chose this parameter such that the model replicated the non-monotone shape of the prison admissions time series in the data. The estimated value implies a drop of crime arrival rates by about 25%: from 2.8% to 3.8%. Figures 11(a) and 11(b) show that this plays a modest, but non-trivial deterrence role in the quantitative prediction- it moves from the ”no initial response” line to the ”benchmark” line. It plays a larger role in driving the non-monotonicity, but still the classic deterrence channel of changing policy rules provides about half of the decline from the peak in the benchmark model. How does this work? Recall that a main driver of who commits crime is luck: about two-thirds of crime is done by those who get good draws from the crime reward distribution as a youth and build criminal capital. The fall in the crime arrival rate due to the change in the early life choice lowers crime and incarceration by helping to lower the share of individuals engaged in crime in the population.

The change in the market tightness provided by changes in firms’ job posting behavior has near zero impact on incarceration and crime. This is not to say that the tightnesses of labor markets do not change. They do, as we discuss next in Section 6.5. It is that the differential impact of employment and unemployment on decision rules governing the crime choice is very small. Therefore changes in employment rates do not affect criminal behavior much.

6.4 The Contribution of Incapacitation versus Deterrence

The above discussion can also be reframed through the classic lens used by criminologists to study the impact of criminal justice reform, namely: incapacitation and deterrence effects. The incapacitation channel lowers crime by putting likely criminals in prison where they cannot commit crime. The deterrence effect considers that more punitive policies lower crime by deterring individuals

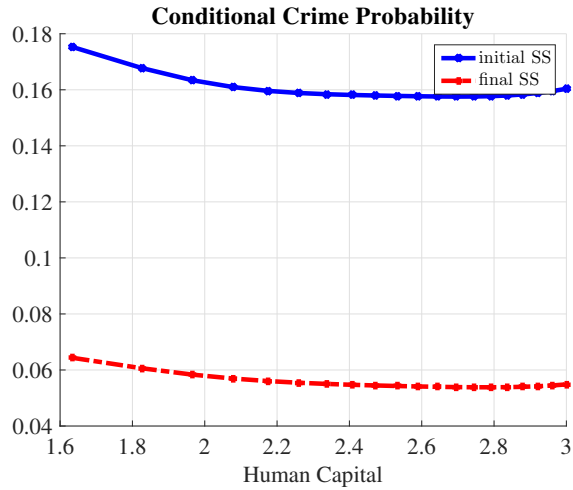


Figure 12: **Crime Probability:** The figure shows the crime probability for an unemployed young individual as a function of human capital across two steady-states.

from committing crime in the first place.

These effects are hard to measure in the data, but easy to isolate in our structural model. The incapacitation effect is isolated in a counterfactual transition experiment by setting the time spent in prison to zero whilst maintaining the expected cumulative effects of prison on human capital, the prison flag, and criminal capital from the baseline model. The deterrence effect is isolated in a second counterfactual transition experiment by fixing the decision rules of the individuals and firms at the initial steady-state level along the transition.

Figure 13(b) shows that both incapacitation and deterrence work to lower the crime rate, but at different times and in different magnitudes. In the short-run, the incapacitation effect dominates. This “cleansing” of the population is important in the short run because deterrence is limited by the inelasticity of individuals’ crime choice due to the channels of criminal persistence in our model. In the long-run when the full deterrent effect is realized it dominates the incapacitation effect each respectively accounting for about 80% and 20% of the total decline in crime at the new steady state.

Figures 13(c) and 13(d) show that both deterrence and incapacitation have significant effects on the employment and unemployment rates. The contribution of each channel is a bit by construction. While it is true that market tightness changes due to the response of firms’ vacancy posting, the dominant mechanism is the assumption that once an individual is released from prison, he is unemployed. Since we maintain the cumulative impact of prison in this experiment, removing

either incapacitation or deterrence increases the likelihood workers who commit crime lose their jobs through this mechanism. It also provides the asymmetric effect of incapacitation and deterrence on employment. Without deterrence, employment permanently decreases by about 3% due to the higher share of the population imprisoned. Without incapacitation, employment permanently increases by about 1% due to a lower share of the population imprisoned freeing more persons to be eligible to work. The asymmetry in these magnitudes highlights the firms' responses and the increased number of released prisoners churning through unemployment.

6.5 Labor Markets and Inequality

Our structural model provides a unique environment to study the impact of large changes in punitive policy on aggregate employment and wages. The response of aggregate employment is modest: employment falls 1.5 percentage points in the short-run and recovers in almost 30 years. The impacts on younger agents and those with criminal records are larger. Figure 14(a) shows middle-aged individuals experience the largest drop in employment- a decline of 4%. This is because this group experiences the largest increase in the incarceration rate (Figure 6.2). Figure 14(b) shows individuals flagged with a criminal record experience a drop of around 6 percentage points in the employment-population ratio at the peak of the transition to 62% compared to 76% for the general population.⁴⁵

The fact that these cross-sectional differences across age are only present in the transition shows how the policy generates inequity in employment opportunities for a cohort. This contrasts the permanent inequity provided for those with a criminal record as seen in 14(b). This is due to two reasons. First, the direct effect of increasing the probability of imprisonment conditional on committing a crime. As criminals churn more often through the prison, they are released to unemployment. The second is due to the endogenous response of firms vacancy posting behavior across labor markets indexed by age and prison record flag (Figure 15(a)). Recall that firms use observable information on an individual's age and prison record flag to form expectations about the value of the match conditional on his unobservable human capital and criminal capital. Market tightness falls permanently for those with a prison record flag, thus increasing unemployment duration, because the information provided by a prison record flag changes. First, crime becomes more concentrated within a small population after the policy change. This implies a prison flag is

⁴⁵Flagged types start with substantially lower employment population ratio with respect to non-flagged ones (68% vs 76%)

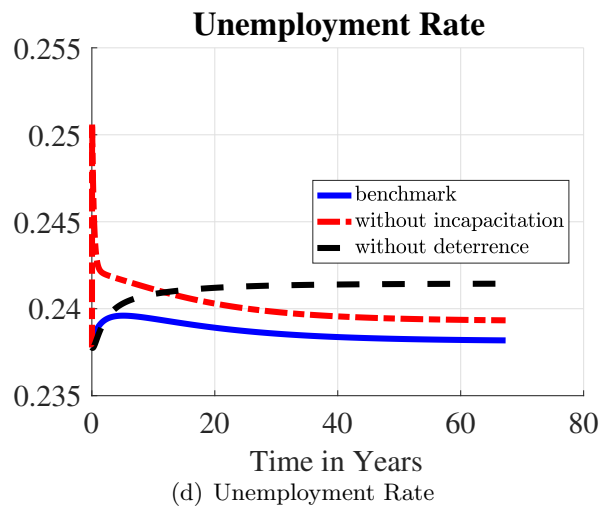
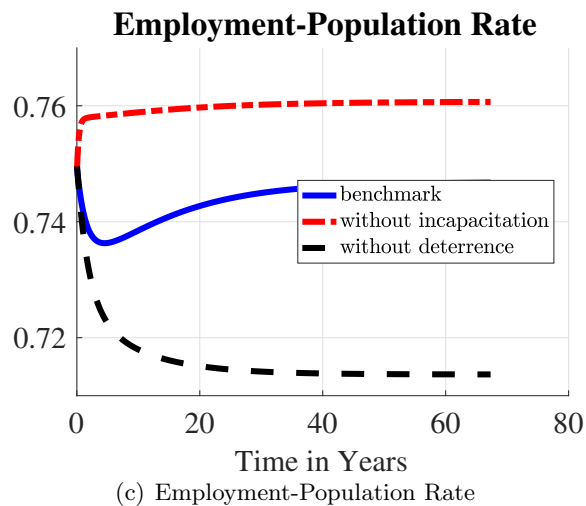
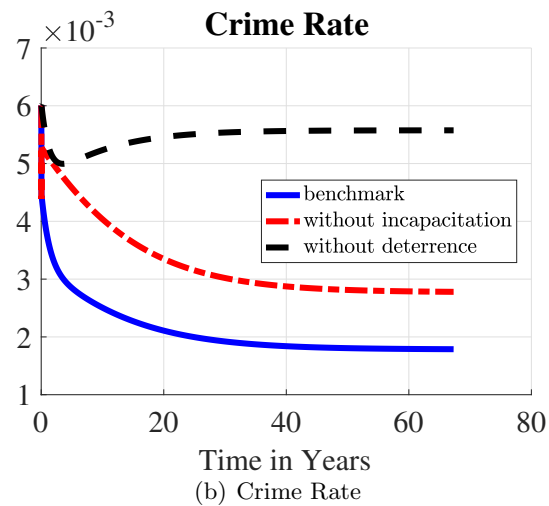
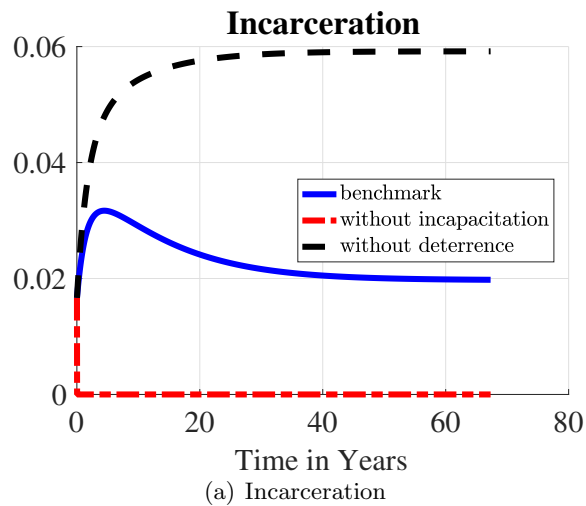


Figure 13: Incapacitation versus Deterrence: The figures compare the evolution of incarceration, crime rate, employment-population ration and unemployment rates along the transition without incapacitation or deterrence effects. The solid line is the benchmark economy. The long dashed line is the economy when incapacitation is eliminated. The dashed line is the economy when all decision rules of the individuals and firms kept at the initial steady-state levels.

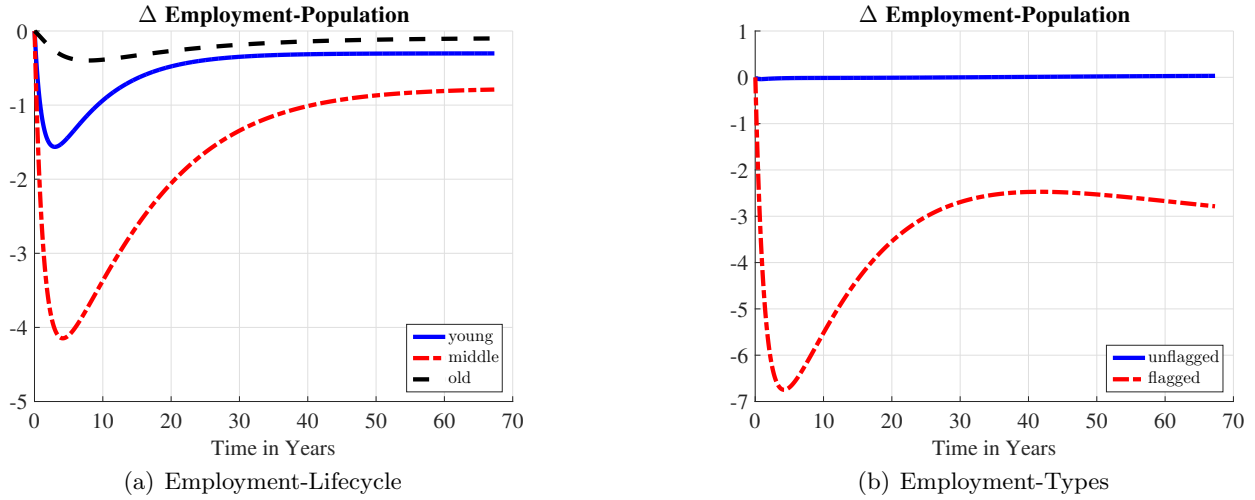


Figure 14: **Employment across Different Groups:** The figures show the evolution of employment-population ratio for different individual groups. The left figure is across age dimension and the right figure compares the employment-population ratio for non-flagged and flagged individuals. Both are changes in percentage points relative to the initial steady-state level.

more indicative of high criminal capital; crime is mostly done by career criminals. Second, criminals cycle through prison more often and lose additional human capital after the policy change. This implies a prison flag is more indicative of low human capital.

The dynamics of market tightness for the old clearly show the differential impacts of incapacitation, deterrence, and the prison experience over the transition. First, incapacitation dominates: the labor market is cleansed. Second, the prison effect kicks in: imprisoned workers are released with low human capital. Finally, full deterrence is realized: new cohorts chose lower crime arrival opportunities thus increasing the expected duration of the match.

The magnitude of the difference in market tightness between those with and without criminal records may seem smaller than expected. Our results should not be interpreted as saying that criminal records don't matter. Instead they say that criminal records don't matter much through the mechanisms featured in the model where the costs of hiring a worker with a criminal record is that they are likely to have low productivity and quit early. Alternative mechanisms could amplify these effects. For example, we make the assumption that wages are proportional to productivity. In reality, minimum wages likely truncate the distribution of wages above that of productivity or efficiency wages could be operational. There may also be other costs inflicted on an employer from hiring a criminal. For example, if they steal from their firm.

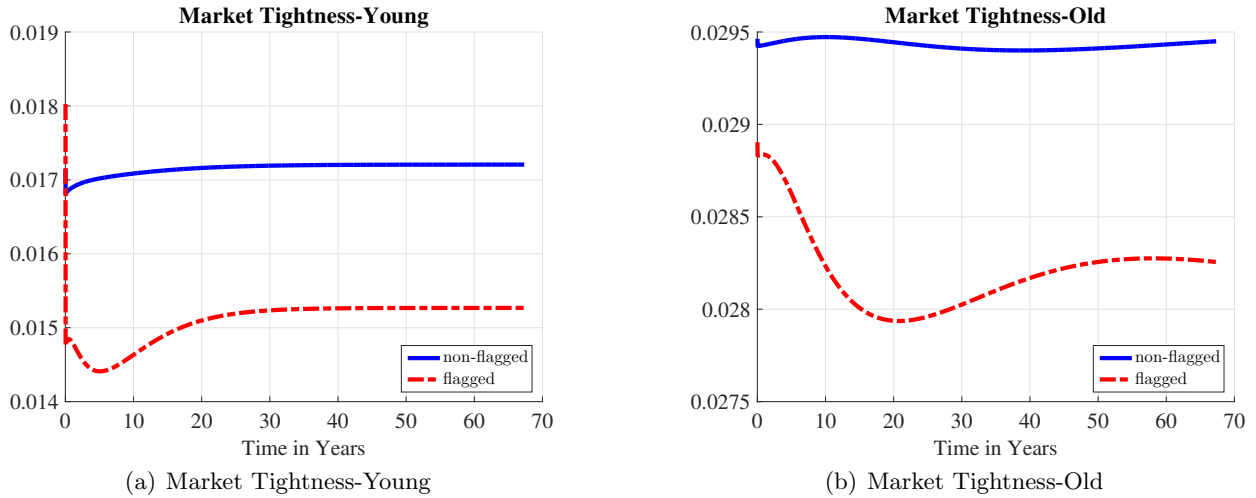


Figure 15: **Market Tightness over Time:** The figure on the left shows the dynamics of market tightness for the young individuals for both flagged and non-flagged individuals. The figure on the right shows the same statistics for the old individuals.

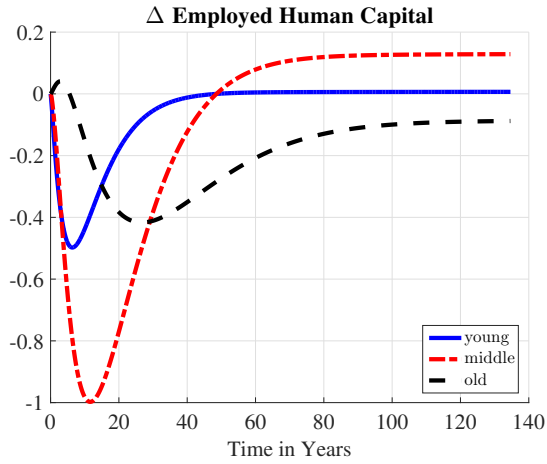
The increased churning through prison also has a sizeable impact on wage inequality through the human capital depreciation channel. Figure 16(a) shows this creates temporary wage inequality across cohorts and Figure 16(b) shows this creates a large and permanent increase in wage inequality for those with a prison record. At the peak of the transition, human capital of those with a prison flag drops almost 8% and only recovers to a 7% decline when comparing the new steady state to the old. These figures show that the policy widens the economic gap between the criminals and non-criminals substantially.

Figures 17(a) and 17(b) illustrates the magnitudes of the mechanisms we have discussed using the same counterfactual decomposition we explained in Section 6.2.

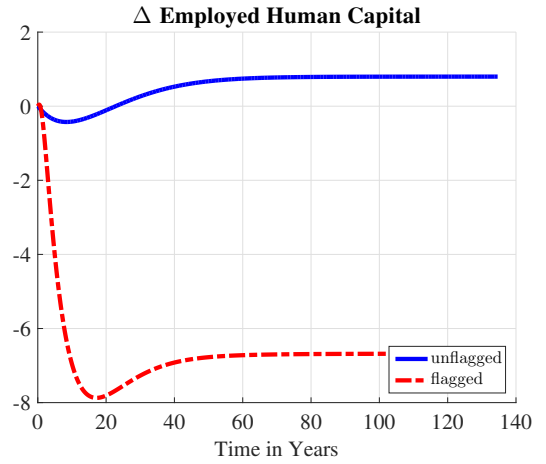
6.6 Role of the Model’s Assumptions

We now explore how our assumptions of the early life choice and criminal capital, relatively novel features of our theory, quantitatively contribute to these predictions of the model. Do we really need these and why? To do so, we ask how our results would look like if we omitted each of them individually, re-estimated the model to best fit U.S. data, and re-ran our transitional experiment.⁴⁶

⁴⁶More specifically, without prison flag, we re-estimate the model to target the same set of moments in the benchmark economy. The only difference is that without prison flag, we set the probability of being flagged after incarceration experience to 0. Without criminal capital we are left with seven parameters to be calibrated: crime

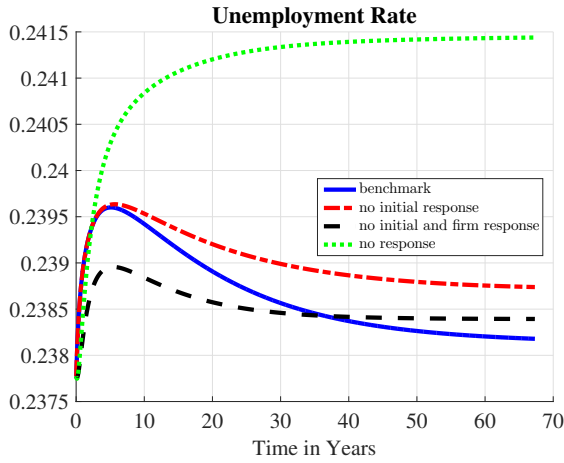


(a) Human Capital Employed-Lifecycle

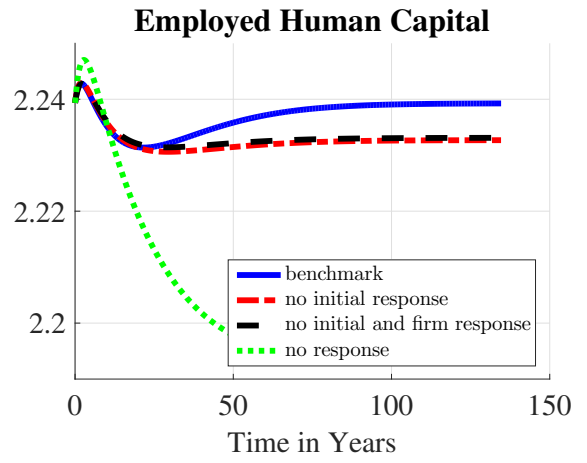


(b) Human Capital Employed-Types

Figure 16: Human Capital across Different Groups: The figures show the evolution of human capital for employed (a proxy for wages) for different individual groups. The figure on the left is across age dimension. The figure on the right compares the dynamics of the average human capital for non-flagged and flagged individuals. Both figures show percentage change from the initial steady-state level.



(a) Unemployment



(b) Human Capital

Figure 17: Labor Markets over Time: The figures show the decomposition of the evolution the unemployment rate and human capital of employed individuals. The unemployment rate is the ratio of the unemployed to the labor force. The solid line is the benchmark economy. The long dashed line is the economy when individuals keep their early life crime choices as in the first steady-state. The dashed line is the economy when firms keep the same job creation level and individuals keep their initial choices as in the first steady-state. Lastly, the dotted line is the economy when firms keep the same job creation level, individuals keep their initial and ex-post crime choices as in the first steady-state.

Figures 18(a) and 18(b) show the results. The prison flag has almost no impact on these aggregates, but this is something we learn from the model. We know that criminal records exist and are used in the labor market, but we learn that they have little impact on criminal behavior at least through the channels we have in the model. Criminal capital is something not observed in the data and does change the results, so we focus the following discussion on why we have it.

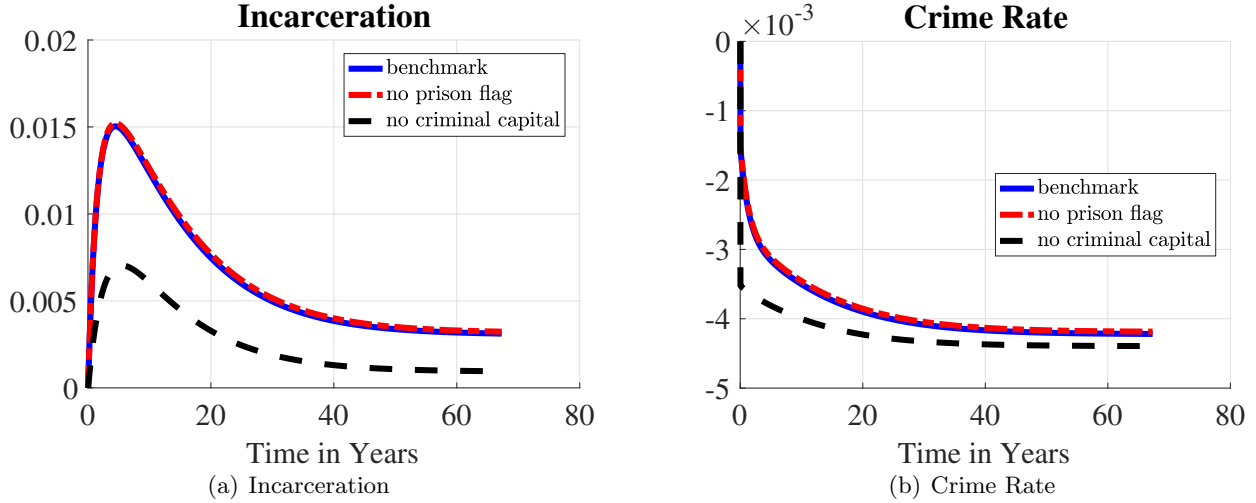


Figure 18: **Model Assumptions:** The figures compare the evolution of the economy in response to the policy change for different model assumptions. The solid line plots the benchmark economy, the long dashed line plots model without prison flag, and lastly the dashed line plots the model without criminal capital. In each case, parameters are re-calibrated to match certain moments of the data. See the text for a discussion of the re-calibration.

Criminal capital was added to the model to match a salient feature of criminal behavior: recidivism. The recidivism rate for released prisoners targeted in the calibration was 20% over 3 years after release in the early 1980s. When we re-estimate the model by dropping the criminal capital assumption, we can still generate a rise in incarceration- though at a much smaller magnitude- but we can no longer match the initial steady state recidivism rate observed in the data. We undershoot by 6%. Furthermore, recidivism does not rise along the transition. This is also contrary to the data. Using the Recidivism Among Released Prisoners ([United States Department of Justice. Office of Justice Programs. Bureau of Justice Statistics \(2011-03-08\)](#)), we calculate the average recidivism rate on *new* charges doubled from 17.8% in 1983 to 35% in a Florida sample from 2003

arrival rate, vacancy cost, job separation rate, human capital shock arrival rate for employed and unemployed, the human capital grid parameter and the curvature of early-life choice. As in the benchmark economy, we target incarceration rate for young and middle-age, employment-rate for young and middle-age, average unemployment duration in the whole population, the regression coefficients in equation 4.1 and the change in incarceration for young individuals over transition. The values of the parameters for each estimation is listed in the Appendix.

(Bhati (2010-07-29)).⁴⁷ See Section 12 of the online appendix for graphs of recidivism dynamics disaggregated by age in both the model and data. Both show an increase and flattening of the age profile of recidivism.

The key difference between the calibration with and without criminal capital is who commits crimes. With criminal capital, crimes are concentrated among a few individuals with a very high crime rate. Without it, crime is more spread across the population at lower rates for each individual. To achieve this, the calibration without criminal capital requires a much higher crime arrival rate. Interestingly, this increases the elasticity of crime to the policy change. When a larger distribution of people are committing crimes and the policy becomes tougher, the fall in crime is larger. This limits the model’s ability to match the increase in incarceration rate observed in the data.

In summary, the criminal capital assumption is important for two reasons. First, it allows the model to be more realistic by matching the concentration of crime among a small population with high recidivism rates that increases when the policy becomes more punitive, just as in the data. Second, matching these moments matters for the quantitative predictions of the model. The long-term impacts of the policy change can be quite different in the model with or without criminal capital. Further, getting the channel of who commits crime correct in the model is important for an array of policy considerations. For example, in the world with criminal capital and few criminals committing the majority of crime, the incapacitation effect of prison per capita is much larger than in a world where crime is widespread in the population.

6.7 Interaction with Other Social and Economic Trends

Our analysis thus far has considered a one-time, unilateral change in incarceration policy. In reality, it is likely that the policy changes were in response to changes in underlying criminality and that evolved concurrently. To this end, we consider two factors: secular increases in the reward to crime and a decline in low-skilled real wages. Our motivation to consider these particular factors is two-fold. First, there is direct evidence that the spread of cocaine and associated gangs raised criminal involvement in the late 1980’s through the mid 1990s. There is also a literature on “skill-biased” technical change providing theory and evidence that technological innovations left the low-skilled behind compared to rising real wages for skilled-labor. We would like to know how these theories

⁴⁷The recidivism rate increased to 27% in the 1994 iteration of the Recidivism Among Released Prisoners Series with the same design as the 1983 iteration. There is a version of these data for 2005, but we did not have access to the micro data and weren’t able to calculate the recidivism rate on *new* charges as would be consistent with our quantitative analysis. See the online Appendix for discussion of these datasets.

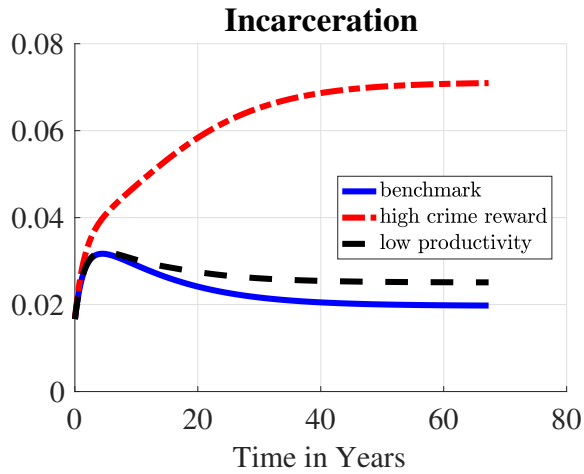
interact with punitive policy changes and whether they improve the model’s ability to account for the U.S. experience. The second purpose is that they provide comparative statics on the model. In particular, we argued in Section 5 that wage differentials do not explain much variation in the cross section. Our experiments here show the quantitative response of aggregate outcomes respond to changes in the mean of the wage distribution.

Our experiments are as follows. We model the increase in crime reward to match the four-fold increase in incarceration rate observed in U.S. data.⁴⁸ We model the decrease in wages as a linear decrease in productivity over the first 15 years to 25% lower than the initial steady state. Productivity remains at this lower value permanently from then on. Each experiment is run starting at the initial steady state in the benchmark economy and in conjunction with the same change in the probability of getting caught that we considered in the benchmark experiment.

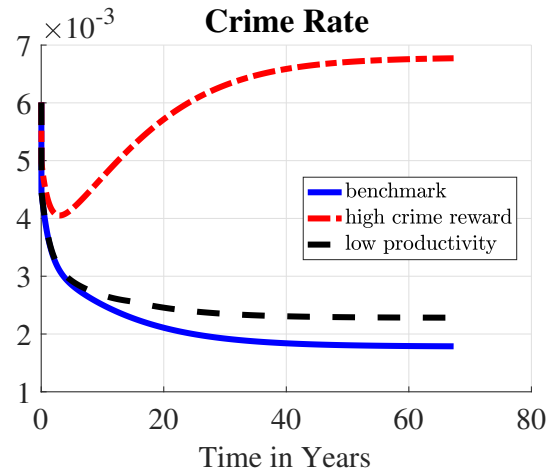
Figures 19(a) and 19(b) show, unsurprisingly, that higher crime rewards increase both crime and incarceration. While this change enables the model to replicate the magnitude of the increase in incarceration, it provides a counterfactual monotonic transition that contradicts the cohort evidence replicated by the benchmark model. Another departure from the benchmark is that crime follows a non-monotonic path. Similarly to the benchmark, the crime rate drops in the short run as individuals decrease their crime thresholds by responding to the higher punitive criminal system. Contrary to the benchmark, crime rises because higher criminal rewards result in future cohorts choosing a higher crime arrival rate in their early life choice. This implies that crime becomes more widespread in the society and contradicts empirical evidence that the opposite is the case. Both incarceration and crime rates also rise in comparison to the benchmark when labor productivity falls. The size of the impact is non-trivial. The empirically plausible fall in productivity delivers an increase in the population incarcerated at the new steady state by an entire percentage point, about 20% of the rise seen in the data.

Figures 19(c) - 19(d), plot the responses of the labor market. An open question is how much of the decline in low-skilled male employment relates to changes in criminal justice policy. These figures show that complementarities between changes in criminal justice policy and either decreasing real wages or increasing rewards to crime can generate a decline in employment of 3-5 percentage points, respectively. This highlights the potential quantitative importance of considering these trends in future study of this population.

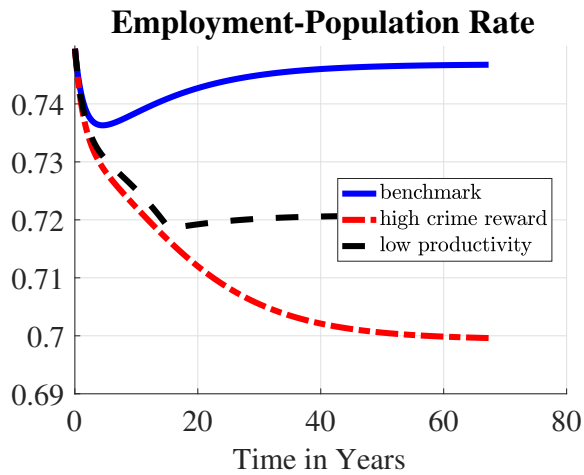
⁴⁸We achieve this by adjusting the mean of the log-normal distribution of the crime rewards, μ_κ . To match the quadrupling of the incarceration rate, we need to increase μ_κ from 0 to 0.7, which implies that the mean of the distribution almost doubles.



(a) Incarceration



(b) Crime Rate



(c) Employment



(d) Unemployment

Figure 19: Other Factors: The figures compare the evolution of the economy in response to the policy change and some other factors affecting the incarceration rate. The solid line plots the benchmark economy, the long dashed line plots the dynamics in response to the policy change and an increase in the mean of crime reward distribution, and lastly the dashed line plots the dynamics in response to the policy change and a gradual decrease in productivity.

7 Conclusion

We began this paper by arguing the importance of considering dynamics driven by criminal persistence in the evaluation of punitive incarceration policy changes. We presented our argument by incorporating the theory in both a simple and a rich dynamic model. We bolstered the empirical relevance of our theory by providing both cohort and changing cross-sectional evidence consistent with the theory’s predictions relying on criminal persistence.

To quantitatively evaluate policy changes, we developed a dynamic model grounded in the Beckerian theory of rational crime in which age, human capital, and employment all deter crime. We enhanced the model with additional channels: an early life choice and criminal capital developed with experience that each impact future crime opportunities as well as criminal records that segment labor markets. These channels enabled the model to replicate salient features of criminal behavior: high recidivism rates, even among the employed and old; and cohort dynamics after policy changes of the 1980s. Altogether we learned that luck in drawing a good crime opportunity is instrumental in the choice to enter crime and criminal capital, particularly that gained in prison, drives criminal persistence after youth. Adding things up, most crime is done by a few individuals with long criminal records for whom pecuniary factors provide little deterrence.

The main application of the theory analyzed the impact of increased use of punitive incarceration akin to policy changes in the 1980’s and arrived at three substantive conclusions. First, the change in incarceration policy on its own had a minor contribution to trends in low skilled labor markets and a more substantive contribution to aggregate incarceration and the decline in crime. Second, the transition after a policy change follows nuanced dynamics that can take several turns over subsequent decades. Increases in incarceration initially “cleanse” the population of the worst criminals, who are also the worst workers. Later, the additional individuals who cycle through the prison re-enter the population with even worse labor market prospects and higher criminality than before. Full deterrent effects are not realized until new cohorts are born under the new policy, choosing less crime and higher labor force attachment from early in life. Third, the theory uniquely predicts that crime becomes more concentrated in a smaller portion of the population who engage in crime more intensely. These changes in the extensive and intensive margins of crime mirrors empirical trends and provides further support to the validity of our theory. They also contribute to our result that increased punitive policy increases economic inequality within low-skilled populations. We spent ample time in the paper further discussing exactly what drives all three of these predictions both qualitatively and quantitatively.

Our findings uniquely emphasize that the issue of dynamics need to be addressed when approaching questions related to both criminal justice policy evaluation and criminal justice policy design. Policy evaluation relying on econometric inferences on policy experiments must consider that short-run effects of policy changes can run in directions that are opposite from long-run effects, as we have shown. Policy design must consider how the costs of sharp policy changes are borne unequally across cohorts. A specific prescription to be further researched is whether the announcement of increasing punitive policy in the future followed by a gradual implementation could improve welfare. This would allow a greater chance for agents to respond and potentially avoid a large increase in incarceration and its collateral effects in the short term.

References

- BAYER, P., R. HJALMARSSON, AND D. POZEN (2009): “Building criminal capital behind bars: Peer effects in juvenile corrections,” *The Quarterly Journal of Economics*, 124(1), 105–147.
- BECKER, G. S. (1968): “Crime and Punishment: An Economic Approach,” *The Journal of Political Economy*, 76(2), 169–217.
- BHATI, A. S. (2010-07-29): “Criminal Recidivism in a Large Cohort of Offenders Released from Prison in Florida, 2004-2008;” .
- BLUMSTEIN, A., AND A. J. BECK (1999): “Population growth in US prisons, 1980-1996,” *Crime and justice*, 26, 17–61.
- BLUMSTEIN, A., AND J. COHEN (1973): “Theory of the Stability of Punishment, A.,” *J. Crim. L. & Criminology*, 64, 198.
- BURDETT, K., R. LAGOS, AND R. WRIGHT (2003): “Crime, inequality, and unemployment,” *American Economic Review*, pp. 1764–1777.
- BUREAU OF LABOR STATISTICS, U.S DEPARTMENT OF LABOR (2014): “National Longitudinal Survey of Youth 1979 cohort, 1979-2012 (rounds 1-25),” .
- CAHALAN, M., AND L. PARSONS (Dec 1986): “Historical Corrections Statistics in the United States, 1850-1984e,” NCJ-102529.

- CARSON, E. A., AND J. MULAKO-WANGOTA (2017): “Bureau of Justice Statistics Tables,” data retrieved from Corrections Statistical Analysis Tool (CSAT)- Prisoners, www.bjs.gov.
- DURLAUF, S. N., S. NAVARRO, AND D. A. RIVERS (2010): “Understanding aggregate crime regressions,” *Journal of Econometrics*, 158(2), 306–317.
- EISEN, L.-B., AND J. CULLEN (2016): “Update: Changes in State Imprisonment Rates,” .
- ELDER JR, G. H. (1985): “Perspectives on the life course,” .
- ENGELHARDT, B. (2010): “The effect of employment frictions on crime,” *Journal of Labor Economics*, 28(3), 677–718.
- ENGELHARDT, B. E., G. ROCHETEAU, AND P. RUPERT (2008): “Crime and the labor market: A search model with optimal contracts,” *Journal of Public Economics*, 92(10-11), 1876–1891.
- FEDERAL BUREAU OF INVESTIGATION. (2017): “Crime in the United States,” data retrieved from Uniform Crime Reporting Statistics Data Tool, <https://www.ucrdatatool.gov/>.
- FELLA, G., AND G. GALLIPOLI (2014): “Education and crime over the life cycle,” *The Review of Economic Studies*, 81(4), 1484–1517.
- FREEMAN, R. B. (1999): “The economics of crime,” *Handbook of labor economics*, 3, 3529–3571.
- FU, C., AND K. I. WOLPIN (2017): “Structural Estimation of a Becker-Ehrlich Equilibrium Model of Crime: Allocating Police Across Cities to Reduce Crime,” *The Review of Economic Studies*, p. rdx068.
- GOTTFREDSON, M. R., AND T. HIRSCHI (1990): *A general theory of crime*. Stanford University Press.
- GUNER, N., C. RAUH, E. CAUCUTT, ET AL. (2017): “Is Marriage for White People? Incarceration and the Racial Marriage Divide,” in *2017 Meeting Papers*, no. 779. Society for Economic Dynamics.
- HUANG, C.-C., D. LAING, AND P. WANG (2004): “CRIME AND POVERTY: A SEARCH-THEORETIC APPROACH,” *International Economic Review*, 45(3), 909–938.
- İMROHOROĞLU, A., A. MERLO, AND P. RUPERT (2004): “WHAT ACCOUNTS FOR THE DECLINE IN CRIME?*,” *International Economic Review*, 45(3), 707–729.
- JAMES, N. (2013): *The federal prison population buildup: Overview, policy changes, issues, and options*, vol. 42937. Congressional Research Service.

- KITAO, S., L. LJUNGQVIST, AND T. J. SARGENT (2017): “A life-cycle model of trans-Atlantic employment experiences,” *Review of Economic Dynamics*, 25, 320–349.
- LAGAKOS, D., B. MOLL, T. PORZIO, N. QIAN, AND T. SCHOELLMAN (2016): “Life-cycle wage growth across countries. Forthcoming,” *Journal of Political Economy*.
- LAUB, J. H., AND R. J. SAMPSON (1993): “Turning points in the life course: Why change matters to the study of crime,” *Criminology*, 31(3), 301–325.
- LOCHNER, L. (2004): “Education, Work, And Crime: A Human Capital Approach,” *International Economic Review*, 45(3), 811–843.
- MCCRARY, J. (2010): “4 Dynamic perspectives on crime1,” *Handbook on the Economics of Crime*, p. 82.
- NAGIN, D., AND R. PATERNOSTER (2000): “Population heterogeneity and state dependence: State of the evidence and directions for future research,” *Journal of Quantitative Criminology*, 16(2), 117–144.
- NEAL, D., AND A. RICK (2014): “The prison boom and the lack of black progress after smith and welch,” Discussion paper, National Bureau of Economic Research.
- PETTIT, B. (2012): *Invisible Men: Mass Incarceration and the Myth of Black Progress*. Russell Sage Foundation.
- PFAFF, J. F. (2011): “The micro and macro causes of prison growth,” *Ga. St. UL Rev.*, 28, 1239.
- PISSARIDES, C. A. (1985): “Short-Run Equilibrium Dynamics of Unemployment, Vacancies and Real Wages,” *American Economic Review*, 75(4), 676–690.
- RAPHAEL, S., AND M. A. STOLL (2009): “Why Are So Many Americans in Prison?,” *Do Prisons Make Us Safer?: The Benefits and Costs of the Prison Boom*, p. 27.
- SAMPSON, R. J., AND J. H. LAUB (1990): “Crime and deviance over the life course: The salience of adult social bonds,” *American sociological review*, pp. 609–627.
- SCHULHOFER-WOHL, S., AND Y. C. YANG (2016): “Modeling the Evolution of Age and Cohort Effects,” in *Dynamic Demographic Analysis*, pp. 313–335. Springer.
- STEFFENSMEIER, D. J., E. A. ALLAN, M. D. HARER, AND C. STREIFEL (1989): “Age and the distribution of crime,” *American journal of Sociology*, 94(4), 803–831.

STEVEN RUGGLES, SARAH FLOOD, R. G. J. G. E. M. J. P., AND M. SOBEK. (2018): "IPUMS USA: Version 8.0 [dataset]," <https://doi.org/10.18128/D010.V8.0>.

UNITED STATES DEPARTMENT OF JUSTICE. OFFICE OF JUSTICE PROGRAMS. BUREAU OF JUSTICE STATISTICS (2011-03-08): "Recidivism Among Released Prisoners, 1983: [United States]," .