

Nonstationarity in Time Series of State Densities¹

Yoosoon Chang

*Department of Economics
Indiana University*

Chang Sik Kim

*Department of Economics
Sungkyunkwan University*

Joon Y. Park

*Department of Economics
Indiana University and Sungkyunkwan University*

Abstract

This paper proposes a new framework to analyze the nonstationarity in the time series of state densities, representing either cross-sectional or intra-period distributions of some underlying economic variables. We regard each state density as a realization of Hilbertian random variable, and use a functional time series model to fit a given time series of state densities. This allows us to explore various sources of the nonstationarity of such time series. The potential unit roots are identified through functional principal component analysis, and subsequently tested by the generalized eigenvalues of leading components of normalized estimated variance operator. The asymptotic null distribution of the test statistic is obtained and tabulated. We use the methodology developed in the paper to investigate the state densities given by the cross-sectional distributions of individual earnings and the intra-month distributions of stock returns. We find some clear evidence for the presence of strong persistency in their time series.

This version: January 2012

JEL Classification: C13, C32

Key words and phrases: time series of cross-sectional and intra-period distributions, state density, nonstationarity, unit root, functional principal component analysis.

¹We are grateful to Junhui Qian for many useful discussions, and to Richard Blundell, John Chao, Wolfgang Härdle, Hide Ichimura, Oliver Linton, Enno Mammen, and other participants at the fifth CIREQ time series conference at Montreal, Conference in Honor of Joel Horowitz at University College London, WIAS seminar at Humboldt University, Alexander von Humboldt Seminar at University of Mannheim, 2012 ASSA Meetings for helpful comments. Chang gratefully acknowledges the financial support from the NSF under Grant SES-0969146.

1. Introduction

In the paper, we investigate the nonstationarity of the time series of state densities, which are defined to represent either cross-sectional or intra-period distributions of some underlying economic variables. Examples of such distributions include, among many others, cross-sectional distributions of individual earnings and intra-period distributions of asset returns. Though not directly observable, the state densities may be easily estimated using cross-sectional or intra-period observations. In economic time series analysis, we routinely use the time series observations aggregated across cross-sections or averaged over some time periods. Clearly, we may extract more information on the dynamics of the underlying economic time series, if we study the entire cross-sectional or intra-period distributions rather than their representative values. Note that the observations aggregated cross-sectionally or averaged over time periods may simply be regarded as the means of the corresponding state distributions.

For our purpose, we introduce a novel framework. We regard each state density as a realization of Hilbertian random variable, and use a functional time series model to fit a given time series of state densities. Modeling state density as a functional random variable allows us to explore various sources of nonstationarity in state distribution including their higher moments such as variance, skewness and kurtosis. In contrast, the conventional unit root tests are applied to the cross-sectional aggregates and intra-period averages, and therefore, they only examine the nonstationarity existing in the means of state distributions. Our statistical theory of nonstationary functional time series in the paper builds upon the existing literature on the general statistical theory of stationary functional time series. See, e.g., Bosq (2000) for a detailed introduction to the subject. The reader is also referred to Park and Qian (2010) for the statistical theory of stationary regression with state densities defined similarly as in our paper.

Our testing procedure is simple and straightforward. The potential unit roots are identified through functional principal component analysis, and subsequently tested by the generalized eigenvalues of leading components of normalized estimated variance operator. The asymptotic distribution of our test statistic is free of nuisance parameters and dependent only upon the number of unit roots existing in the underlying time series of state densities. In parallel with the asymptotic distributions of the conventional unit root tests, it is represented by the eigenvalues of a matrix of functional of demeaned standard Brownian motion. The asymptotic critical values of the test are obtained and tabulated in the paper for the number of unit roots up to five. The finite sample performance of our test is evaluated by simulation. The test performs very well in terms of both finite sample size and power even for moderately large samples. The finite sample size becomes close to its nominal value and the finite sample power approaches to unity rather quickly as the sample size increases.

For the purpose of illustration, we use our model and methodology to analyze the nonstationarity in the time series of two different types of state distributions. In the first empirical application, we study the state distributions defined as the cross-sectional distributions of individual earnings, which are obtained from the cross-sectional observations of individual weekly earnings provided at monthly frequency by the Current Population Survey (CPS)

data set. In the second empirical application, we investigate the state distributions defined as the intra-month distributions of stock returns, which are obtained from the S&P 500 index returns at one-minute frequency. The sample sizes of their time series are 204 and 222 spanning the periods from January 1994 to December 2010 and from January 1992 to June 2010, respectively. Our test suggests that there are two unit roots in the cross-sectional distributions of individual earnings, whereas we have only one unit root in the intra-month distributions of stock returns.

The presence of unit roots in the time series of state distributions, of course, implies that the time series of their moments are generally nonstationary. In the paper, we propose a measure to represent the proportion of unit root component in each moment of state distributions. The measure, called the unit root proportion of a moment, takes value 0 if the moment is stationary, and 1 if the moment consists entirely of the unit root component of state distributions. For the cross-sectional distributions of individual earnings, the first four moments all have nonnegligible unit root proportions. In particular, the unit root proportions for the first two moments are substantial. It appears that the volatilities, as well as the means, of earnings distributions are quite persistent. On the other hand, for the intra-month distributions of stock returns, the moments have uneven unit root proportions. The unit root proportions of the odd moments are almost negligible, while those of the even moments are relatively much larger. They are, however, much smaller than those for the cross-sectional distributions of individual earnings.

The rest of the paper is organized as follows. Section 2 introduces the model and preliminary results necessary for the subsequent development of our theory and methodology. Our statistical procedure and asymptotic theory are presented in Section 3. To convey the main idea more effectively, here we assume that the state densities are directly observable. The effect of using estimated state densities on our statistical analysis is investigated and summarized in Section 4. There we show that the error incurred by the estimation of state densities are negligible and have no effect on our asymptotic theory under mild conditions. Section 5 includes two illustrative empirical applications of our model and methodology on the time series of cross-sectional distributions of individual earnings and intra-month distributions of stock returns. The fitted models obtained in Section 5 are used to perform our simulation study on the finite sample performance of our unit root test on the time series of state densities, which is reported in Section 6. Conclusion follows in Section 7. Finally, proofs are collected in Mathematical Appendix.

2. Model and Preliminaries

In the paper, we consider a sequence of density functions, which we denote by (f_t) . For each time $t = 1, 2, \dots$, we suppose that there is a distribution represented by probability density f_t , whose value at ordinate $s \in \mathbb{R}$ is denoted by $f_t(s)$. Throughout the paper, we let

$$w_t = f_t - \mathbb{E}f_t$$

denote a centered density function and treat (w_t) as functional data taking values in Hilbert space H , where we define H to be the set of functions on a compact subset K of \mathbb{R} that

have vanishing integrals and are square integrable, i.e.,

$$H = \left\{ w \mid \int_K w(s)ds = 0, \int_K w^2(s)ds < \infty \right\},$$

with inner product $\langle v, w \rangle = \int v(s)w(s)ds$ for $v, w \in H$. We assume that there exists an orthonormal basis (v_i) of H such that the i -th coordinate process

$$\langle v_i, w_t \rangle$$

has a unit root for $i = 1, \dots, M$, while it is stationary for all $i \geq M + 1$. By convention, we set $M = 0$ if all the coordinate processes are stationary.

Using the symbol \bigvee to denote span, we let

$$H_N = \bigvee_{i=1}^M v_i \quad \text{and} \quad H_S = \bigvee_{i=M+1}^{\infty} v_i,$$

so that $H = H_N \oplus H_S$. In what follows, H_N and H_S will respectively be referred to as the unit root and stationarity subspaces of H . We also let Π_N and Π_S be the projections on H_N and H_S , respectively. Moreover, we define

$$w_t^N = \Pi_N w_t \quad \text{and} \quad w_t^S = \Pi_S w_t.$$

Note that $\Pi_N + \Pi_S = 1$, so in particular we have $w_t = w_t^N + w_t^S$. Here and elsewhere in the paper, the identity operator on H is denoted simply by 1.

Assumption 2.1 For $u_t = \Delta w_t$, we let

$$u_t = \Phi(L)\varepsilon_t = \sum_{i=0}^{\infty} \Phi_i \varepsilon_{t-i},$$

where we assume that (a) $\sum_{i=1}^{\infty} i \|\Phi_i\| < \infty$, (b) $\Pi_N \Phi(1)$ is of rank M and $\Pi_S \Phi(1) = 0$, and (c) (ε_t) is an iid sequence with mean zero and variance $\Sigma > 0$, for which we have $\mathbb{E}\|\varepsilon_t\|^p < \infty$ with some $p \geq 4$.

The process (u_t) introduced in Assumption 2.1 is a generalization of the finite-dimensional linear process, and studied extensively in Bosq (2000) under stationarity assumption. The coefficients (Φ_i) used to define the process are linear operators in H and the innovation (ε_t) is a sequence of random elements in H . The main results in the paper hold under milder conditions than those in Assumption 2.1. For instance, we may allow (w_t) to be generated from martingale differences in place of iid sequences. The stronger conditions are invoked here to derive the explicit rates for some of our theoretical results.

In Assumption 2.1 and elsewhere in the paper, we use $\|\cdot\|$ to denote the usual Hilbert space norm, i.e., $\|v\|^2 = \langle v, v \rangle$ for a vector $v \in H$ and $\|A\| = \sup_v \|Av\|/\|v\|$ for any linear operator A on H . We follow the usual convention and denote by A' the adjoint of a linear operator A on H . If $A = A'$, the operator is called self-adjoint. Moreover, we write $A > 0$

and say that A is positive definite if and only if $\langle v, Av \rangle > 0$ for all nonzero $v \in H$. For any H -valued random element w , the expectation $\mathbb{E}w$ of w is more formally defined as a vector in H satisfying

$$\langle v, \mathbb{E}w \rangle = \mathbb{E}\langle v, w \rangle$$

for all $v \in H$, and the variance Σ of w is given by an operator for which

$$\mathbb{E}\langle v_i, w - \mathbb{E}w \rangle \langle v_j, w - \mathbb{E}w \rangle = \langle v_i, \Sigma v_j \rangle$$

for all $v_i, v_j \in H$. The reader is referred to, e.g., Bosq (2000) for a brief introduction to Hilbertian random variables and the definitions of their moments.

For the process (u_t) introduced in Assumption 2.1, we may write

$$u_t = \Phi(1)\varepsilon_t + (\bar{u}_{t-1} - \bar{u}_t),$$

where

$$\bar{u}_t = \bar{\Phi}(L)\varepsilon_t = \sum_{i=0}^{\infty} \bar{\Phi}_i \varepsilon_{t-i}$$

with $\bar{\Phi}_i = \sum_{j=i+1}^{\infty} \Phi_j$. This representation is widely known as the Beveridge-Nelson decomposition for finite-dimensional linear processes, and studied thoroughly by Phillips and Solo (1992). Due to condition (a), we have $\sum_{i=0}^{\infty} \|\bar{\Phi}_i\| < \infty$, and therefore the process (\bar{u}_t) is well defined.

It follows from condition (b) that

$$w_t^N = \Pi_N w_t = \Pi_N \Phi(1) \sum_{i=1}^t \varepsilon_i - \Pi_N \bar{u}_t$$

and

$$w_t^S = \Pi_S w_t = -\Pi_S \bar{u}_t$$

ignoring the initial values w_0 and \bar{u}_0 that are unimportant in the development of our asymptotic theory. Therefore, it is clear that (w_t^N) is an integrated process, while (w_t^S) is a stationary process. Thus far, we have assumed that the dimension M of unit roots in (w_t) is known. Of course, the unit root dimension M is unknown in practical applications. In the next section, we will explain how to statistically determine M , as well as how to estimate the unit root and stationarity subspaces H_N and H_S .

3. Statistical Procedure and Asymptotic Theory

In this section, we introduce our statistical procedures and develop their asymptotic theories.

3.1 Functional Principal Component Analysis

Our testing procedure is based on the functional principal component analysis for the unnormalized sample variance operator Q_T of (w_t) defined by

$$Q_T = \sum_{t=1}^T w_t \otimes w_t,$$

where T is the sample size. Moreover, we write

$$Q_T = T^2 Q_{NN}^T + T Q_{NS}^T + T Q_{SN}^T + T Q_{SS}^T, \quad (1)$$

where

$$\begin{aligned} Q_{NN}^T &= \frac{1}{T^2} \Pi_N \left(\sum_{t=1}^T w_t \otimes w_t \right) \Pi_N = \frac{1}{T^2} \sum_{t=1}^T w_t^N \otimes w_t^N \\ Q_{NS}^T &= \frac{1}{T} \Pi_N \left(\sum_{t=1}^T w_t \otimes w_t \right) \Pi_S = \frac{1}{T} \sum_{t=1}^T w_t^N \otimes w_t^S \\ Q_{SS}^T &= \frac{1}{T} \Pi_S \left(\sum_{t=1}^T w_t \otimes w_t \right) \Pi_S = \frac{1}{T} \sum_{t=1}^T w_t^S \otimes w_t^S, \end{aligned}$$

and Q_{SN}^T is the adjoint of Q_{NS}^T , i.e., $Q_{SN}^T = Q_{NS}^{T'}$.

To establish our asymptotic results on Q_T , it is necessary to introduce some new concepts and notations. For a sequence (A_T) of operators on H , we let $A_T \rightarrow_p A$ if $\|A_T - A\| \rightarrow_p 0$. Moreover, we define B to be Brownian motion on the unit root subspace H_N with variance operator Ω , if B takes values on H_N and if for any $v \in H_N$, $\langle v, B \rangle$ is Brownian motion with variance $\langle v, \Omega v \rangle$. Naturally, for a random sequence (B_T) taking values on H_N , we let $B_T \rightarrow_d B$, if for any $v \in H_N$, $\langle v, B_T \rangle \rightarrow_d \langle v, B \rangle$. It is straightforward to show that if B is Brownian motion on H_N then for any $(v_i), i = 1, \dots, M$, in H_N

$$(\langle v_1, B \rangle, \dots, \langle v_M, B \rangle)'$$

becomes an M -dimensional vector Brownian motion with covariance matrix having the (i, j) -th entry given by $\langle v_i, \Omega v_j \rangle$ for $i, j = 1, \dots, M$. Furthermore, if $B_T \rightarrow_d B$ then for any $(v_i), i = 1, \dots, M$, in H_N we have

$$(\langle v_1, B_T \rangle, \dots, \langle v_M, B_T \rangle)' \rightarrow_d (\langle v_1, B \rangle, \dots, \langle v_M, B \rangle)',$$

as can be readily shown using the Cramer-Wold device. Finally, for a sequence of operators (C_T) on H_N , we let $C_T \rightarrow_d C$ if $\langle v_1, C_T v_2 \rangle \rightarrow_d \langle v_1, C v_2 \rangle$ for an operator C on H_N jointly for any $(v_1, v_2) \in H_N \times H_N$.

Lemma 3.1 Let Assumption 2.1 hold. We have

$$Q_{NN}^T \rightarrow_d Q_{NN} = \int_0^1 (W \otimes W)(r) dr, \quad (2)$$

where W is Brownian motion on H_N with variance operator $\Pi_N \Phi(1) \Sigma \Phi(1)' \Pi_N$. Also, it follows that

$$Q_{SS}^T \rightarrow_p Q_{SS} = \Pi_S \left(\sum_{i=0}^{\infty} \bar{\Phi}_i \Sigma \bar{\Phi}_i' \right) \Pi_S. \quad (3)$$

Moreover, we have

$$Q_{NS}^T, Q_{SN}^T = O_p(1) \quad (4)$$

for all large T .

Lemma 3.1 establishes the limits and stochastic orders for each of the components appearing in our decomposition (1) of the unnormalized sample variance operator Q_T of (w_t) . The normalized sample variance operators Q_{NN}^T and Q_{SS}^T have well defined limits, and converge to their limits in distribution and probability respectively on the unit root and stationarity subspaces H_N and H_S . Note in particular that Q_{NN}^T has as its distributional limit a random operator represented by a functional of Brownian motion W on H_N , whereas the probability limit of Q_{SS}^T is given by the operator

$$Q_{SS} = \Pi_S \left(\mathbb{E}(w_t \otimes w_t) \right) \Pi_S$$

on H_S . The sample covariance operators Q_{NS}^T and Q_{SN}^T become negligible asymptotically and do not appear in our subsequent asymptotic results.

Now we define

$$(\lambda_i(Q_T), v_i(Q_T)), \quad i = 1, \dots, T,$$

to be the pairs of the eigenvalues and eigenvectors of Q_T , where we order $(\lambda_i(Q_T))$ so that $\lambda_1(Q_T) \geq \dots \geq \lambda_T(Q_T)$. Moreover, assuming $T > M$, we let

$$H_N^T = \bigvee_{i=1}^M v_i(Q_T),$$

and denote by Π_N^T the projection on H_N^T . The subspace H_N^T spanned by the eigenvectors corresponding to M largest eigenvalues of Q_T will be referred to as the sample unit root subspace. Finally, we define the projection on the sample stationarity subspace by $\Pi_S^T = 1 - \Pi_N^T$, so that we have $\Pi_N^T + \Pi_S^T = 1$ analogously as the relationship $\Pi_N + \Pi_S = 1$. The following proposition is an immediate consequence of Lemma 3.1.

Proposition 3.2 Under Assumption 2.1, we have

$$\Pi_N^T = \Pi_N + O_p(T^{-1}) \quad \text{and} \quad \Pi_S^T = \Pi_S + O_p(T^{-1})$$

for all large T .

Proposition 3.2 implies that the projections Π_N and Π_S on the unit root and stationarity subspaces H_N and H_S can be estimated consistently at rate T respectively by the projections Π_N^T and Π_S^T on the sample unit root and stationarity subspaces H_N^T and H_S^T .

In what follows, we let

$$(\lambda_i(Q_{NN}), v_i(Q_{NN})), \quad i = 1, \dots, M,$$

be the nonzero eigenvalues and their associated eigenvectors of Q_{NN} , which we order

$$\lambda_1(Q_{NN}) \geq \dots \geq \lambda_M(Q_{NN}).$$

Note that Q_{NN} is stochastic, and therefore, so are $((\lambda_i(Q_{NN}), v_i(Q_{NN})))$ for $i = 1, \dots, M$. Clearly, $(v_i(Q_{NN}))$, $i = 1, \dots, M$, span H_N . Though the set of vectors $(v_i(Q_{NN}))$ are given randomly by the realization of Brownian motion W , the space spanned by them is nonrandom and uniquely determined. On the other hand, we denote by

$$(\lambda_i(Q_{SS}), v_i(Q_{SS})), \quad i = 1, 2, \dots,$$

the nonzero eigenvalues and their associated eigenvectors of Q_{SS} , for which we assume

$$\lambda_1(Q_{SS}) \geq \lambda_2(Q_{SS}) \geq \dots.$$

Since Q_{SS} is the variance operator of $(\Pi_S w_t)$, it is positive semi-definite and nuclear, i.e., $\lambda_i(Q_{SS}) \geq 0$ for all i , and

$$\sum_{i=1}^{\infty} \lambda_i(Q_{SS}) < \infty.$$

In particular, $\lambda_i(Q_{SS}) \rightarrow 0$ as $i \rightarrow \infty$, and the origin is the limit point of the spectrum of Q_{SS} . The reader is referred to Bosq (2000, Theorem 1.7) for more details.

It can be deduced from Lemma 3.1 and Proposition 3.2 that

Theorem 3.3 Under Assumption 2.1, we have

$$(T^{-2}\lambda_i(Q_T), v_i(Q_T)) \rightarrow_d (\lambda_i(Q_{NN}), v_i(Q_{NN}))$$

jointly for $i = 1, \dots, M$, and

$$(T^{-1}\lambda_{M+i}(Q_T), v_{M+i}(Q_T)) \rightarrow_p (\lambda_i(Q_{SS}), v_i(Q_{SS}))$$

for $i = 1, 2, \dots$

In the stationarity subspace H_S , the eigenvectors and eigenvalues of the sample variance operator Q_T of (w_t) , if appropriately normalized, converge in probability to the corresponding population eigenvectors and eigenvalues. Following the convention made in Bosq (2000), the eigenvectors $(v_i(Q_{SS}))$ are identified only up to the spaces spanned by them. For instance, we let $v_i(Q_{SS})$ and $-v_i(Q_{SS})$ be identical for $i = 1, 2, \dots$. Likewise, if $\lambda_i(Q_{SS}) = \lambda_{i+j}(Q_{SS})$

for some $i \geq 1$ and $1 \leq j \leq J$, then $v_i(Q_{SS})$ and $v_{i+j}(Q_{SS})$, $j = 1, \dots, J$, are not individually identified and they denote any vectors spanning the eigen-subspace of $\lambda_i(Q_{SS})$. In the unit root subspace H_N , on the other hand, the eigenvectors and normalized eigenvalues of the sample variance operator converge in distribution, and their distributional limits are given by the distributions of eigenvalues and eigenvectors of some functionals of Brownian motion.

One immediate consequence of our results in Theorem 3.3 is that we may use the criterion

$$\Lambda_T = -T^{-2} \sum_{i=1}^M \lambda_i(Q_T) + c_T T^{-1}$$

to determine the dimension M of unit roots in (w_t) , where (c_T) is a numerical sequence such that $c_T \rightarrow \infty$ and $c_T T^{-1} \rightarrow 0$. In fact, if we set

$$\hat{M}_T = \underset{0 \leq M \leq M_{\max}}{\operatorname{argmin}} \Lambda_T \quad (5)$$

with some fixed number M_{\max} large enough to ensure $M \leq M_{\max}$,² then we may easily show following, e.g., Cheng and Phillips (2009), that \hat{M}_T is weakly consistent for M and $\mathbb{P}\{\hat{M}_T = M\} \rightarrow 1$. In the paper, however, we follow a more conventional approach based on a successive testing procedure similarly as in the testing procedure by Johansen (1988). Note that any of the existing procedures developed to analyze cointegrating rank are not directly applicable for our model, since it is infinite dimensional. Our new testing procedure is presented in Section 3.3 below.

3.2 Asymptotic Behavior of Coordinate Process

One of the most important implications of Proposition 3.2 is that we may regard $(v_i(Q_T))$, $i = 1, \dots, M$, asymptotically as vectors in the unit root subspace H_N . Indeed, it is straightforward to deduce from Proposition 3.2 that

Corollary 3.4 Under Assumption 2.1, we have

$$\begin{aligned} \max_{1 \leq t \leq T} |\langle \Pi_N^T v, w_t \rangle - \langle \Pi_N v, w_t \rangle| &= O_p(T^{-1/2}) \\ \max_{1 \leq t \leq T} |\langle \Pi_N^T v, \Delta w_t \rangle - \langle \Pi_N v, \Delta w_t \rangle| &= O_p(T^{-1+1/p}) \end{aligned}$$

for all large T , uniformly in all $v \in H$ such that $\|v\| = 1$.

We may well expect from Corollary 3.4 that the coordinate processes of (w_t) defined by $(v_i(Q_T))$ and $(\Pi_N v_i(Q_T))$, $i = 1, \dots, M$, yield the same asymptotics. Note that $v_i(Q_T) =$

²In practice, the choice of M_{\max} is not a difficult problem. It is often clearly suggested by the estimated spectrum of Q_T , which normally has several dominant eigenvalues. We may also rely on various methodologies of identifying dominant eigenvalues in the standard principal component analysis.

$\Pi_N^T v_i(Q_T)$, $i = 1, \dots, M$, since $(v_i(Q_T))$, $i = 1, \dots, M$, are in the sample unit root subspace H_N^T . The difference between $\langle v_i(Q_T), w_t \rangle$ and $\langle \Pi_N v_i(Q_T), w_t \rangle$, $i = 1, \dots, M$, vanishes completely as the sample size increases up to infinity. Needless to say, $(\Pi_N v_i(Q_T))$, $i = 1, \dots, M$, are vectors in the unit root subspace H_N , and we may therefore assume that $(v_i(Q_T))$, $i = 1, \dots, M$, are in H_N in our subsequent development of the asymptotics for nonstationary coordinate processes.

It should, however, be noted that $\langle v_i(Q_T), w_t \rangle$, $i = 1, \dots, M$, in general behave quite differently from unit root processes, even though we may regard $(v_i(Q_T))$, $i = 1, \dots, M$, asymptotically as vectors in the unit root subspace H_N . As shown in Theorem 3.3, $(v_i(Q_T))$, $i = 1, \dots, M$, do not converge to any fixed set of vectors and remain to be random in the limit. Therefore, their asymptotic behaviors are generally rather distinctive from those of the coordinate processes $\langle v_i, w_t \rangle$ defined by a fixed set of vectors (v_i) , $i = 1, \dots, M$, in H_N . For instance, we may easily deduce from Lemma 3.1 and Theorem 3.3 that

$$\begin{aligned} \frac{1}{T^2} \sum_{t=1}^T \langle v_i(Q_T), w_t \rangle^2 &= \langle v_i(Q_T), Q_{NN}^T v_i(Q_T) \rangle + O_p(T^{-1}) \\ &\rightarrow_d \langle v_i(Q_{NN}), Q_{NN} v_i(Q_{NN}) \rangle = \lambda_i(Q_{NN}) \end{aligned}$$

with $\lambda_i(Q_{NN})$ being the i -th largest eigenvalue of $\int_0^1 (W \otimes W)(r) dr$, whereas

$$\begin{aligned} \frac{1}{T^2} \sum_{t=1}^T \langle v_i, w_t \rangle^2 &= \langle v_i, Q_{NN}^T v_i \rangle + O_p(T^{-1}) \\ &\rightarrow_d \langle v_i, Q_{NN} v_i \rangle = \int_0^1 W_i^2(r) dr \end{aligned}$$

with $W_i = \langle v_i, W \rangle$. Unless $M = 1$, the two limit distributions are not identical.

We may now clearly see that the asymptotics of $\langle v_i(Q_T), w_t \rangle$ are different in general from those of $\langle v_i, w_t \rangle$ defined by a fixed set of vectors (v_i) , $i = 1, \dots, M$, in the unit root subspace H_N , though their sample moments have the same order of magnitudes in probability. In particular, $\langle v_i(Q_T), w_t \rangle$, $i = 1, \dots, M$, are not well defined unit root processes. To obtain unit root coordinate processes, we need to find a set of vectors in H_N^T that converge in probability to a fixed set of vectors in H_N , and use them to define coordinate processes. In fact, if we fix a set of vectors (\bar{v}_i) , $i = 1, \dots, M$, in H and project them on H_N^T using Π_N^T to obtain $(\Pi_N^T \bar{v}_i)$ and define

$$\langle \Pi_N^T \bar{v}_i, w_t \rangle, \quad i = 1, \dots, M,$$

then it follows immediately from Corollary 3.4 that

$$\max_{1 \leq t \leq T} |\langle \Pi_N^T \bar{v}_i, w_t \rangle - \langle \Pi_N \bar{v}_i, w_t \rangle| = O_p(T^{-1/2}) \quad (6)$$

$$\max_{1 \leq t \leq T} |\Delta \langle \Pi_N^T \bar{v}_i, w_t \rangle - \Delta \langle \Pi_N \bar{v}_i, w_t \rangle| = O_p(T^{-1+1/p}) \quad (7)$$

for all large T . Consequently, $\langle \Pi_N^T \bar{v}_i, w_t \rangle$ behave asymptotically as $\langle \Pi_N \bar{v}_i, w_t \rangle$, $i = 1, \dots, M$, which are well defined unit root processes.

As is well expected, we may test for the unit root hypothesis $H_0 : \alpha_i = 1$ in the regression

$$\langle \Pi_N^T \bar{v}_i, w_t \rangle = \alpha_i \langle \Pi_N^T \bar{v}_i, w_{t-1} \rangle + \epsilon_{it}$$

or

$$\langle \Pi_N^T \bar{v}_i, w_t \rangle = \alpha_i \langle \Pi_N^T \bar{v}_i, w_{t-1} \rangle + \sum_{j=1}^q \beta_{ij} \Delta \langle \Pi_N^T \bar{v}_i, w_{t-j} \rangle + \epsilon_{it}$$

for $i = 1, \dots, M$, using the conventional unit root tests such as the augmented Dickey-Fuller (ADF) and Phillips' tests, the details of which we refer to Stock (1994). In fact, it follows directly from (6) and (7) that the unit root tests based on $\langle \Pi_N^T \bar{v}_i, w_t \rangle$ have the same asymptotics as those of $\langle \Pi_N \bar{v}_i, w_t \rangle$, $i = 1, \dots, M$, which are well defined unit root processes yielding the usual unit root asymptotics. The conventional unit root tests applied to $\langle \Pi_N^T \bar{v}_i, w_t \rangle$, $i = 1, \dots, M$, are therefore valid asymptotically. However, the tests are not applicable, unless M is known. In particular, we may not use the tests to determine M . Besides, we expect the test results to be affected by the choice of vectors (\bar{v}_i) , $i = 1, \dots, M$, which has to be arbitrary, except for the simple case $M = 1$.

3.3 Test Statistic and Limit Distribution

To determine the dimension M of the unit root subspace H_N , we consider the test of the null hypothesis

$$H_0 : \dim(H_N) = M \tag{8}$$

against the alternative hypothesis

$$H_1 : \dim(H_N) \leq M - 1 \tag{9}$$

successively downward starting from $M = M_{\max}$, where M_{\max} is introduced earlier in (5). By convention, $M = 0$ implies that there is no unit root, and the unit root subspace H_N consists only of the origin. Our estimate for M is given by $M_{\min} - 1$, where M_{\min} is the smallest value of M for which the null hypothesis (8) is rejected in favor of the alternative hypothesis (9). Obviously, we may find the true value of M with asymptotic probability one, if we apply any consistent test in the successive manner as suggested here.

It is clear from Theorem 3.3 that we may use $(\lambda_i(Q_T))$ to determine the unit root dimension in (w_t) . As can be readily deduced from Theorem 3.3, $T^{-2}\lambda_i(Q_T)$ has a nondegenerate asymptotic distribution for $i = 1, \dots, M$, whereas it converges to zero in probability for all $i \geq M + 1$. Therefore, we may consider

$$\sigma_M^T = T^{-2}\lambda_M(Q_T) \tag{10}$$

to test the null hypothesis (8) against the alternative hypothesis (9) for $M = 1, 2, \dots$. It is clear that the test would be consistent, if we reject the null hypothesis in favor of the alternative hypothesis, when the test statistic σ_M^T in (10) takes a small value. Unfortunately, however, σ_M^T has limit null distribution that is generally dependent upon various nuisance

parameters, and cannot be used directly to test for the unit root dimension M without employing some resampling schemes to compute the critical values.³

To introduce a test statistic whose limit distribution is free of nuisance parameters, we first let (v_i) , $i = 1, \dots, M$, be an *arbitrary* set of vectors generating H_N . Then we define

$$z_t = (\langle v_1, w_t \rangle, \dots, \langle v_M, w_t \rangle)' \quad (11)$$

for $t = 1, \dots, T$. As we will show later, the choice of (v_i) , $i = 1, \dots, M$, is unimportant, and does not affect any of our subsequent developments. If we let $Q_M^T = Z_T' Z_T$ with $Z_T = (z_1, \dots, z_T)'$, it follows from Lemma 3.1 that

$$T^{-2} Q_M^T \rightarrow_d Q_M = \int_0^1 W_M(r) W_M(r)' dr, \quad (12)$$

where W_M is an M -dimensional vector Brownian motion with variance Ω_M , say, which is often referred to as the long run variance of (Δz_t) . The usual estimate for Ω_M is defined as

$$\Omega_M^T = \sum_{|i| \leq \ell} \varpi_\ell(i) \Gamma_T(i),$$

where ϖ_ℓ is a bounded weight function and Γ_T is the usual sample autocovariance function of (z_t) , i.e., $\Gamma_T(i) = T^{-1} \sum_t \Delta z_t \Delta z_{t-i}'$ for $|i| \leq \ell$, used to estimate the true autocovariance function Γ . The lag truncation number ℓ is set to increase as T .⁴

Now we define

$$(\lambda_i(Q_M^T, \Omega_M^T), v_i(Q_M^T, \Omega_M^T)), \quad i = 1, \dots, M,$$

to be the pairs of generalized eigenvalues and eigenvectors of Q_M^T with respect to the consistent estimate Ω_M^T of Ω_M . It follows immediately from (12) and continuous mapping theorem that

$$(T^{-2} \lambda_i(Q_M^T, \Omega_M^T), v_i(Q_M^T, \Omega_M^T)) \rightarrow_d (\lambda_i(Q_M, \Omega_M), v_i(Q_M, \Omega_M)) \quad (13)$$

jointly for $i = 1, \dots, M$, where

$$(\lambda_i(Q_M, \Omega_M), v_i(Q_M, \Omega_M)), \quad i = 1, \dots, M,$$

are the pairs of generalized eigenvalues and eigenvectors of Q_M with respect to Ω_M . Moreover, if we let

$$(\lambda_i(Q_M^*), v_i(Q_M^*)), \quad i = 1, \dots, M,$$

be the eigenvalue and eigenvector pairs of

$$Q_M^* = \int_0^1 W_M^*(r) W_M^*(r)' dr, \quad (14)$$

³Of course, it may be possible to use the test statistic σ_M^T in (10) with critical values computed from some resampling schemes such as bootstrap and subsampling. However, this will not be further discussed in the paper.

⁴There exists a large literature on the consistent estimation of Ω_M , for the introduction to which the reader is referred to, e.g., Andrews (1991). For all applications in the paper, we use the Parzen window with the Andrews' automatic bandwidth.

where $W_M^* = \Omega_M^{-1/2}W_M$ is the standard M -dimensional vector Brownian motion, i.e., M -dimensional vector Brownian motion with identity covariance matrix, then it can be easily seen that

$$\lambda_i(Q_M, \Omega_M) = \lambda_i(Q_M^*), \quad \Omega_M^{1/2}v_i(Q_M, \Omega_M) = v_i(Q_M^*), \quad (15)$$

for $i = 1, \dots, M$. In particular, we have

$$T^{-2}\lambda_i(Q_M^T, \Omega_M^T) \rightarrow_d \lambda_i(Q_M^*) \quad (16)$$

jointly for $i = 1, \dots, M$, due to (13) and (15). The distributions of $(\lambda_i(Q_M^*))$, $i = 1, \dots, M$, are free of any nuisance parameters, and can be tabulated by simulations.

It is important to note that the pairs of generalized eigenvalues and eigenvectors

$$(\lambda_i(Q_M^T, \Omega_M^T), v_i(Q_M^T, \Omega_M^T)), \quad (\lambda_i(Q_M, \Omega_M), v_i(Q_M, \Omega_M))$$

for $i = 1, \dots, M$ are determined uniquely regardless of the choice of (v_i) generating H_N , which we introduce in (11). To see this more clearly, we let (\bar{v}_i) be another set of vectors generating H_N . Moreover, we define $\bar{z}_t = (\langle \bar{v}_1, w_t \rangle, \dots, \langle \bar{v}_M, w_t \rangle)'$ for $t = 1, \dots, T$ and $\bar{Q}_M^T = \bar{Z}_T' \bar{Z}_T$ with $\bar{Z}_T = (\bar{z}_1, \dots, \bar{z}_T)'$. Then we have a nonsingular M -dimensional matrix U_M such that $\bar{z}_t = U_M z_t$. However, we have $\bar{Z}_T = Z_T U_M'$, and

$$T^{-2}\bar{Q}_M^T \rightarrow_d \bar{Q}_M = \int_0^1 \bar{W}_M(r) \bar{W}_M(r)' dr,$$

where $\bar{W}_M = U_M W_M$ is M -dimensional vector Brownian motion with variance $\bar{\Omega}_M = U_M \Omega_M U_M'$. We may also easily see that $\bar{\Omega}_M^T = U_M \Omega_M^T U_M'$ if we use the same estimator for Ω_M and $\bar{\Omega}_M$. Consequently, it follows readily that the generalized eigenvalues and eigenvectors of \bar{Q}_M^T and \bar{Q}_M with respect to $\bar{\Omega}_M^T$ and $\bar{\Omega}_M$ are the same respectively as those of Q_M^T and Q_M with respect to Ω_M^T and Ω_M .

The generalized eigenvalues $(\lambda_i(Q_M^T, \Omega_M^T))$, $i = 1, \dots, M$, are based on (z_t) in (11), which are not observable since it consists of coordinate processes given by a set of vectors (v_i) spanning H_N . Therefore, we consider

$$\tilde{z}_t = (\langle v_1(Q_T), w_t \rangle, \dots, \langle v_M(Q_T), w_t \rangle)' \quad (17)$$

for $t = 1, \dots, T$, in place of (z_t) in (11). Moreover, we define $\tilde{Q}_M^T = \tilde{Z}_T' \tilde{Z}_T$ with $\tilde{Z}_T = (\tilde{z}_1, \dots, \tilde{z}_T)'$, and

$$\tilde{\Omega}_M^T = \sum_{|i| \leq \ell} \varpi_\ell(i) \tilde{\Gamma}_T(i),$$

accordingly as Ω_M^T , where the autocovariance function $\Gamma_T(i)$ of (z_t) in Ω_M^T is replaced by that of (\tilde{z}_t) , $\tilde{\Gamma}_T(i) = T^{-1} \sum_t \Delta \tilde{z}_t \Delta \tilde{z}_{t-i}'$.

To test the null hypothesis (8) against the alternative hypothesis (9), we propose to use

$$\tau_M^T = T^{-2} \lambda_M \left(\tilde{Q}_M^T, \tilde{\Omega}_M^T \right). \quad (18)$$

For the test statistic τ_M^T , we have

Theorem 3.5 Let Assumption 2.1 hold. Under the null hypothesis (8), we have

$$\tau_M^T \rightarrow_d \lambda_M(Q_M^*).$$

Moreover, we have

$$\tau_M^T \rightarrow_p 0$$

under the alternative hypothesis (9).

Theorem 3.5 shows that the limit null distribution of our test statistic τ_M^T is given by the distribution of the smallest eigenvalue of the integrated product moment of M -dimensional standard vector Brownian motion on the unit interval, which was introduced earlier in (14). The limit distribution is easily derived from (16), once we show that the replacements of Q_M^T by \tilde{Q}_M^T and Ω_M^T by $\tilde{\Omega}_M^T$ have no effect on the limit distribution of the generalized eigenvalue $\lambda_M(Q_M^T, \Omega_M^T)$. This is well expected from Corollary 3.4, since (\tilde{z}_t) and (z_t) are uniformly close for $t = 1, \dots, T$, if we choose $v_i = \Pi_N v_i(Q_T)$, $i = 1, \dots, M$, in defining (z_t) .⁵ As discussed, the distribution of $\lambda_M(Q_M^*)$ is free of nuisance parameters, and depends only upon M . Therefore, the asymptotic critical values of our test statistic τ_M^T can be tabulated for each M . Theorem 3.5 also establishes that the test based on τ_M^T is consistent.⁶

It is possible to more specifically test the null hypothesis H_0 in (8) against the alternative hypothesis $H_A : \dim(H_N) = N$ for some $N < M$. In this case, it would clearly be more powerful to use the test statistic

$$\tau_{M,N}^T = T^{-2} \sum_{i=N+1}^M \lambda_i(\tilde{Q}_M^T, \tilde{\Omega}_M^T). \quad (19)$$

As in the proof of Theorem 3.5, we may easily show that

$$\tau_{M,N}^T \rightarrow_d \sum_{i=N+1}^M \lambda_i(Q_M^*),$$

under the null hypothesis H_0 , and that

$$\tau_{M,N}^T \rightarrow_p 0$$

under the alternative hypothesis H_A . The limit distributions of $\tau_{M,N}^T$ are also free of nuisance parameters and can be tabulated for various combinations of M and N .

⁵Recall that our test statistic τ_M^T is invariant with respect to the choice of (v_i) , and we may choose an arbitrary set of (v_i) as long as they span the unit root subspace H_N .

⁶The discriminatory power of τ_M^T is expected to be lower than that of σ_M^T , since $\sigma_M^T = O_p(T^{-1})$ under the alternative hypothesis (9). Certainly, this is the price we have to pay to make the statistic τ_M^T free of nuisance parameters in limit distribution.

3.4 Unit Root Moment Decomposition

By convention, we identify any square integrable function μ on a compact subset K of \mathbb{R} with $\mu - \int_K \mu(s)ds$, so that we may regard it as an element in H . Note that

$$\langle \mu, v \rangle = \left\langle \mu - \int_K \mu(s)ds, v \right\rangle$$

for any $v \in H$, if we define the inner product $\langle \cdot, \cdot \rangle$ in an extended Hilbert space including all square integrable functions on K . For any μ in the extended Hilbert space, we define the norm $\|\cdot\|$ as

$$\|\mu\|^2 = \left\langle \mu - \int_K \mu(s)ds, \mu - \int_K \mu(s)ds \right\rangle = \sum_{i=1}^{\infty} \langle \mu, v_i \rangle^2$$

for an orthonormal basis (v_i) of H .⁷

Now we consider

$$\mu_i(s) = s^i,$$

for $i = 1, 2, \dots$. Note that

$$\langle \mu_i, w_t \rangle = \langle \mu_i, f_t \rangle - \langle \mu_i, \mathbb{E}f_t \rangle = \langle \mu_i, f_t \rangle - \mathbb{E}\langle \mu_i, f_t \rangle$$

represents the random fluctuation of the i -th moment of the distribution given by probability density (f_t) . We may decompose μ_i as $\mu_i = \Pi_N \mu_i + \Pi_S \mu_i$, from which it follows that

$$\|\mu_i\|^2 = \|\Pi_N \mu_i\|^2 + \|\Pi_S \mu_i\|^2 = \sum_{j=1}^M \langle \mu_i, v_j \rangle^2 + \sum_{j=M+1}^{\infty} \langle \mu_i, v_j \rangle^2, \quad (20)$$

where (v_j) , $j = 1, 2, \dots$, is an orthonormal basis of H such that $(v_j)_{1 \leq j \leq M}$ and $(v_j)_{j \geq M+1}$ span H_N and H_S , respectively.

Clearly, we may employ the ratio

$$\pi_i = \frac{\|\Pi_N \mu_i\|}{\|\mu_i\|} = \frac{\sqrt{\sum_{j=1}^M \langle \mu_i, v_j \rangle^2}}{\sqrt{\sum_{j=1}^{\infty} \langle \mu_i, v_j \rangle^2}} \quad (21)$$

to measure the proportion of the component of μ_i lying in H_N . If, for instance, μ_i is entirely in H_N , we have $\pi_i = 1$. On the other hand, we have $\pi_i = 0$ if μ_i is entirely in H_S . In the paper, we use π_i to represent the proportion of unit root component in the i -th moment of probability densities (f_t) . The i -th moment of (f_t) has more dominant unit root component as π_i tends to unity, whereas it becomes more stationary as π_i approaches to zero. Of

⁷Strictly speaking, $\|\cdot\|$ introduced for the extended Hilbert space here by our convention is a pseudo-norm.

course, it is more difficult to predict the i -th moment of (f_t) if π_i is closer to unity. In contrast, the i -th moment of (f_t) is easier to predict if π_i is small. In what follows, we will refer to π_i simply as the *unit root proportion* of the i -th moment.

The unit root proportion π_i of the i -th moment defined in (21) is of course not directly applicable, since H_N and H_S are unknown. However, we may use its sample version

$$\pi_i^T = \frac{\sqrt{\frac{\sum_{j=1}^M \langle \mu_i, v_j(Q_T) \rangle^2}{T}}}{\sqrt{\sum_{j=1}^M \langle \mu_i, v_j(Q_T) \rangle^2}}, \quad (22)$$

and other notations are as defined in (21). The sample version π_i^T in (22) of π_i in (21) will be referred to as the *sample unit root proportion* of the i -th moment. We may readily show that the sample unit root proportion π_i^T is a consistent estimator for the original unit root proportion π_i . In fact, it follows immediately from Proposition 3.2 that

$$\pi_i^T = \pi_i + O_p(T^{-1})$$

for all $i = 1, 2, \dots$

4. Models with Estimated Densities

Usually, the state densities (f_t) are not directly observed and should therefore be estimated using the data, either cross-sectional or high frequency observations, that we assume to be available for each time period. Therefore, we denote by (\hat{f}_t) the estimated density functions and let

$$\hat{w}_t = \hat{f}_t - \frac{1}{T} \sum_{t=1}^T \hat{f}_t \quad (23)$$

be the demeaned density estimate for $t = 1, \dots, T$. It is well expected that the replacement of the original centered density (w_t) with the demeaned density estimate (\hat{w}_t) does not affect the asymptotic theory as long as the number of cross-sectional or high frequency observations available in each time period to estimate (\hat{f}_t) is large enough relative to the number T of time series observations. This was indeed shown by Park and Qian (2009) for a stationary functional regression model. In this section, we show that our asymptotic theories developed in the previous section continue to hold even when we use (\hat{w}_t) in the place of (w_t) . To develop subsequent asymptotic theories, we let $\Delta_t = \hat{f}_t - f_t$ for $t = 1, \dots, T$ and assume

Assumption 4.1 Let (a) $\sup_{t \geq 1} \|\Delta_t\| = O_p(1)$, and (b) $T^{-1} \sum_{t=1}^T \|\Delta_t\| \rightarrow_p 0$.

The conditions introduced in Assumption 4.1 appear to be very mild and satisfied widely in many potential applications. Clearly, condition (a) would hold in general, since both

(f_t) and (\hat{f}_t) are proper density functions. Moreover, condition (b) is expected to be met whenever the number N of observations that we use to estimate the state density at each period is sufficiently large relative to the sample size T for the time series of state density. In fact, if the standard second-order kernel is used with an optimal bandwidth to estimate the state densities, we would normally expect to have $\sup_{1 \leq t \leq T} \mathbb{E} \|\Delta_t\| = O(a_T/b_N)$ for some (a_T) and (b_N) such that $a_T \rightarrow \infty$ and $b_N \rightarrow \infty$ respectively as $T \rightarrow \infty$ and $N \rightarrow \infty$. It is well known that under very general regularity conditions we have $\mathbb{E} \|\Delta_t\| = O(N^{-2/5})$ for each t , if the state distributions are defined as cross-sectional distributions, and independent and identically distributed observations are available to estimate them for each period. The same result holds if the state distributions are given by intra-period distributions, as long as within each period the underlying economic variables can be regarded as stationary processes satisfying some general mixing conditions.⁸ This is shown in, e.g., Bosq (1998) and Hansen (2008).⁹

Now we redefine all sample statistics introduced in Section 3 to construct the feasible version of our unit root test statistic using (\hat{w}_t) introduced in (23), in place of (w_t) . As discussed, our testing procedure is based on the functional principal component analysis for the sample variance operator of (w_t) . Define

$$\hat{Q}_T = \sum_{t=1}^T \hat{w}_t \otimes \hat{w}_t, \quad (24)$$

which we may write similarly as in (1)

$$\hat{Q}_T = T^2 \hat{Q}_{NN}^T + T \hat{Q}_{NS}^T + T \hat{Q}_{SN}^T + T \hat{Q}_{SS}^T, \quad (25)$$

where \hat{Q}_{NN}^T , \hat{Q}_{NS}^T , \hat{Q}_{SN}^T and \hat{Q}_{SS}^T are defined in the same way as their counterpart components of Q_T given below (1) in Section 3, except that they are all sample product moments based on the demeaned density estimates (\hat{w}_t) . In what follows, we will refer to \hat{Q}_T as the unnormalized estimated variance operator of (w_t) .

In the subsequent development of our theory, we let

$$\left(\lambda_i(\hat{Q}_T), v_i(\hat{Q}_T) \right), \quad i = 1, \dots, T,$$

be the pairs of the eigenvalues and eigenvectors of \hat{Q}_T , where we order $\lambda_1(\hat{Q}_T) \geq \dots \geq \lambda_T(\hat{Q}_T)$. Moreover, for $T > M$, we use the eigenvectors $v_i(\hat{Q}_T)$ corresponding to the M largest eigenvalues $\lambda_i(\hat{Q}_T)$ of \hat{Q}_T to define

$$\hat{H}_N^T = \bigvee_{i=1}^M v_i(\hat{Q}_T).$$

We call \hat{H}_N^T the estimated unit root subspace and denote by $\hat{\Pi}_N^T$ the projection on \hat{H}_N^T . Finally, we let $\hat{\Pi}_S = 1 - \hat{\Pi}_N$, so that we have $\hat{\Pi}_N^T + \hat{\Pi}_S^T = 1$ analogously with the relationship $\Pi_N + \Pi_S = 1$.

⁸Such processes are often called locally stationary.

⁹The result holds under quite general conditions. For instance, Honda (2009) shows that we may even allow for processes with infinite variances.

Lemma 4.1 Let Assumptions 2.1 and 4.1 hold. We have

$$\hat{Q}_{NN}^T \rightarrow_d \underline{Q}_{NN} = \int_0^1 (\underline{W} \otimes \underline{W})(r) dr$$

with $\underline{W}(r) = W(r) - \int_0^1 W(s) ds$ and

$$\hat{Q}_{SS}^T \rightarrow_p Q_{SS},$$

where the limit Brownian motion W and operator Q_{SS} are defined in Lemma 3.1. Moreover, we have

$$\hat{Q}_{NS}^T, \hat{Q}_{SN}^T = O_p(1)$$

for all large T .

Lemma 4.1 presents the basic asymptotics for the estimated variance operator \hat{Q}_T of (w_t) . This corresponds to Lemma 3.1, where we establish the basic asymptotics for the sample variance operator Q_T of (w_t) . The estimated variance operator \hat{Q}_T differs from the sample variance operator Q_T in two aspects. First, the state density (f_t) used to define Q_T is replaced by the estimated state density (\hat{f}_t) for \hat{Q}_T . Second, \hat{Q}_T is defined with the sample mean $T^{-1} \sum_{t=1}^T \hat{f}_t$ instead of the expectation of state density $\mathbb{E}f_t$ used in the definition of Q_T . As can be clearly seen from the proof of Lemma 4.1, the replacement of (f_t) by (\hat{f}_t) becomes negligible and does not affect any of our asymptotic theory under our assumptions. This is true regardless of the stationarity/nonstationarity of the time series of state density. However, the use of the sample mean of the state density in place of its expectation has no asymptotic effect only for the stationary component of state density. For the nonstationary component, it yields different asymptotics. Note that the limit Brownian motion appeared in Lemma 3.1 is replaced by the demeaned Brownian motion in Lemma 4.1.

Theorem 4.2 Let Assumptions 2.1 and 4.1 hold. We have

$$\left(T^{-2} \lambda_i(\hat{Q}_T), v_i(\hat{Q}_T) \right) \rightarrow_d \left(\lambda_i(Q_{NN}), v_i(Q_{NN}) \right)$$

jointly for $i = 1, \dots, M$, and

$$\left(T^{-1} \lambda_{M+i}(\hat{Q}_T), v_{M+i}(\hat{Q}_T) \right) \rightarrow_p \left(\lambda_i(Q_{SS}), v_i(Q_{SS}) \right)$$

for $i = 1, 2, \dots$

The results in Theorem 4.2 are completely analogous to those in Theorem 3.3. The only difference in our asymptotic results in Theorem 4.2 is that we have \underline{Q}_{NN} defined with the demeaned Brownian motion \underline{W} instead of Q_{NN} defined with the undemeaned Brownian motion W . As discussed, the appearance of \underline{W} is due to the use of the sample mean of state density in lieu of its expectation.

Based on the asymptotic results in Lemma 4.1 and Theorem 4.2, we may construct a feasible version of our statistic τ_M^T defined in (18) to test for the existence of unit roots

in the time series of state density. The feasible test statistic, which we introduce below, is defined using the demeaned state density estimate (\hat{w}_t) and the estimated variance operator \hat{Q}_T of (w_t). Let

$$\hat{z}_t = \left(\langle v_1(\hat{Q}_T), \hat{w}_t \rangle, \dots, \langle v_M(\hat{Q}_T), \hat{w}_t \rangle \right)' \quad (26)$$

for $t = 1, \dots, T$, similarly as (\tilde{z}_t) in (17), and define $\hat{Z}_T = (\hat{z}_1, \dots, \hat{z}_T)'$ and

$$\hat{Q}_M^T = \hat{Z}_T' \hat{Z}_T, \quad \hat{\Omega}_M^T = \sum_{|i| \leq \ell} \varpi_\ell(i) \hat{\Gamma}_T(i), \quad (27)$$

where $\hat{\Gamma}_T(i)$ is the sample autocovariance function of (\hat{z}_t), viz., $\hat{\Gamma}_T(i) = T^{-1} \sum_t \Delta \hat{z}_t \Delta \hat{z}_{t-i}'$. Moreover, similarly as before, we define $\lambda_M(\hat{Q}_M^T, \hat{\Omega}_M^T)$ to be the smallest generalized eigenvalue of \hat{Q}_M^T with respect to $\hat{\Omega}_M^T$. Our feasible version $\hat{\tau}_M^T$ of the test statistic τ_M^T is now given by

$$\hat{\tau}_M^T = T^{-2} \lambda_M(\hat{Q}_M^T, \hat{\Omega}_M^T), \quad (28)$$

which corresponds to τ_M^T in (18).

To effectively present the asymptotics of the feasible test statistic $\hat{\tau}_M^T$, it is necessary to introduce some additional notations. In parallel with Q_M^* defined in (14), we define

$$\underline{Q}_M^* = \int_0^1 \underline{W}_M^*(r) \underline{W}_M^*(r)' dr \quad (29)$$

with $\underline{W}_M^*(r) = W_M^*(r) - \int_0^1 W_M^*(s) ds$, where W_M^* is the standard M -dimensional vector Brownian motion introduced earlier in Section 3. Now we have

Theorem 4.3 Let Assumptions 2.1 and 4.1 hold. Under the null hypothesis (8), we have

$$\hat{\tau}_M^T \rightarrow_d \lambda_M(\underline{Q}_M^*).$$

Moreover, we have

$$\hat{\tau}_M^T \rightarrow_p 0$$

under the alternative hypothesis (9).

Theorem 4.3 shows that the limit distribution of the feasible test statistic $\hat{\tau}_M^T$ is given by the distribution of the smallest eigenvalue of the integrated product moment of the demeaned M -dimensional standard vector Brownian motion on the unit interval, which is defined in (29). Given the limit distribution of τ_M^T in Theorem 3.5, this is well predicted from our earlier results in Lemma 4.1 and Theorem 4.2. Theorem 4.3 also establishes that the test based on the feasible statistic $\hat{\tau}_M^T$ is consistent as was the case for our original test. The consistency is therefore unaffected by using estimated densities and demeaned density estimates of state distributions.

Clearly, the limit null distribution of the test statistic $\hat{\tau}_M^T$ is free of nuisance parameters and can be obtained through simulation for each M . In Table 1, we tabulate the simulated critical values for the 1%, 5% and 10% tests based on $\hat{\tau}_M^T$ for the values of $M = 1, \dots, 5$.

The reported critical values are obtained by simulating the integrated product moment of the demeaned M -dimensional standard vector Brownian motion on the unit interval in (29). For the simulation, the Brownian motion is approximated by the standardized partial sum of mean zero i.i.d. normal random variates with sample size 10,000. The actual critical values are computed using 100,000 iterations.

Table 1: Critical Values of the Test Statistic $\hat{\tau}_M^T$

M	1	2	3	4	5
1%	0.0248	0.0163	0.0123	0.0100	0.0084
5%	0.0365	0.0215	0.0156	0.0122	0.0101
10%	0.0459	0.0254	0.0177	0.0136	0.0111

As is well expected, the critical values of the tests based on the statistic $\hat{\tau}_M^T$ decrease as M increases. Recall that the limit null distribution of $\hat{\tau}_M^T$ is given by the smallest eigenvalue of the integrated product moments of the demeaned M -dimensional vector Brownian motion.

Once we obtain the estimated unit root subspace \hat{H}_N^T , which is generated by \hat{M}_T -eigenvectors given by $v_i(\hat{Q}_T)$, $i = 1, \dots, \hat{M}_T$, the unit root proportion π_i of the i -th moment introduced in (21) can be consistently estimated by

$$\hat{\pi}_i^T = \frac{\sum_{j=1}^{\hat{M}_T} \langle \mu_i, v_j(\hat{Q}_T) \rangle^2}{\sum_{j=1}^{\hat{M}_T} \langle \mu_i, v_j(\hat{Q}_T) \rangle^2}, \quad (30)$$

which will be referred to as the estimated unit root proportion of the i -th moment. Under our assumptions, it can indeed be readily deduced from our earlier results that $\hat{\pi}_i^T = \pi_i + o_p(1)$ for all $i = 1, 2, \dots$

5. Empirical Applications

To demonstrate the empirical relevancy of our model, we present two empirical applications. In these applications, we show how to define and estimate the state densities, and test for unit roots in the time series of state densities. As discussed, the state densities represent the intra-period or cross-sectional distributions and we use the intra-period or cross-sectional observations to estimate them. For the actual estimation of the state densities, we use the Gaussian kernel with the standard optimal bandwidth suggested by Silverman. To analyze the nonstationarity of the time series of state densities, we use our statistic developed in the paper to test the null hypothesis (8) against the alternative hypothesis (9). To determine the dimension of the unit root space, we apply the test successively downward starting from

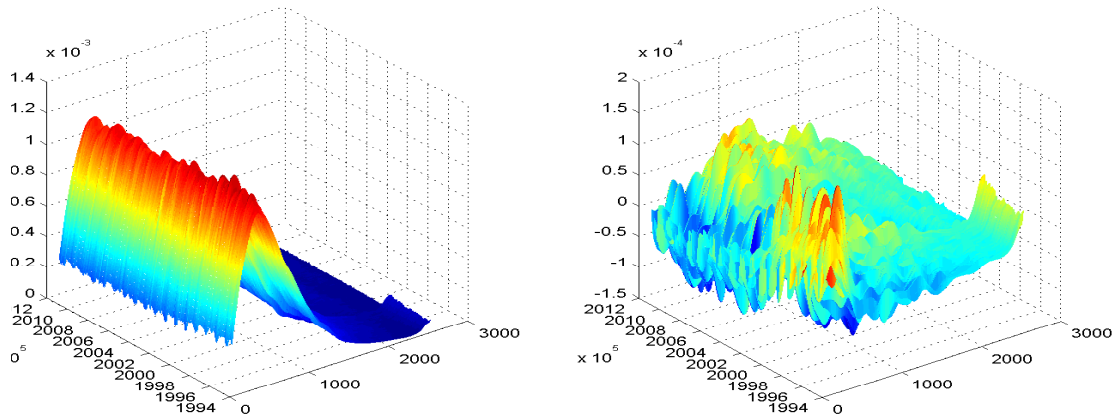


Figure 1: Individual Earnings Distributions - Undemeaned and Demeaned Densities

$M = M_{\max}$ with $M_{\max} = 5$.¹⁰ Once we determine the dimension of the unit root space and estimate the unit root space, the unit root proportion is computed for the first four moments. As discussed, the unit root proportion provides the proportion of nonstationary fluctuation in the moment of state distribution.

For the representation of functions in our Hilbert space as numerical vectors, we use a Daubechies wavelet basis. Because wavelets are spatially varying orthonormal bases with two parameters, i.e., scale and translation, they provide more flexibilities in fitting the state densities in our applications, some of which have severe asymmetry and time-varying support. In fact, the wavelet basis in general yields a much better fit than the trigonometric basis. The Daubechies wavelet is implemented with 1037 basis functions. The data sets we use in our empirical applications have either a censoring problem or extreme outliers. To avoid their undesirable effects on the estimation of state density, we truncate some of the cross-sectional or intra-period observations at the boundaries.¹¹

5.1 Cross-Sectional Distributions of Individual Earnings

For the first empirical application, we consider the time series of cross-sectional distributions of individual earnings. The cross-sectional observations of individual weekly earnings are obtained at monthly frequency from the Current Population Survey (CPS) data set. The individual weekly earnings are deflated by consumer price index with base year 2005. The

¹⁰In determining M_{\max} , we may use various rules that are commonly employed to identify dominant eigenvalues in the principal component analysis. For example, we can retain eigenvectors with eigenvalues greater than the average of all eigenvalues, or choose the eigenvectors needed to explain up to some fixed proportion of the variation in the data.

¹¹Indeed, our empirical results are not very sensitive to the presence of censored observations and outliers as long as we use a wavelet basis. In particular, all our empirical results do not change qualitatively if all cross-sectional or intra-period observations are used without truncation. In contrast, they become somewhat sensitive to censored observations and outliers if we use trigonometric basis.

data set provides 204 time series observations spanning from January 1994 to December 2010 at monthly frequency, and the number of cross-sectional observations in the data set for each month ranges from 12,323 to 15,700. For confidentiality reasons, individual earnings are topcoded above a certain level. In our empirical analysis, we drop all topcoded individual earnings as well as zero earnings as in Liu (2011) and Shin and Solon (2011).¹² Figure 1 shows the time series of the estimated densities for cross-sectional distributions of individual earnings, undemeaned and demeaned, respectively in the left and right panels. We may clearly see that the distributions change over time and that there exists some evidence of nonstationarity in the time series of cross-sectional distributions of individual earnings.

To investigate the unit root dimension in the time series of cross-sectional distributions of individual earnings, we use the feasible statistic $\hat{\tau}_M^T$ in (28) to test for the null hypothesis (8) against the alternative hypothesis (9) with $M = 1, \dots, 5$. The test results are presented below in Table 2. Our test, strongly and unambiguously, rejects the null hypothesis (8)

Table 2: Test Results for Dimension of Unit Root Space

M	1	2	3	4	5
$\hat{\tau}_M^T$	0.0746	0.0383	0.0079	0.0062	0.0040

against the alternative hypothesis (9) successively for $M = 5, 4, 3$. Clearly, however, the test cannot reject the null hypothesis (8) in favor of the alternative hypothesis (9) for $M = 2$. Therefore, we are led to conclude that there exists two-dimensional unit root, and set $\hat{M}_T = 2$, in the time series of cross-sectional distributions of individual earnings. It is also strongly supported by the scree plot of the eigenvalues of the estimated variance operator of the demeaned state densities presented in Figure 2. The magnitudes of the first two eigenvalues are substantially larger than the others, and we can clearly see that the eigenvalues decreases slowly from the third largest one.

Now we compute as in (30) with $\hat{M}_T = 2$ the estimates $\hat{\pi}_i^T$ of the unit root proportions π_i^T defined in (22) for the first four moments, based on the estimated nonstationarity space which we obtain for the time series of cross-sectional distributions of individual earnings. We summarize the results below in Table 3.

Table 3: Estimated Unit Root Proportions in Moments

$\hat{\pi}_1^T$	$\hat{\pi}_2^T$	$\hat{\pi}_3^T$	$\hat{\pi}_4^T$
0.5261	0.3420	0.2462	0.2013

It appears that the unit root proportions for the first four moments are all nonnegligibly large. In particular, the unit root proportions for the first two moments are quite substantial.

¹²It is possible to impute topcoded individual earnings as a fixed multiple above the topcode threshold as in Lemieux (2006) and Autor, Katz, and Kearney (2008).

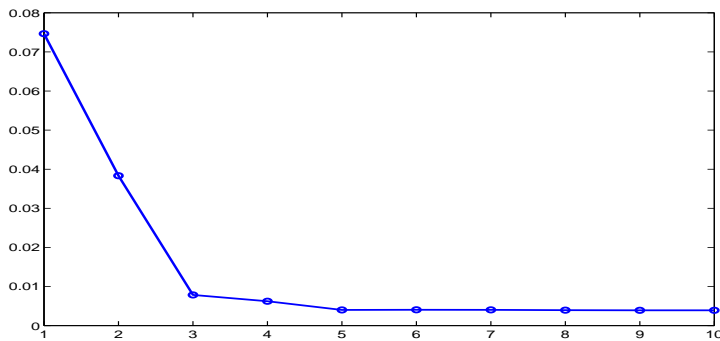


Figure 2: Scree Plot of Eigenvalues - Individual Earnings

The presence of a substantial unit root proportion in the second moment of the cross-sectional distribution of individual earnings seems to be particularly interesting. Recently, the time series analysis of changes in the volatilities of individual earnings and income have drawn much attention. See, e.g., Dynan, Elmendorf, and Sichel (2008), Barth, Bryson, Davis, and Freeman (2010) and Shin and Solon (2011). Nonstationarity in the time series of cross-sectional distributions of individual earnings would certainly make their volatilities more persistent, as evidenced extensively in the existing literature.

5.2 Intra-Month Distributions of Stock Returns

For the second empirical application, we consider the time series of intra-month distributions of stock returns. For each month during the period from January 1992 to June 2010, we use the S&P 500 index returns at one-minute frequency to estimate 222 densities for the intra-month distributions. The one-minute returns of S&P 500 index are obtained from Tick Data Inc. The number of intra-month observations available for each month varies from 7211 to 9177, except for September 2001, for which we only have 5982 observations.¹³ Figure 3 shows the time series of the estimated densities for intra-month distributions of the S&P 500 index returns, undemeaned and demeaned, respectively in the left and right panels. The intra-month observations are truncated at 0.50% and 99.5% percentiles before we estimate the state densities. It can be clearly seen that the mean locations and volatility levels, in particular, of intra-month return distributions vary with time. We may also see some evidence of nonstationarity in the time series of intra-month return distributions.

To determine the unit root dimension and check the existence of nonstationarity in the time series of intra-month S&P 500 return distributions, we test using the feasible statistic $\hat{\tau}_M^T$ defined in (28) for the null hypothesis (8) against the alternative hypothesis (9) with $M = 1, \dots, 5$. The test results are summarized in Table 4 below.

Our test successively rejects the null hypothesis (8) against the alternative hypothesis (9) for $M = 5, 4, 3, 2$. However, at 5% level, the test cannot reject the null hypothesis (8) in

¹³To avoid the micro-structure noise, we also use the five-minute observations to estimate the intra-month observations. Our empirical results are, however, virtually unchanged.

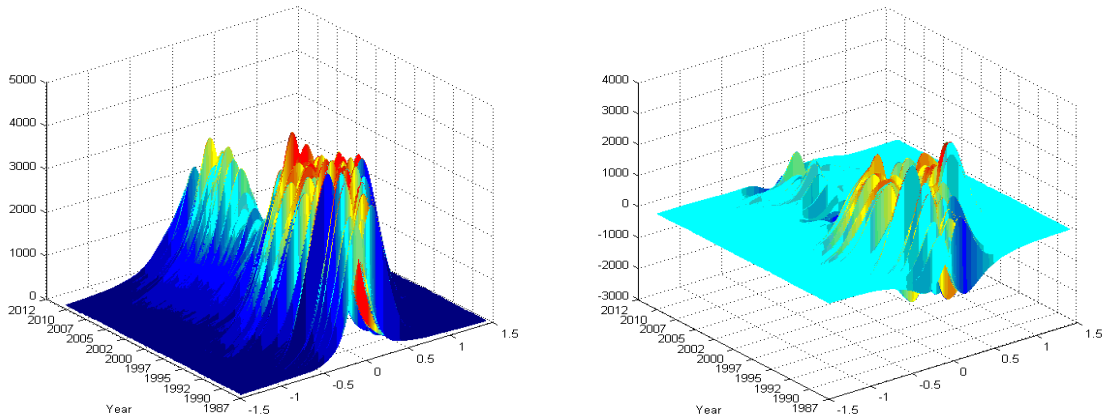


Figure 3: Intra-Month Return Distributions - Undemeaned and Demeaned Densities

Table 4: Test Results for Dimension of Unit Root Space

M	1	2	3	4	5
$\hat{\tau}_M^T$	0.0421	0.0139	0.0118	0.0103	0.0095

favor of the alternative hypothesis (9) for $M = 1$. Our test result implies that there exists one-dimensional unit root, i.e., $\hat{M}_T = 1$, in the time series of intra-month S&P 500 return distributions. The scree plot of the eigenvalues of the estimated variance operator of the state densities presented in Figure 4 also strongly supports the presence of one dimensional unit root. The magnitude of the first eigenvalue is distinctively larger than all the other eigenvalues.

Finally, we compute as in (30) with $\hat{M}_T = 1$ the estimates $\hat{\pi}_i^T$ of the unit root proportions π_i^T defined in (22) for the first four moments, presuming that we have one-dimensional unit root in the time series of intra-month S&P 500 return distributions. The results are presented below in Table 5.

Table 5: Estimated Unit Root Proportions in Moments

$\hat{\pi}_1^T$	$\hat{\pi}_2^T$	$\hat{\pi}_3^T$	$\hat{\pi}_4^T$
0.0066	0.0826	0.0008	0.0269

The unit root proportions are in general small for all of the first four moments. This implies that the nonstationarity in the time series of intra-month S&P 500 return distributions is not concentrated in the first four moments. This is in contrast with our first empirical application, where we study the time series of cross-sectional distributions of individual earnings. However, the nonstationarity in the time series of intra-month S&P 500 return

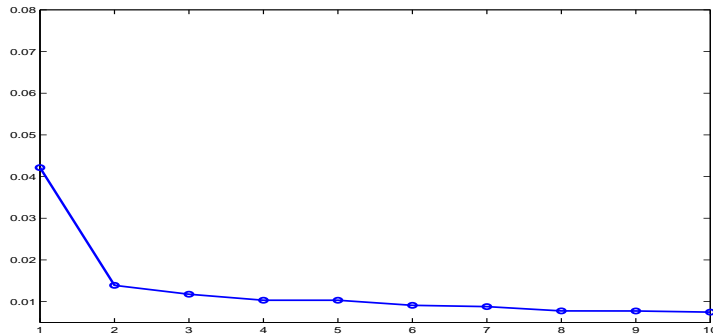


Figure 4: Scree Plot of Eigenvalues - Intra-Month Returns

distributions is relatively more concentrated in the second and fourth moments, with the unit root proportion of the second moment being the largest. The unit root proportion of the first and third moments are almost negligible, and it appears that nonstationarity does not exist in the first and third moments of the time series of intra-month S&P 500 return distributions. This is well expected, since for many financial time series strong persistency is observed mainly in volatility and kurtosis.

6. Monte Carlo Simulation

In this section, we perform a simulation to investigate the finite sample performance of the statistic τ_M^T introduced in (18) to test for the null hypothesis (8) against the alternative hypothesis (9). For the simulation, we generate the data using the models that approximate as closely as possible the estimated models we obtained from our empirical applications in the previous section. This is to make our simulation more realistic and practically more relevant. Needless to say, the performance of our test is expected to be varying depending upon data generating processes. We assume that the state densities are observable, and therefore, our simulation would not provide any information on the effect of estimating unobserved state densities. The numbers of observations N we use to estimate the state densities in our empirical applications are quite large compared to the sample sizes T for the time series of state density. The approximation error due to the estimation of state densities should therefore be small and unimportant, if not totally negligible. Several choices of T between 100 and 500 are considered. Recall that we have $T = 204$ and $T = 222$ for each of the two empirical applications reported in the previous section. In all cases we employ our test with 5% significance level, and all the reported results are based on 5,000 iterations.

In our simulation, we directly generate the centered state density (w_t), instead of the original state density (f_t). This of course causes no loss in generality, since we use the demeaned original state density $f_t - T^{-1} \sum_{t=1}^T f_t$ that is identical to the demeaned centered

state density $w_t - T^{-1} \sum_{t=1}^T w_t$. To generate our simulation sample (w_t) , we let

$$w_t = \sum_{i=1}^I c_{it} v_i, \quad (31)$$

where (c_{it}) , $i = 1, \dots, I$ and $t = 1, \dots, T$, are scalar stochastic processes and (v_i) , $i = 1, \dots, I$, nonrandom orthonormal vectors in H , which are specified more specifically below. Clearly, we have $c_{it} = \langle v_i, w_t \rangle$, and (c_{it}) becomes the i -th coordinate process of (w_t) for $i = 1, \dots, I$. Note that the simulation sample (w_t) is generated from the I -dimensional subspace of H spanned by (v_i) , $i = 1, \dots, I$. We set $I = T$, and let (v_i) in (31) be the orthonormal eigenvectors associated with nonzero eigenvalues of the estimated variance operator of (w_t) obtained in our empirical applications. Note that for a sample (w_t) of size T we only have T eigenvectors (v_i) associated with nonzero eigenvalues of the sample variance operator.

The coordinate processes (c_{it}) in (31) are also specified similarly as the estimated coordinate processes obtained from our empirical applications. For both of our empirical applications, all information order selection criteria including AIC and BIC applied to the estimated coordinate processes yield simple AR(1) and AR(2) models respectively for the stationary and nonstationary coordinate processes.¹⁴ Accordingly, we let

$$(c_{it} - \alpha_i c_{i,t-1}) = \beta_i (c_{i,t-1} - \alpha_i c_{i,t-2}) + \eta_{it} \quad (32)$$

for $i = 1, \dots, M$, and

$$c_{it} = \alpha_i c_{i,t-1} + \eta_{it} \quad (33)$$

for $i = M + 1, \dots, I$, where (η_{it}) are independent normal random variates with mean zero and variance (σ_i^2) for $i = 1, \dots, I$. The parameter values for (β_i) , $i = 1, \dots, M$, (α_i) , $i = M + 1, \dots, I$, and (σ_i^2) , $i = 1, \dots, I$, are all set to be our estimates for the estimated coordinate processes of our empirical applications. The estimates for (β_i) are obtained with the restriction $\alpha_i = 1$ imposed for $i = 1, \dots, M$. Respectively for our first and second empirical models, we set $M = 2$ and $M = 1$ in (32) and (33).

6.1 Empirical Model of Individual Earnings

The simulation results for our first empirical model on the cross-sectional distributions of individual earnings are tabulated in Table 6. We denote by M_0 the number of unit roots in our simulated samples (w_t) to distinguish it from the hypothesized number M of unit roots for the test of the null hypothesis (8) against the alternative hypothesis (9) based on τ_M^T . Our simulation samples for the first empirical model are obtained from the coordinate processes generated by (32) and (33) with $M = 2$. To obtain simulation samples with $M_0 = 2$, we may simply set $\alpha_1 = \alpha_2 = 1$ in (32). On the other hand, we set $\alpha_1 = 1$ and let $\alpha_2 = \alpha$, where α takes values from 0.80 to 0.95 with increment 0.05, in (32) and (33) to obtain simulation samples with $M_0 = 1$. Finally, for the simulation samples with $M_0 = 0$,

¹⁴The results are also entirely robust to the choice of maximum orders for the order selection criteria.

Table 6: Rejection Probabilities of τ_M^T in Empirical Model of Individual Earnings

		M				
M_0	T	1	2	3	4	5
2	100	0.0204	0.0664	0.7429	0.7146	0.4724
	200	0.0245	0.0490	0.9966	0.9995	0.9907
	300	0.0255	0.0551	1.0000	1.0000	1.0000

			α			
M	M_0	T	0.80	0.85	0.90	0.95
2	1	100	0.2724	0.1076	0.0348	0.0114
		300	1.0000	0.9998	0.9078	0.2378
		500	1.0000	1.0000	0.9998	0.7626
	0	100	0.5498	0.2358	0.0838	0.0166
		300	1.0000	1.0000	0.9924	0.4452
		500	1.0000	1.0000	1.0000	0.9540
1	0	100	0.8376	0.5498	0.2294	0.0416
		300	1.0000	1.0000	0.9988	0.6802
		500	1.0000	1.0000	1.0000	0.9930

we set $\alpha_1 = \alpha_2 = \alpha$ in (33) with α again taking values from 0.80 to 0.95 with increment 0.05.

In the upper panel, we set the model exactly as we find in our empirical analysis with $M_0 = 2$, and present the rejection probabilities of τ_M^T for various choices of M , $M = 1, \dots, 5$. Under our setting, we expect the null hypothesis (8) to be rejected for all $M \geq 3$. Overall, the finite sample powers of the test are quite good even for moderately large T . The powers of the test are almost 100% for all M as long as T is greater than 200. If T is 100, the test loses power rather dramatically as M increases. Therefore, if T is small, it does not appear to be practically meaningful to use the test for large values of M . The lack of power in the test for small T however quickly disappears as T gets large. On the other hand, the rejection probabilities are quite close to the nominal size 5% unless T is very small, in which case the test tends to under-reject the null hypothesis. In sum, our empirical finding for the existence of nonstationarity in the cross-sectional distributions of individual earnings seem to be well supported by our simulation results here.

In the lower panel, we further investigate the finite sample powers of our test against the models with roots in the vicinity of unity. As alternative models, we consider both cases with $M_0 = 1$ and $M_0 = 0$. Our simulation results are largely as expected. In all cases, the powers of the test decrease as α approaches to unity and it becomes harder to discriminate the null and alternative hypotheses. Moreover, the test becomes more powerful rather quickly as the sample size increases in every case we consider. This is true uniformly

Table 7: Rejection Probability of τ_M^T in Empirical Model of Stock Returns

		M				
M_0	T	1	2	3	4	5
1	100	0.0512	0.9696	0.6021	0.2725	0.0708
	200	0.0584	1.0000	1.0000	1.0000	0.9851

			α			
M	M_0	T	0.80	0.85	0.90	0.95
1	0	100	0.8682	0.6198	0.3008	0.0718
		300	0.9990	0.9992	0.9980	0.7582
		500	1.0000	1.0000	1.0000	0.9920

in α . However, it appears that the finite sample powers of the test are not large enough to effectively distinguish the near unit roots from the exact unit roots. In particular, when T is very small, the test has virtually no power against the near unit roots and rarely rejects the null hypothesis of unit roots, regardless of the true number M_0 of unit roots and the hypothesized number M of unit roots.

6.2 Empirical Model of Stock Returns

Now we use our second empirical model on the intra-month distributions of stock returns to evaluate the finite sample performance of our test τ_M^T for the null hypothesis (8) against the alternative hypothesis (9). The simulation results are tabulated in Table 7. As in the previous section, we use M_0 to denote the number of unit roots in our simulated samples (w_t), whereas M signifies the hypothesized number of unit roots for the test. Our simulation samples for the second empirical model are obtained from the coordinate processes generated by (32) and (33) with $M = 1$ as in the second empirical model. It is straightforward to obtain simulation samples with $M_0 = 1$, since we may simply set $\alpha_1 = 1$ in (32). To obtain simulation samples with $M_0 = 0$, on the other hand, we set $\alpha_1 = \alpha$, where α takes values from 0.80 to 0.95 with increment 0.05, in (33). This is completely analogous to our earlier setup for the first empirical model.

For the simulation results in the upper panel, we use the model we find in our empirical analysis with $M_0 = 1$ and compute the rejection probabilities of τ_M^T for various choices of M , $M = 1, \dots, 5$. Consequently, we expect the null hypothesis (8) to be rejected for all $M \geq 2$. The finite sample powers of the test are quite good and have almost perfect power even when T is only moderately large, i.e., $T = 200$. As in our simulation results for the first empirical model, the power of the test is poor and not satisfactory when T is small. However, the problem quickly disappears as T increases. The performance of the test is rather satisfactory also in terms of finite sample sizes. The sizes of the test are nearly exact even in very small samples. The actual rejection probabilities are indeed almost identical

to the nominal size for $T = 100$ as well as for bigger samples. This is in contrast with our earlier results for the first empirical model, where we observe a clear tendency for the test to under-reject when T is small.

As in the simulations for the first empirical model, we further examine the finite sample powers of the test against stationary models with roots in the neighborhood of unity. The overall aspects of our simulation results for the second empirical model are essentially identical to those of our previous results for the first empirical model. Again, the power of the test decreases as α approaches to unity, and the power loss is particularly severe if T is small. The finite sample powers, however, rapidly increase uniformly in α as the sample size increases. The performance of the test appears to be slightly better for the second empirical model compared with the first.

7. Conclusion

In this paper, we consider testing for nonstationarity for the time series of state distributions, which can be either cross-sectional or intra-period distributions of some underlying economic variable. The state densities are regarded as Hilbertian random variables, and we employ the functional principal component analysis to construct a statistic to test for unit roots in the time series of state densities. Our test is nuisance parameter free and its critical values are tabulated in the paper. Once we estimate the unit root subspace, we may compute the unit root proportions in the moments of state distributions. We apply our methodology to analyze nonstationarity in the time series of two different types of state distributions, i.e., the cross-sectional distributions of individual earnings and intra-month distributions of stock returns. In both cases, we could find some clear evidence for the presence of nonstationarity. The presence of nonstationarity in the time series of state distributions yields some important implications, both economic and statistical, which can certainly be further explored. This will be reported in our subsequent work.

Mathematical Appendix

Proof of Lemma 3.1 Define the stochastic process W_T on $[0, 1]$ by

$$W_T(r) = T^{-1/2} \sum_{t=1}^{[Tr]} H_N \Delta w_t,$$

which takes values on H_N . We will establish that

$$W_T \rightarrow_d W, \quad (34)$$

where W is Brownian motion on H_N with variance operator $\Pi_N \Phi(1) \Sigma \Phi(1)' \Pi_N$. To derive (34), it suffices to show that

$$\langle v, W_T \rangle \rightarrow_d \langle v, W \rangle \quad (35)$$

for $v \in H_N$ chosen arbitrarily.

For any $v \in H_N$, we have

$$\langle v, W_T(r) \rangle = T^{-1/2} \sum_{t=1}^{[Tr]} \langle v, H_N \Delta w_t \rangle = T^{-1/2} \sum_{t=1}^{[Tr]} \langle v, \Delta w_t \rangle. \quad (36)$$

It follows that

$$\langle v, \Delta w_t \rangle = \langle v, \Phi(1) \varepsilon_t \rangle + \langle v, \bar{u}_{t-1} - \bar{u}_t \rangle, \quad (37)$$

and therefore, for $r \in [0, 1]$, it follows that

$$T^{-1/2} \sum_{t=1}^{[Tr]} \langle v, \Delta w_t \rangle = T^{-1/2} \sum_{t=1}^{[Tr]} \langle v, \Phi(1) \varepsilon_t \rangle - T^{-1/2} \langle v, \bar{u}_{[Tr]} \rangle \quad (38)$$

ignoring \bar{u}_0 . However, we have

$$\begin{aligned} \mathbb{P} \left\{ \sup_{r \in [0,1]} T^{-1/2} |\langle v, \bar{u}_{[Tr]} \rangle| > K \right\} &= \mathbb{P} \left\{ \max_{1 \leq t \leq n} T^{-1/2} |\langle v, \bar{u}_t \rangle| > K \right\} \\ &\leq \sum_{t=1}^T \mathbb{P} \left\{ T^{-1/2} |\langle v, \bar{u}_t \rangle| > K \right\} \\ &= T \mathbb{P} \left\{ T^{-1/2} |\langle v, \bar{u}_t \rangle| > K \right\} \\ &\leq T^{1-p/2} (1/K^p) \mathbb{E} |\langle v, \bar{u}_t \rangle|^p \rightarrow 0 \end{aligned}$$

for any constant $K > 0$. Consequently, we may deduce from (38) that

$$T^{-1/2} \sum_{t=1}^{[Tr]} \langle v, \Delta w_t \rangle = T^{-1/2} \sum_{t=1}^{[Tr]} \langle v, \Phi(1) \varepsilon_t \rangle + o_p(1) \quad (39)$$

uniformly in $r \in [0, 1]$. Now (35) follows immediately from (36) and (39), as was to be shown to derive (34). Note that $(\langle v, \Phi(1)\varepsilon_t \rangle)$ is an i.i.d. sequence of random variables with variance $\langle v, \Phi(1)\Sigma\Phi(1)'v \rangle$.

To prove (2), we let $(v_1, v_2) \in H_N \times H_N$ be chosen arbitrarily. Note that

$$\left\langle v_1, \left(T^{-2} \sum_{t=1}^T w_t^N \otimes w_t^N \right) v_2 \right\rangle = T^{-2} \sum_{t=1}^T \langle v_1, w_t^N \rangle \langle v_2, w_t^N \rangle, \quad (40)$$

and that

$$\begin{aligned} T^{-2} \sum_{t=1}^T \langle v_1, w_t \rangle \langle v_2, w_t \rangle &= \int_0^1 \langle v_1, W_T(r) \rangle \langle v_2, W_T(r) \rangle dr + o_p(1) \\ &\rightarrow_d \int_0^1 \langle v_1, W(r) \rangle \langle v_2, W(r) \rangle dr \\ &= \left\langle v_1, \left(\int_0^1 W(r) \otimes W(r) dr \right) v_2 \right\rangle, \end{aligned} \quad (41)$$

jointly for any choice of $(v_1, v_2) \in H_N \times H_N$, due to (34) and the continuous mapping theorem. It follows from (40) and (41) that

$$\left\langle v_1, \left(T^{-2} \sum_{t=1}^T w_t^N \otimes w_t^N \right) v_2 \right\rangle \rightarrow_d \left\langle v_1, \left(\int_0^1 W(r) \otimes W(r) dr \right) v_2 \right\rangle,$$

jointly for any choice of $(v_1, v_2) \in H_N \times H_N$. This was to be shown.

Next, to deduce (3), we simply note that

$$Q_{NN}^T = T^{-1} \sum_{t=1}^T w_t^S \otimes w_t^S = \Pi_S \left(T^{-1} \sum_{t=1}^T \bar{u}_t \otimes \bar{u}_t \right) \Pi_S,$$

and that

$$T^{-1} \sum_{t=1}^T \bar{u}_t \otimes \bar{u}_t \rightarrow_p \mathbb{E} \bar{u}_t \otimes \bar{u}_t = \sum_{i=0}^{\infty} \bar{\Phi}_i \Sigma \bar{\Phi}_i'.$$

Finally, since we have for any $(v_1, v_2) \in H_N \times H_S$

$$\langle v_1, Q_{NS}^T v_2 \rangle = T^{-1} \sum_{t=1}^T \langle v_1, w_t^N \rangle \langle v_2, w_t^S \rangle = O_p(1)$$

from which (4) readily follows. This completes the proof. \square

Proof of Proposition 3.2 It can be easily deduced from (1) and Lemma 3.1 that

$$T^{-2} Q_T = Q_{NN}^T + O_p(T^{-1})$$

for all large T . Obviously, by construction, the M -leading eigenvectors of Q_{NN}^T associated with nonzero eigenvalues are obtained in the unit root subspace of H_N of H , and the stated result for Π_N^T follows immediately. The result for Π_S^T can be deduced immediately from the fact that $\Pi_S = 1 - \Pi_N$. The proof is therefore complete. \square

Proof of Theorem 3.3 Assume that the eigensubspaces (W_i) spanned by $v_i(Q_{NN})$ are one dimensional, and define $v_i(Q_T)' = \text{sgn}\langle v_i(Q_T), v_i(Q_{NN}) \rangle v_i(Q_{NN})$. Note that since both $(v_i(Q_{NN}))$ and $(-v_i(Q_{NN}))$ are eigenvectors corresponding to $(\lambda_i(Q_{NN}))$, the introduction of $(v_i(Q_T)')$ is necessary for the definitiveness of eigenvectors as explained earlier. In fact, our genuine interest of estimation is (W_i) , and this explains the introduction of $(v_i(Q_T)')$.

Then from Lemma 4.2 and 4.3 in Bosq (2000), we have

$$|T^{-2}\lambda_i(Q_T) - \lambda_i(Q_T)'| \leq \|T^{-2}Q_T - Q_{NN}\|, \text{ for } i = 1, \dots, M, \quad (42)$$

and

$$\|T^{-2}v_i(Q_T) - v_i(Q_T)'\| = \alpha_i \|T^{-2}Q_T - Q_{NN}\|, \text{ for } i = 1, \dots, M, \quad (43)$$

where

$$\alpha_i = \inf(\lambda_{i-1}(Q_{NN}) - \lambda_i, \lambda_i - \lambda_{i-1}), \quad i \geq 2, \text{ and } \alpha_1 = \lambda_1 - \lambda_2,$$

since both $T^{-2}Q_T$ and Q_{NN} are linear compact operators.

For our asymptotics in the unit root subspace H_N , we only consider distributional convergences. Therefore, we may identify the random vectors and operators on H_N only up to their distributions. Then we may invoke the well known Skorokhod representation theorem in, e.g., Pollard (1984, Theorem IV.13), and assume that $Q_{NN}^T \rightarrow_{a.s.} Q_{NN}$. Obviously, the infinite dimensionality of H does not give any complications, since the unit root subspace H_N , on which Q_{NN}^T and Q_{NN} are defined, is finite dimensional. Clearly, we have

$$\lambda_i(Q_{NN}) = O_p(1),$$

and therefore, it follows from Bosq (2000, Lemma 4.2) and the proof of Lemma 3.1 that

$$\begin{aligned} \|\lambda_i(Q_T) - \lambda_i(Q_{NN})\| &\leq \|T^{-2}Q_T - Q_{NN}\| \\ &\leq (\|T^{-2}Q_T - Q_{NN}^T\| + \|Q_{NN}^T - Q_{NN}\|) \\ &= O_p(T^{-1}) + O_p(T^{1-p/2}) \end{aligned}$$

and

$$\begin{aligned} \|v_i(Q_T) - v_i(Q_{NN})\| &= O_p(1) \|T^{-2}Q_T - Q_{NN}\| \\ &\leq O_p(1) (\|T^{-2}Q_T - Q_{NN}^T\| + \|Q_{NN}^T - Q_{NN}\|) \\ &= O_p(T^{-1}) + O_p(T^{1-p/2}) \end{aligned}$$

for $i = 1, \dots, M$. Consequently, we have

$$(T^{-2}\lambda_i(Q_T), v_i(Q_T)) \rightarrow_{a.s.} (\lambda_i(Q_{NN}), v_i(Q_{NN}))$$

for $i = 1, \dots, M$, since both $T^{-2}Q_T$ and Q_{NN} are bounded linear operators in Hilbert space H , which implies that

$$(T^{-2}\lambda_i(Q_T), v_i(Q_T)) \rightarrow_d (\lambda_i(Q_{NN}), v_i(Q_{NN}))$$

jointly for $i = 1, \dots, M$, as was to be shown.

For the second part, we write

$$\Pi_S^T Q_T \Pi_S^T = T^2 \Pi_S^T Q_{NN}^T \Pi_S^T + T \Pi_S^T Q_{NS}^T \Pi_S^T + T \Pi_S^T Q_{SN}^T \Pi_S^T + T \Pi_S^T Q_{SS}^T \Pi_S^T, \quad (44)$$

where $Q_{NN}^T, Q_{NS}^T, Q_{SN}^T$ and Q_{SS}^T are defined as in (1), and note that

$$\Pi_S^T \Pi_N = \Pi_S \Pi_N + (\Pi_S^T - \Pi_S) \Pi_N = O_p(T^{-1}) \quad (45)$$

and

$$\Pi_S^T \Pi_S = \Pi_S \Pi_S + (\Pi_S^T - \Pi_S) \Pi_S = \Pi_S + O_p(T^{-1}) \quad (46)$$

due to Lemma 3.1. Clearly, we have $\Pi_S \Pi_N = 0$ and $\Pi_S \Pi_S = \Pi_S$.

We may easily deduce from (45) that

$$\Pi_S^T Q_{NN}^T \Pi_S^T = \Pi_S^T \Pi_N \left(\frac{1}{T^2} \sum_{t=1}^T w_t \otimes w_t \right) \Pi_N \Pi_S^T = O_p(T^{-2}) \quad (47)$$

since

$$\frac{1}{T^2} \sum_{t=1}^T w_t \otimes w_t = O_p(1).$$

Moreover, it follows from (45) and (46) that

$$\Pi_S^T Q_{SN}^T \Pi_S^T = \Pi_S^T \left(\frac{1}{T} \sum_{t=1}^T w_t^S \otimes w_t \right) \Pi_N \Pi_S^T = O_p(T^{-1}), \quad (48)$$

since

$$\frac{1}{T} \sum_{t=1}^T w_t^S \otimes w_t = O_p(1).$$

Similarly, we have $\Pi_S^T Q_{NS}^T \Pi_S^T = O_p(T^{-1})$. Finally, it can be deduced that

$$\Pi_S^T Q_{SS}^T \Pi_S^T = \Pi_S^T \left(\frac{1}{T} \sum_{t=1}^T w_t^S \otimes w_t^S \right) \Pi_S^T = \frac{1}{T} \sum_{t=1}^T w_t^S \otimes w_t^S + O_p(T^{-1}) \quad (49)$$

due to (46).

Now we have from (44), (47), (48) and (49) that

$$T^{-1} \Pi_S^T Q_T \Pi_S^T = \Pi_S^T Q_{SS}^T \Pi_S^T + O_p(T^{-1}) = \frac{1}{T} \sum_{t=1}^T w_t^S \otimes w_t^S + O_p(T^{-1}).$$

The eigenvectors $(v_{M+i}(Q_T))$, $i = 1, 2, \dots$, are the eigenvectors of $\Pi_S^T Q_T \Pi_S^T$ associated with nonzero eigenvalues and

$$\frac{1}{T} \sum_{t=1}^T w_t^S \otimes w_t^S = Q_{SS} + O_p(T^{-1/2})$$

for all large T . Since Q_{SS} is also a linear compact operator, we similarly have

$$|T^{-1}\lambda_i(Q_T) - \lambda_i(Q_{SS})| \leq \|T^{-1}\Pi_S^T Q_T \Pi_S^T - Q_{SS}\|, \text{ for } i = M + 1 \dots,$$

and

$$\|v_i(Q_T) - v_i(Q_T)'\| = \alpha_i \|T^{-1}\Pi_S^T Q_T \Pi_S^T - Q_{SS}\|, \text{ for } i = M + 1 \dots,$$

where

$$\alpha_i = \inf(\lambda_{i-1} - \lambda_i, \lambda_i - \lambda_{i-1}), \quad i = M + 1 \dots$$

The proof for the stationary directions is therefore complete. \square

Proof of Corollary 3.4 The first part follows immediately from

$$\begin{aligned} |\langle \Pi_N^T v, w_t \rangle - \langle \Pi_N v, w_t \rangle| &= |\langle (\Pi_N^T - \Pi_N)v, w_t \rangle| \\ &\leq \|(\Pi_N^T - \Pi_N)v\| \|w_t\| \\ &\leq \|(\Pi_N^T - \Pi_N)\| \left(\max_{1 \leq t \leq T} \|w_t\| \right) \\ &= O_p(T^{-1})O_p(T^{1/2}). \end{aligned}$$

Similarly, the second part can be deduced from

$$\begin{aligned} |\langle \Pi_N^T v, \Delta w_t \rangle - \langle \Pi_N v, \Delta w_t \rangle| &= |\langle (\Pi_N^T - \Pi_N)v, \Delta w_t \rangle| \\ &\leq \|(\Pi_N^T - \Pi_N)v\| \|\Delta w_t\| \\ &\leq \|(\Pi_N^T - \Pi_N)\| \left(\max_{1 \leq t \leq T} \|\Delta w_t\| \right) \\ &= O_p(T^{-1})O_p(T^{1/p}). \end{aligned}$$

upon noticing that

$$\max_{1 \leq t \leq T} \|\Delta w_t\| = O_p(T^{1/p}).$$

The proof is therefore complete. \square

Proof of Theorem 3.5 As noted, we may let

$$z_t = (\langle \Pi_N v_1(Q_T), w_t \rangle, \dots, \langle \Pi_N v_M(Q_T), w_t \rangle)'$$

without loss of generality. Therefore, it follows immediately from Corollary 3.4 that

$$\max_{1 \leq t \leq T} \|\tilde{z}_t - z_t\| = O_p(T^{-1/2}) \quad (50)$$

$$\max_{1 \leq t \leq T} \|\Delta \tilde{z}_t - \Delta z_t\| = O_p(T^{-1+1/p}) \quad (51)$$

We may easily deduce from (50) that

$$\begin{aligned} \left\| \sum_{t=1}^T \tilde{z}_t \tilde{z}'_t - \sum_{t=1}^T z_t z'_t \right\| &\leq 2 \left(\max_{1 \leq t \leq T} \|\tilde{z}_t - z_t\| \right) \sum_{t=1}^T \|z_t\| + T \left(\max_{1 \leq t \leq T} \|\tilde{z}_t - z_t\| \right)^2 \\ &= O_p(T^{-1/2}) O_p(T^{3/2}) + T O_p(T^{-1}) = O_p(T), \end{aligned}$$

which implies that

$$\tilde{Q}_M^T = Q_M^T + O_p(T) \quad (52)$$

for all large T .

Moreover, we have from (51) that

$$\begin{aligned} \left| \tilde{\Gamma}_T(i) - \Gamma_T(i) \right| &\leq \left(\max_{1 \leq t \leq T} \|\Delta \tilde{z}_t - \Delta z_t\| \right) \frac{1}{T} \sum_{t=1}^T \|\Delta z_t\| + \left(\max_{1 \leq t \leq T} \|\Delta \tilde{z}_{t-i} - \Delta z_{t-i}\| \right)^2 \\ &= O_p(T^{-1+1/p}) O_p(1) + O_p(T^{-2+2/p}) = O_p(T^{-1+1/p}), \end{aligned}$$

and therefore,

$$\begin{aligned} \left| \tilde{\Omega}_M^T - \Omega_M^T \right| &\leq \sum_{|i| \leq \ell} |\varpi_\ell(i)| \left| \tilde{\Gamma}_T(i) - \Gamma_T(i) \right| \\ &= O_p(\ell) O_p(T^{-1+1/p}) = O_p(\ell T^{-1+1/p}) = o_p(1). \end{aligned} \quad (53)$$

Now it can be easily deduced from (52) and (53) that

$$\lambda_i(\tilde{Q}_M^T, \tilde{\Omega}_M^T) = \lambda_i(Q_M^T, \Omega_M^T) + o_p(1)$$

from which the first part follows immediately.

To establish the second part, we may simply consider the asymptotic behavior of $\lambda_M(Q_M^T, \Omega_M^T)$. Note that the asymptotic behavior of the newly defined statistic τ_M^T is different from that of σ_M^T also under the alternative hypothesis (9). Momentarily, we let $M = 0$ and $\Gamma(i) = 0$ for all $|i| > \ell$. In this simple case, we have $\Omega_M = 0$ and

$$\Omega_M^{T^{-1}} = O_p(T^{1/2})$$

with the choice of $\varpi_\ell(i) \equiv 1$ for all $|i| \leq \ell$. The order of $\Omega_M^{T^{-1}}$ is in general smaller than $O_p(T^{1/2})$ if $\Gamma(i) \neq 0$ for infinitely many i 's and we have to increase ℓ as $T \rightarrow \infty$ with an appropriate choice of ϖ_ℓ . Under the alternative hypothesis (9), Ω_M becomes singular and we may now easily see

$$\lambda_M(Q_M^T, \Omega_M^T) = O_p(T^{3/2}),$$

which implies that $\tau_M^T = O_p(T^{-1/2})$. This was to be shown. \square

Proof of Lemma 4.1 Note that

$$\begin{aligned}
\hat{w}_t &= \hat{f}_t - T^{-1} \sum_{t=1}^T \hat{f}_t \\
&= \left(f_t - T^{-1} \sum_{t=1}^T f_t \right) + (\hat{f}_t - f_t) - T^{-1} \sum_{t=1}^T (\hat{f}_t - f_t) \\
&= \left(w_t - T^{-1} \sum_{t=1}^T w_t \right) + \left(\Delta_t - T^{-1} \sum_{t=1}^T \Delta_t \right) \\
&= \underline{w}_t + \left(\Delta_t - T^{-1} \sum_{t=1}^T \Delta_t \right),
\end{aligned}$$

where

$$\underline{w}_t = w_t - \frac{1}{T} \sum_{t=1}^T w_t.$$

Define

$$\underline{Q}_{NN}^T = \frac{1}{T^2} \Pi_N \left(\sum_{t=1}^T \underline{w}_t \otimes \underline{w}_t \right) \Pi_N, \quad (54)$$

and let $(v_1, v_2) \in H_N \times H_N$ be chosen arbitrarily. We have

$$\begin{aligned}
\langle v_1, \underline{Q}_{NN}^T v_2 \rangle &= T^{-2} \sum_{t=1}^T \langle v_1, \underline{w}_t \rangle \langle v_2, \underline{w}_t \rangle \\
&= T^{-2} \sum_{t=1}^T \langle v_1, w_t \rangle \langle v_2, w_t \rangle - \left\langle v_1, T^{-3/2} \sum_{t=1}^T w_t \right\rangle \left\langle v_2, T^{-3/2} \sum_{t=1}^T w_t \right\rangle \\
&\rightarrow_d \int_0^1 \langle v_1, W(r) \rangle \langle v_2, W(r) \rangle dr - \left\langle v_1, \int_0^1 W(r) dr \right\rangle \left\langle v_2, \int_0^1 W(r) dr \right\rangle \\
&= \int_0^1 \langle v_1, \underline{W}(r) \rangle \langle v_2, \underline{W}(r) \rangle dr \\
&= \langle v_1, \underline{Q}_{NN} v_2 \rangle
\end{aligned} \quad (55)$$

similarly as shown in the proof of Lemma 3.1. Obviously, (55) holds jointly for arbitrary $(v_1, v_2) \in H_N \times H_N$, and therefore, we have

$$\underline{Q}_{NN}^T \rightarrow_d \underline{Q}_{NN}, \quad (56)$$

where \underline{Q}_{NN}^T is defined in (54).

Now we define

$$\underline{\Delta}_t = \Delta_t - \frac{1}{T} \sum_{t=1}^T \Delta_t,$$

and write

$$\begin{aligned}\hat{Q}_{NN}^T - \underline{Q}_{NN}^T &= \frac{1}{T^2} \sum_{t=1}^T \hat{w}_t^N \otimes \hat{w}_t^N - \frac{1}{T^2} \sum_{t=1}^T \underline{w}_t^N \otimes \underline{w}_t^N \\ &= \Pi_N(D_1 + D_2 + D_3)\Pi_N,\end{aligned}\tag{57}$$

where $\underline{w}_t^N = \Pi_N \underline{w}_t$, and

$$\begin{aligned}D_1 &= \frac{1}{T^2} \sum_{t=1}^T \underline{\Delta}_t \otimes \underline{\Delta}_t, \\ D_2 &= -\frac{1}{T^2} \sum_{t=1}^T \underline{\Delta}_t \otimes \underline{w}_t, \\ D_3 &= -\frac{1}{T^2} \sum_{t=1}^T \underline{w}_t \otimes \underline{\Delta}_t.\end{aligned}$$

Once again, we let $(v_1, v_2) \in H_N \times H_N$ be chosen arbitrarily.

For D_1 , we have

$$\begin{aligned}\langle v_1, D_1 v_2 \rangle &= \frac{1}{T} \left\langle v_1, \left(T^{-1} \sum_{t=1}^T \underline{\Delta}_t \otimes \underline{\Delta}_t \right) v_2 \right\rangle \\ &= \frac{1}{T} \left\langle v_1, \left(T^{-1} \sum_{t=1}^T \underline{\Delta}_t \otimes \underline{\Delta}_t - T^{-1} \sum_{t=1}^T \underline{\Delta}_t \otimes T^{-1} \sum_{t=1}^T \underline{\Delta}_t \right) v_2 \right\rangle \\ &= \frac{1}{T^2} \sum_{t=1}^T \langle v_1, \underline{\Delta}_t \rangle \langle v_2, \underline{\Delta}_t \rangle - \frac{1}{T} \left(\frac{1}{T} \sum_{t=1}^T \langle v_1, \underline{\Delta}_t \rangle \right) \left(\frac{1}{T} \sum_{t=1}^T \langle v_2, \underline{\Delta}_t \rangle \right).\end{aligned}$$

However,

$$\left| T^{-2} \sum_{t=1}^T \langle v_1, \underline{\Delta}_t \rangle \langle v_2, \underline{\Delta}_t \rangle \right| \leq \frac{1}{T} \left(T^{-1} \sum_{t=1}^T \langle v_1, \underline{\Delta}_t \rangle^2 \right)^{1/2} \left(T^{-1} \sum_{t=1}^T \langle v_2, \underline{\Delta}_t \rangle^2 \right)^{1/2},$$

and, due to Assumption 4.1, we have

$$\frac{1}{T} \sum_{t=1}^T \langle v_i, \underline{\Delta}_t \rangle^2 \leq \frac{1}{T} \sum_{t=1}^T \|\underline{\Delta}_t\|^2 = o_p(1)$$

for $i = 1, 2$. Moreover, we have

$$\left| \frac{1}{T} \sum_{t=1}^T \langle v_i, \underline{\Delta}_t \rangle \right| \leq \frac{1}{T} \sum_{t=1}^T |\langle v_i, \underline{\Delta}_t \rangle| \leq \frac{1}{T} \sum_{t=1}^T \|\underline{\Delta}_t\| = o_p(1)$$

for $i = 1, 2$ by Assumption 4.1. Consequently, we have

$$\langle v_1, D_1 v_2 \rangle = o_p(T^{-1}) \quad (58)$$

under Assumption 4.1.

For D_2 , we have

$$\begin{aligned} \langle v_1, D_2 v_2 \rangle &= - \left\langle v_1, \left(T^{-2} \sum_{t=1}^T \underline{\Delta}_t \otimes \underline{w}_t \right) v_2 \right\rangle \\ &= - \frac{1}{T^2} \sum_{t=1}^T \langle v_1, \underline{\Delta}_t \rangle \langle v_2, \underline{w}_t \rangle \\ &= - \frac{1}{T^2} \sum_{t=1}^T \langle v_1, \underline{\Delta}_t \rangle \langle v_2, \underline{w}_t \rangle + \frac{1}{T^{1/2}} \left(\frac{1}{T} \sum_{t=1}^T \langle v_1, \underline{\Delta}_t \rangle \right) \left(\frac{1}{T^{3/2}} \sum_{t=1}^T \langle v_2, \underline{w}_t \rangle \right). \end{aligned}$$

However, we have

$$\frac{1}{T^{3/2}} \sum_{t=1}^T \langle v_2, \underline{w}_t \rangle = O_p(1), \quad \frac{1}{T^2} \sum_{t=1}^T \langle v_2, \underline{w}_t \rangle^2 = O_p(1),$$

and therefore it follows that

$$\left| \frac{1}{T^2} \sum_{t=1}^T \langle v_1, \underline{\Delta}_t \rangle \langle v_2, \underline{w}_t \rangle \right| \leq \frac{1}{T^{1/2}} \left(\frac{1}{T} \sum_{t=1}^T \langle v_1, \underline{\Delta}_t \rangle^2 \right)^{1/2} \left(\frac{1}{T^2} \sum_{t=1}^T \langle v_2, \underline{w}_t \rangle^2 \right)^{1/2} = o_p(T^{-1/2}).$$

and

$$\frac{1}{T^{1/2}} \left(\frac{1}{T} \sum_{t=1}^T \langle v_1, \underline{\Delta}_t \rangle \right) \left(\frac{1}{T^{3/2}} \sum_{t=1}^T \langle v_2, \underline{w}_t \rangle \right) = o_p(T^{-1/2})$$

under Assumption 4.1. Consequently, it follows that

$$\langle v_1, D_2 v_2 \rangle = o_p(T^{-1/2}), \quad (59)$$

and we may also show that

$$\langle v_1, D_3 v_2 \rangle = o_p(T^{-1/2}) \quad (60)$$

similarly. Now it follows from (57), (58), (59) and (60) that

$$\hat{Q}_{NN}^T = \underline{Q}_{NN}^T + o_p(1),$$

from which and (56) the first part follows immediately.

To establish the second part, we show that

$$\hat{Q}_{SS}^T = Q_{SS}^T + o_p(1). \quad (61)$$

Note that

$$\begin{aligned} \hat{Q}_{SS}^T - Q_{SS}^T &= \left(\frac{1}{T} \sum_{t=1}^T \hat{w}_t^S \otimes \hat{w}_t^S - \frac{1}{T} \sum_{t=1}^T \underline{w}_t^S \otimes \underline{w}_t^S \right) \\ &\quad + \left(\frac{1}{T} \sum_{t=1}^T \underline{w}_t^S \otimes \underline{w}_t^S - \frac{1}{T} \sum_{t=1}^T w_t^S \otimes w_t^S \right), \end{aligned}$$

where $\underline{w}_t^S = \Pi_S w_t$. It is straightforward to show that

$$\frac{1}{T} \sum_{t=1}^T \underline{w}_t^S \otimes \underline{w}_t^S = \frac{1}{T} \sum_{t=1}^T w_t^S \otimes w_t^S + o_p(1).$$

To proceed, we write

$$\frac{1}{T} \sum_{t=1}^T \hat{w}_t^S \otimes \hat{w}_t^S - \frac{1}{T} \sum_{t=1}^T w_t^S \otimes w_t^S = \Pi_S (D_1 + D_2 + D_3) \Pi_S,$$

where we redefine

$$\begin{aligned} D_1 &= \frac{1}{T} \sum_{t=1}^T \Delta_t \otimes \Delta_t, \\ D_2 &= -\frac{1}{T} \sum_{t=1}^T \Delta_t \otimes \underline{w}_t, \\ D_3 &= -\frac{1}{T} \sum_{t=1}^T \underline{w}_t \otimes \Delta_t. \end{aligned}$$

Choose $(v_1, v_2) \in H_S \times H_S$ arbitrarily.

For D_1 , it follows that

$$\langle v_1, D_1 v_2 \rangle = \frac{1}{T} \sum_{t=1}^T \langle v_1, \Delta_t \rangle \langle v_2, \Delta_t \rangle - \left(\frac{1}{T} \sum_{t=1}^T \langle v_1, \Delta_t \rangle \right) \left(\frac{1}{T} \sum_{t=1}^T \langle v_2, \Delta_t \rangle \right).$$

However, we have in particular

$$\left| T^{-1} \sum_{t=1}^T \langle v_1, \Delta_t \rangle \langle v_2, \Delta_t \rangle \right| \leq \left(T^{-1} \sum_{t=1}^T \langle v_1, \Delta_t \rangle^2 \right)^{1/2} \left(T^{-1} \sum_{t=1}^T \langle v_2, \Delta_t \rangle^2 \right)^{1/2},$$

and we may easily show that $\langle v_1, D_1 v_2 \rangle = o_p(1)$ under Assumption 4.1. For D_2 , we have

$$\langle v_1, D_2 v_2 \rangle = -\frac{1}{T} \sum_{t=1}^T \langle v_1, \Delta_t \rangle \langle v_2, \underline{w}_t \rangle + \left(\frac{1}{T} \sum_{t=1}^T \langle v_1, \Delta_t \rangle \right) \left(\frac{1}{T} \sum_{t=1}^T \langle v_2, \underline{w}_t \rangle \right),$$

from which it follows immediately that $\langle v_1, D_2 v_2 \rangle = o_p(1)$. Therefore, we may readily establish (61) and the second part is easily deduced from Lemma 3.1. The rest of the proof is straightforward, and therefore, the details are omitted. \square

Proof of Theorem 4.2 Note that

$$T^{-2}\hat{Q}_T = \hat{Q}_{NN}^T + O_p(T^{-1})$$

from Lemma 4.1, and then by the same argument of the proof proposition 3.2, we have

$$\hat{\Pi}_N^T = \Pi_N + O_p(T^{-1}) \quad \text{and} \quad \hat{\Pi}_S^T = \Pi_S + O_p(T^{-1}) \quad (62)$$

for all large T . Now, note that (42) and (43) continue to hold for \hat{Q}_T and \underline{Q}_{NN} , and therefore the first part of Lemma can be easily deduced by Lemma 4.1.

The second part of proof is also very similar to the one in Theorem 3.3. We first write

$$\hat{\Pi}_S^T \hat{Q}_T \hat{\Pi}_S^T = T^2 \hat{\Pi}_S^T \hat{Q}_{NN}^T \hat{\Pi}_S^T + T \hat{\Pi}_S^T \hat{Q}_{NS}^T \hat{\Pi}_S^T + T \hat{\Pi}_S^T \hat{Q}_{SN}^T \hat{\Pi}_S^T + T \hat{\Pi}_S^T \hat{Q}_{SS}^T \hat{\Pi}_S^T,$$

where $\hat{Q}_{NN}^T, \hat{Q}_{NS}^T, \hat{Q}_{SN}^T$ and \hat{Q}_{SS}^T are defined as in (25). By (62), we have

$$T^{-1} \hat{\Pi}_S^T \hat{Q}_T \hat{\Pi}_S^T = \frac{1}{T} \sum_{t=1}^T \hat{w}_t^S \otimes \hat{w}_t^S + O_p(T^{-1}),$$

following the line of proof in Theorem 3.3. Then, $(v_{M+i}(\hat{Q}_T))$, $i = 1, 2, \dots$, are the eigenvectors of $\hat{\Pi}_S^T \hat{Q}_T \hat{\Pi}_S^T$ and Q_{SS} for large T since

$$\frac{1}{T} \sum_{t=1}^T \hat{w}_t^S \otimes \hat{w}_t^S = Q_{SS} + O_p(T^{-1/2}).$$

The proof is therefore complete. \square

Proof of Theorem 4.3 Let \underline{Q}_M^T be defined from (\underline{z}_t) , where

$$\underline{z}_t = (\langle v_1(Q_T), \underline{w}_t \rangle, \dots, \langle v_M(Q_T), \underline{w}_t \rangle)',$$

analogously as \hat{Q}_M^T in (27) defined from (\hat{z}_t) in (26), where (\underline{w}_t) is introduced in the proof of Lemma 4.1. We need to show that

$$\hat{Q}_M^T = \underline{Q}_M^T + o_p(T^{3/2}). \quad (63)$$

To show (63), we note that for $i = 1, \dots, M$

$$\begin{aligned} \left| \langle v_i(\hat{Q}_T), \hat{w}_t \rangle - \langle v_i(Q_T), \underline{w}_t \rangle \right| &\leq \left| \langle v_i(\hat{Q}_T), \hat{w}_t \rangle - \langle v_i(Q_T), \hat{w}_t \rangle \right| \\ &\quad + \left| \langle v_i(Q_T), \hat{w}_t \rangle - \langle v_i(Q_T), \underline{w}_t \rangle \right|, \end{aligned} \quad (64)$$

each term of which will be considered in sequel below.

Consider the first term in (64). For any $v \in H$, we have

$$\begin{aligned} \left| \langle \hat{\Pi}_N^T v, \hat{w}_t \rangle - \langle \Pi_N^T v, \hat{w}_t \rangle \right| &= \left| \langle (\hat{\Pi}_N^T - \Pi_N^T) v, \hat{w}_t \rangle \right| \\ &\leq \left\| (\hat{\Pi}_N^T - \Pi_N^T) v \right\| \|\hat{w}_t\| \\ &\leq \left\| \hat{\Pi}_N^T - \Pi_N^T \right\| \left(\max_{1 \leq t \leq T} \|\hat{w}_t\| \right) \\ &\leq \left(\left\| \hat{\Pi}_N^T - \Pi_N \right\| + \left\| \Pi_N^T - \Pi_N \right\| \right) \left(\max_{1 \leq t \leq T} \|\hat{w}_t\| \right). \end{aligned}$$

Note that

$$\|\hat{w}_t\| \leq \|\underline{w}_t\| + \|\Delta_t\| + \left\| \frac{1}{T} \sum_{t=1}^T \Delta_t \right\|,$$

from which we may deduce that

$$\max_{1 \leq t \leq T} \|\hat{w}_t\| \leq \max_{1 \leq t \leq T} \|\underline{w}_t\| + O_p(1) = O_p(T^{1/2}).$$

Therefore, we have

$$\max_{1 \leq t \leq T} \left| \langle \hat{\Pi}_N^T v, \hat{w}_t \rangle - \langle \Pi_N^T v, \hat{w}_t \rangle \right| = O_p(T^{-1}) O_p(T^{1/2}) = O_p(T^{-1/2}) \quad (65)$$

from Corollary 3.4, (62) and Assumption 4.1. For the second term in (64), we note that

$$\begin{aligned} \left| \langle v_i(Q_T), \hat{w}_t \rangle - \langle v_i(Q_T), \underline{w}_t \rangle \right| &\leq \left| \langle v_i(Q_T), \hat{w}_t - \underline{w}_t \rangle \right| \\ &\leq \|\hat{w}_t - \underline{w}_t\| \leq \|\Delta_t\| + \left\| \frac{1}{T} \sum_{t=1}^T \Delta_t \right\| \end{aligned} \quad (66)$$

for $i = 1, \dots, M$. Consequently, it follows from (65) and (66) that

$$\left| \langle v_i(\hat{Q}_T), \hat{w}_t \rangle - \langle v_i(Q_T), \underline{w}_t \rangle \right| \leq O_p(T^{-1/2}) + \|\Delta_t\| + o_p(1) \quad (67)$$

for $i = 1, \dots, M$, uniformly in $t = 1, \dots, T$.

Now we may deduce from (67) that for all $i, j = 1, \dots, M$

$$\begin{aligned} &\left| \sum_{t=1}^T \langle v_i(\hat{Q}_T), \hat{w}_t \rangle \langle v_j(\hat{Q}_T), \hat{w}_t \rangle - \sum_{t=1}^T \langle v_i(Q_T), \underline{w}_t \rangle \langle v_j(Q_T), \underline{w}_t \rangle \right| \\ &\leq \left(\max_{1 \leq t \leq T} \|\hat{w}_t\| \right) \sum_{t=1}^T \left| \langle v_i(\hat{Q}_T), \hat{w}_t \rangle - \langle v_i(Q_T), \underline{w}_t \rangle \right| \\ &\quad + \left(\max_{1 \leq t \leq T} \|\underline{w}_t\| \right) \sum_{t=1}^T \left| \langle v_j(\hat{Q}_T), \hat{w}_t \rangle - \langle v_j(Q_T), \underline{w}_t \rangle \right| \\ &= O_p(T^{1/2}) \left(O_p(T^{1/2}) + o_p(T) \right) = o_p(T^{3/2}), \end{aligned}$$

from which (63) follows immediately. Similarly as above, we may also readily show that

$$\hat{\Omega}_M^T = \Omega_M^T + o_p(1). \quad (68)$$

In particular, note that

$$\|\Delta \hat{w}_t\| \leq \|\Delta w_t\| + \|\Delta_t\| + \|\Delta_{t-1}\|,$$

and

$$\max_{1 \leq t \leq T} \|\Delta \hat{w}_t\| \leq \max_{1 \leq t \leq T} \|\Delta w_t\| + O_p(1) = O_p(T^{1/p}) + O_p(1).$$

Therefore, for any $v \in H$,

$$\begin{aligned} |\langle \Pi_N^T v, \Delta \hat{w}_t \rangle - \langle \Pi_N v, \Delta \hat{w}_t \rangle| &\leq \|(\Pi_N^T - \Pi_N)\| \left(\max_{1 \leq t \leq T} \|\Delta \hat{w}_t\| \right) \\ &= O_p(T^{-1}) O_p(T^{1/p}), \end{aligned} \quad (69)$$

from the line of proof of Corollary 3.4.

Now, following the line in (64) and (69), we have

$$\begin{aligned} \left| \langle v_i(\hat{Q}_T), \Delta \hat{w}_t \rangle - \langle v_i(Q_T), \Delta \hat{w}_t \rangle \right| &\leq \left| \langle v_i(\hat{Q}_T), \Delta \hat{w}_t \rangle - \langle v_i(Q_T), \Delta \hat{w}_t \rangle \right| \\ &\quad + \left| \langle v_i(Q_T), \Delta \hat{w}_t \rangle - \langle v_i(Q_T), \Delta \underline{w}_t \rangle \right|, \\ &\leq O_p(T^{-1+1/p}) + \|\Delta_t\| + \|\Delta_{t-1}\| \end{aligned}$$

for $i = 1, \dots, M$, uniformly in $t = 1, \dots, T$, which implies that

$$\max_{1 \leq t \leq T} \|\Delta \hat{z}_t - \Delta \underline{z}_t\| = O_p(T^{-1+1/p}). \quad (70)$$

Following the proof of Theorem 3.5 along with (70), we establish (68). Finally, it follows from (63) and (68) that

$$\lambda_i(\hat{Q}_M^T, \hat{\Omega}_M^T) = \lambda_i(\tilde{Q}_M^T, \tilde{\Omega}_M^T) + o_p(1)$$

for $i = 1, \dots, M$. The proof of the second part is similar and omitted here. \square

References

- ANDREWS, D. (1991): ‘‘Heteroskedasticity and Autocorrelation Consistent Matrix Estimation,’’ *Econometrica*, 59, 817–858.
- AUTOR, D., L. KATZ, AND M. KEARNEY (2008): ‘‘Trends in U.S. Wage Inequality: Revising the Revisionists,’’ *Review of Economics and Statistics*, 90, 300–323.
- BARTH, E., A. BRYSON, J. DAVIS, AND R. FREEMAN (2010): ‘‘The Contribution of Dispersion Across Plants to the Increase in US Earnings Dispersion,’’ Working paper, London School of Economics.

- BOSQ, D. (1998): *Nonparametric Statistics for Stochastic Processes, Lecture Notes in Statistics 110*. Springer, New York, 2nd edn.
- (2000): *Linear Processes in Function Spaces, Lecture Notes in Statistics 149*. Springer, New York.
- CHENG, X., AND P. PHILLIPS (2009): “Semiparametric Cointegrating Rank Selection,” *Econometrics Journal*, 12, S83–S104.
- DYNAN, K., D. ELMENDORF, AND D. SICHEL (2008): “The Evolution of Household Income Volatility,” Working paper, Federal Reserve Board.
- HANSEN, B. (2008): “Uniform Convergence Rates for Kernel Estimation with Dependent Data,” *Econometric Theory*, 24, 726–748.
- HONDA, T. (2009): “Nonparametric Density Estimation for Linear Processes with Infinite Variance,” *Annals of the Institute of Statistical Mathematics*, 61, 413–439.
- JOHANSEN, S. (1988): “Statistical Analysis of Cointegration Vectors,” *Journal of Economic Dynamics and Control*, 12, 231–254.
- LEMIEUX, T. (2006): “Increased Residual Wage Inequality: Composition Effects, Noisy Data, or Rising Demand for Skill,” *American Economic Review*, 96, 461–498.
- LIU, L. (2011): “On Hourly Wages and Weekly Earnings in the Current Population Survey,” *Economics Letters*, 105, 113–116.
- PARK, J., AND J. QIAN (2010): “Functional Regression of Continuous State Distributions,” Working paper, Indiana University.
- PHILLIPS, P., AND V. SOLO (1992): “Asymptotics for Linear Processes,” *Annals of Statistics*, 20, 971–1001.
- SHIN, D., AND G. SOLON (2011): “Trends in Men’s Earnings Volatility: What Does the Panel Study of Income Dynamics Show?,” *Journal of Public Economics*, 95, 973–982.
- STOCK, J. (1994): “Unit Roots, Structural Breaks and Trends,” in *Handbook of Econometrics*, ed. by R. F. Engle, and D. L. McFadden, vol. 4, chap. 46, pp. 2740–2841. Elsevier.